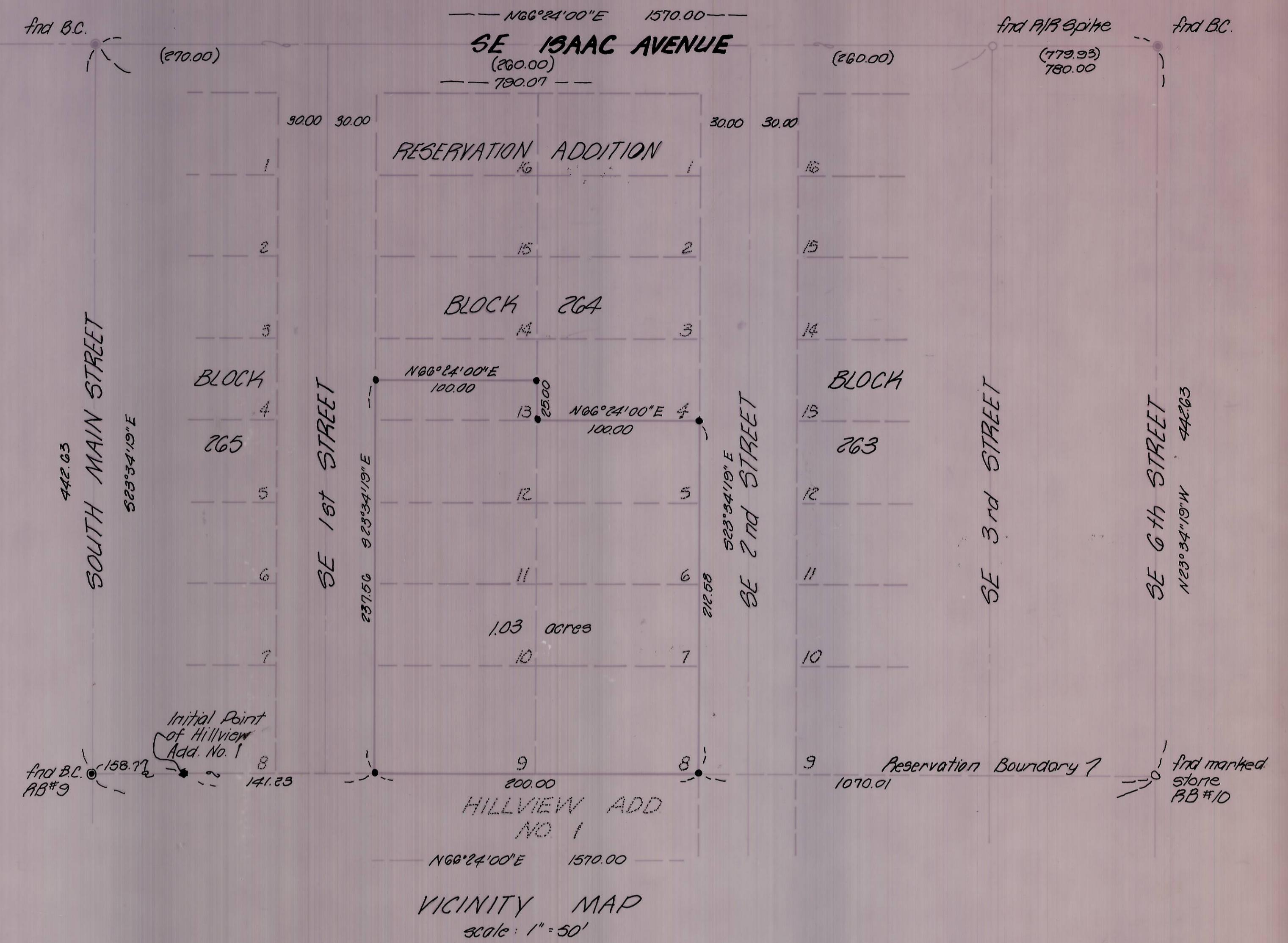
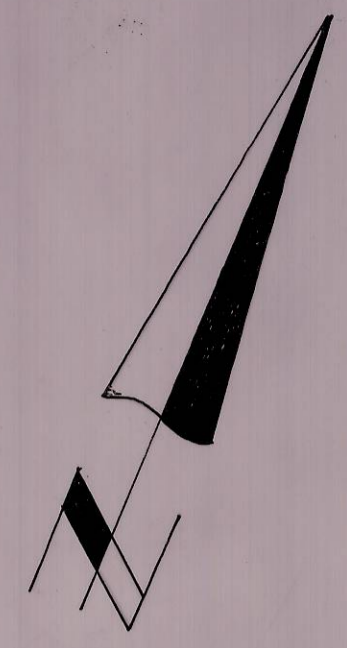


LOTS 5, 6, 7, 8, 9, 10, 11, 12, AND SOUTH HALF OF LOT 13, BLOCK 264  
Scale: 1" = 20'



**NARRATIVE:**

The purpose of this survey is to mark the boundaries of lots 5, 6, 7, 8, 9, 10, 11, 12 and the South half of lot 13, Block 264, Reservation Addition to the City of Pendleton.  
 Brass Caps at the intersection of South Main & Isaac and Reservation Boundary No. 9, a stone at Reservation Boundary No. 10 and a railroad spike at the intersection of SE 3rd and SE Isaac are as shown on a survey drawing by W.R. Wells for Everett Sims, County Surveyor Drwg. No. 83-177-B.  
 The Initial Point of Hillview No. 1 and a 3/8" x 30" iron rod at the intersection of SE 2nd and SE Joy were tied as shown on the Plat of Hillview No. 1, to the City of Pendleton.  
 Reservation Boundary No. 9, the Initial Point of Hillview No. 1 and the Brass Cap at the intersection of South Main & Isaac are also shown on a survey for Al Pedro by Hrumbein Eng. Ltd., County Surveyor Drwg. No. 83-163-A.  
 Bearings are based on the Plat of Reservation Addition and Hillview Addition No. 1.

- PP denotes power pole
- LP denotes light pole
- ( ) denotes plat distance
- denotes set 3/8" iron pin with aluminum cap stamped PLS 923
- denotes Brass Cap
- denotes monument found as noted

<b>KRUMBEIN ENGINEERING LTD.</b> ENGINEERS - SURVEYORS - PLANNERS 361 S.E. Second Pendleton, Oregon	Scale as shown	Dwn. By M.L.D.	Drng. No. 83-32D	Revision 1
	Date 12-13-83	Ckd. By D.H.H.	Job No. 83-148	Revision 2
Boundary Survey Topography Survey TOCON - HAMPTON		RECEIVED BY Umatilla County Surveyor Date 4/5/84 Rec'd By bc No. 84-57-C		

NE 1/4, SW 1/4, Sec. 11, T24N, R32E, W.M.