

BOUNDARY SURVEY OF TRACTS OF LAND, LOCATED IN PORTIONS OF SECTIONS 1, 2, 11 & 12, T.2N., R.27E., W.M., UMATILLA COUNTY, OREGON

W.O. 21-5675

PREPARED FOR

HALE BROS., INC.
73120 HIGHWAY 207
EHCO, OR 97826

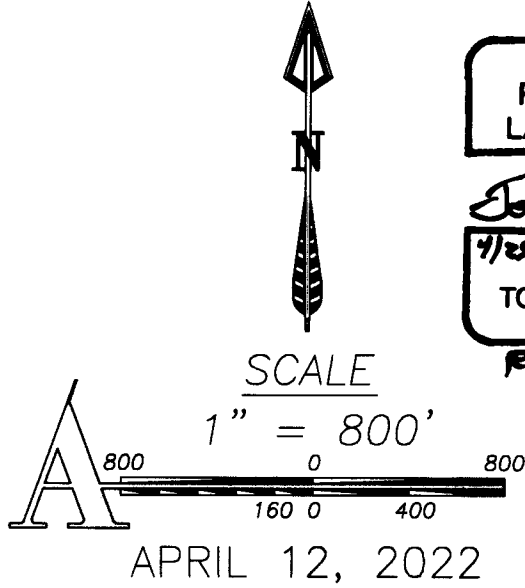
PREPARED BY

ARMSTRONG SURVEYING, INC.
267 NE SECOND ST. STE. 100
PRINEVILLE, OR 97754
(541) 447-7791

LEGEND

SEE SHEET 2

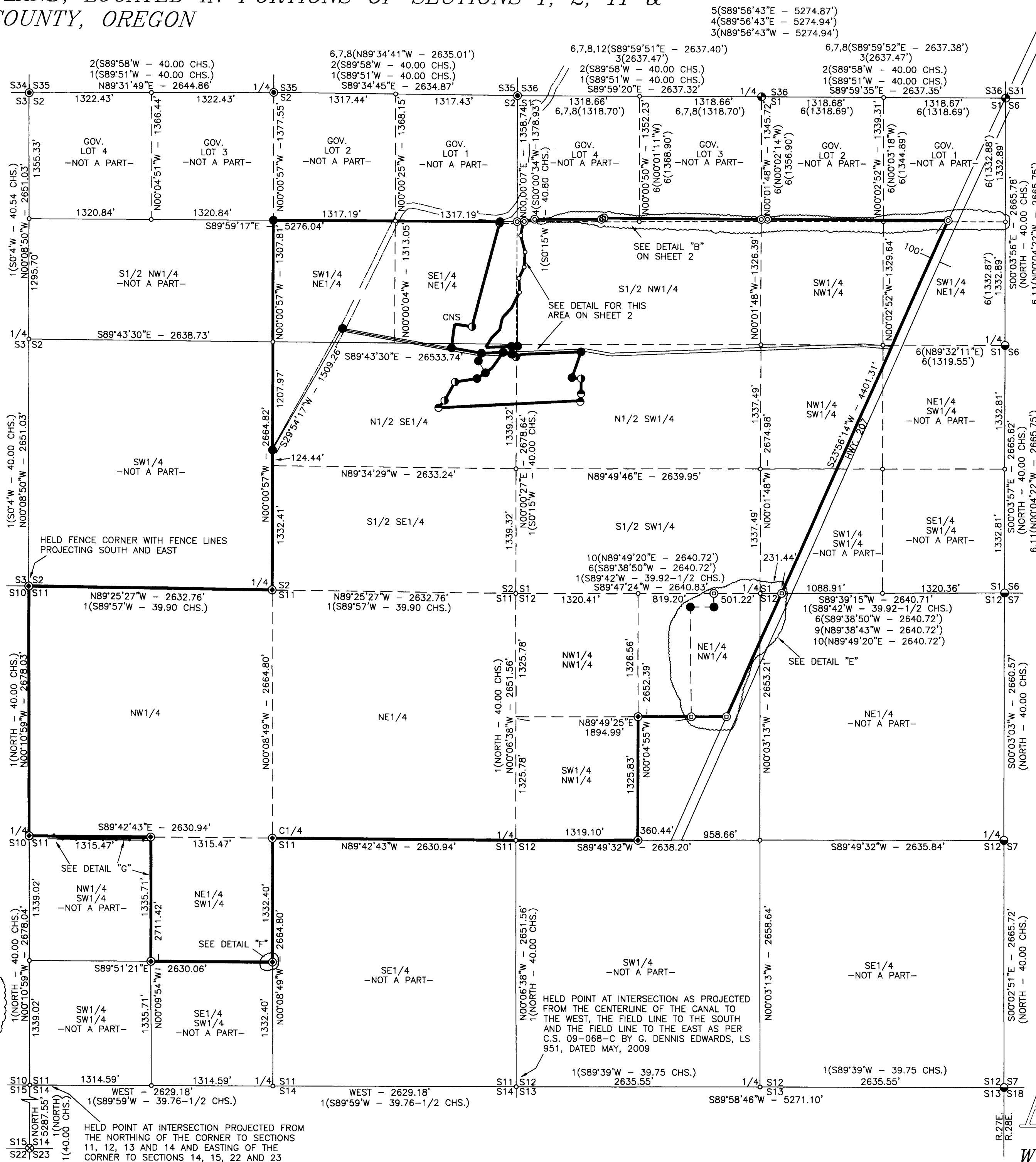
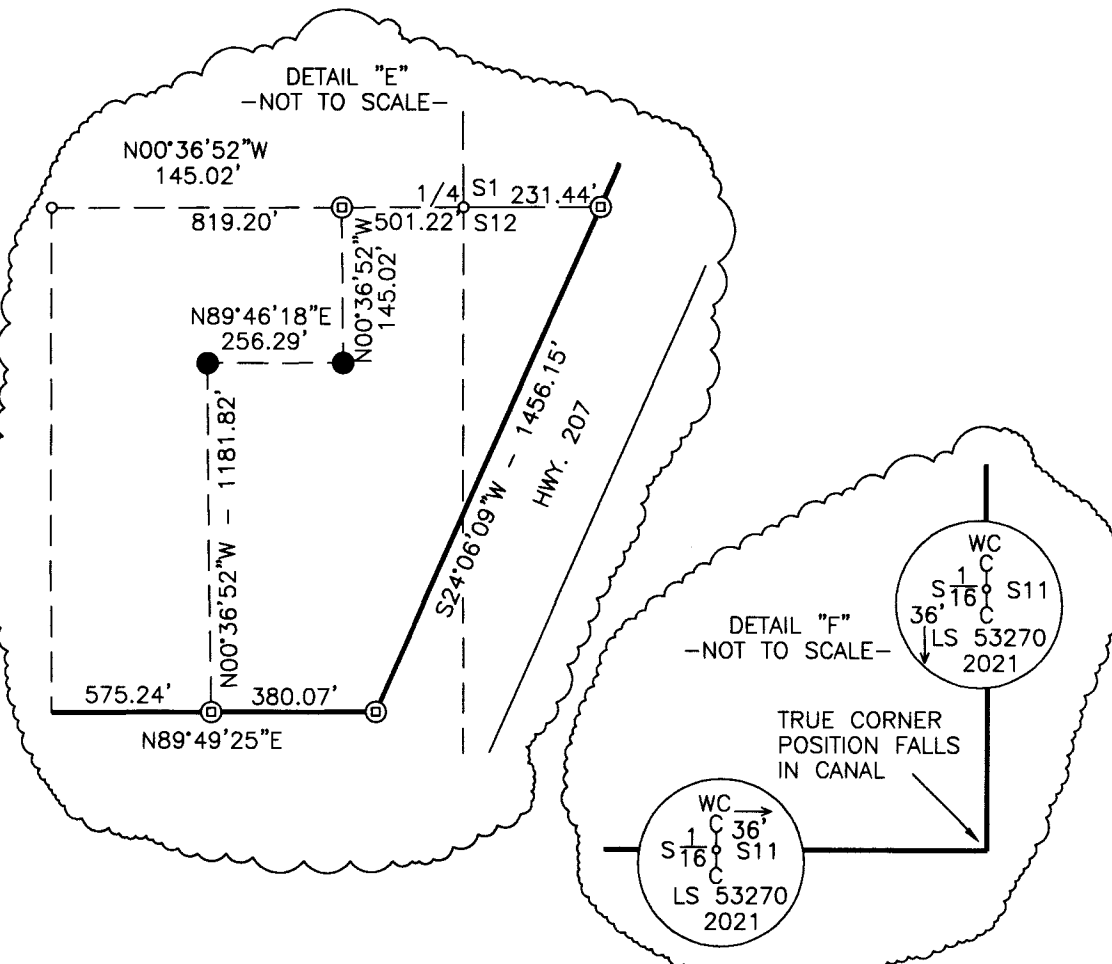
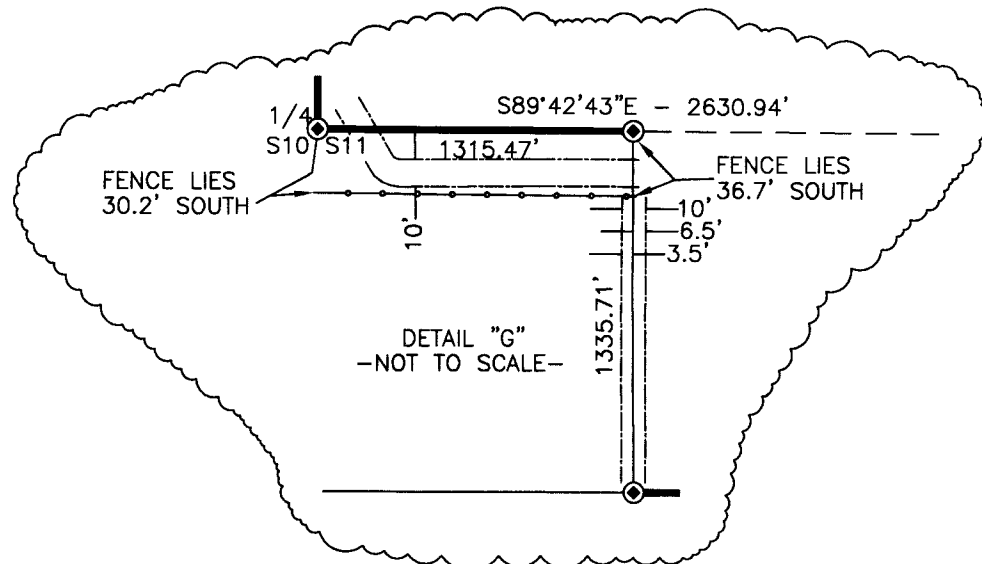
SURVEY NOTE:
SEE TABLE ON SHEET 3 FOR
CORNER REFERENCE INFORMATION



REGISTERED
PROFESSIONAL
LAND SURVEYOR

Todd R. Catterson
4/15/22 OREGON
JAN. 15, 2002
TODD R. CATTERSON
53270
RENEWS 12/31/23

APRIL 12, 2022



5(S89°56'43"E - 5274.87')
4(S89°56'43"E - 5274.94')
3(N89°56'43"W - 5274.94')

6,7,8,12(S89°59'51"E - 2637.40')
3(2637.47')

6,7,8(S89°59'52"E - 2637.38')
3(2637.47')

2(S89°58'W - 40.00 CHS.)
1(S89°51'W - 40.00 CHS.)
N89°31'49"E - 2644.86'

2(S89°58'W - 40.00 CHS.)
1(S89°51'W - 40.00 CHS.)
S89°34'45"E - 2634.87'

2(S89°58'W - 40.00 CHS.)
1(S89°51'W - 40.00 CHS.)
S89°59'35"E - 2637.35'

2(S89°58'W - 40.00 CHS.)
1(S89°51'W - 40.00 CHS.)
S89°59'20"E - 2637.32'

2(S89°58'W - 40.00 CHS.)
1(S89°51'W - 40.00 CHS.)
S89°59'35"E - 2637.35'

6,7,8,12(S89°59'51"E - 2637.40')
3(2637.47')

6,7,8(S89°59'52"E - 2637.38')
3(2637.47')

2(S89°58'W - 40.00 CHS.)
1(S89°51'W - 40.00 CHS.)
S89°59'20"E - 2637.32'

2(S89°58'W - 40.00 CHS.)
1(S89°51'W - 40.00 CHS.)
S89°59'35"E - 2637.35'

6,7,8,12(S89°59'51"E - 2637.40')
3(2637.47')

6,7,8(S89°59'52"E - 2637.38')
3(2637.47')

2(S89°58'W - 40.00 CHS.)
1(S89°51'W - 40.00 CHS.)
S89°59'20"E - 2637.32'

2(S89°58'W - 40.00 CHS.)
1(S89°51'W - 40.00 CHS.)
S89°59'35"E - 2637.35'

6,7,8,12(S89°59'51"E - 2637.40')
3(2637.47')

6,7,8(S89°59'52"E - 2637.38')
3(2637.47')

2(S89°58'W - 40.00 CHS.)
1(S89°51'W - 40.00 CHS.)
S89°59'20"E - 2637.32'

2(S89°58'W - 40.00 CHS.)
1(S89°51'W - 40.00 CHS.)
S89°59'35"E - 2637.35'

6,7,8,12(S89°59'51"E - 2637.40')
3(2637.47')

6,7,8(S89°59'52"E - 2637.38')
3(2637.47')

2(S89°58'W - 40.00 CHS.)
1(S89°51'W - 40.00 CHS.)
S89°59'20"E - 2637.32'

2(S89°58'W - 40.00 CHS.)
1(S89°51'W - 40.00 CHS.)
S89°59'35"E - 2637.35'

6,7,8,12(S89°59'51"E - 2637.40')
3(2637.47')

6,7,8(S89°59'52"E - 2637.38')
3(2637.47')

2(S89°58'W - 40.00 CHS.)
1(S89°51'W - 40.00 CHS.)
S89°59'20"E - 2637.32'

2(S89°58'W - 40.00 CHS.)
1(S89°51'W - 40.00 CHS.)
S89°59'35"E - 2637.35'

6,7,8,12(S89°59'51"E - 2637.40')
3(2637.47')

6,7,8(S89°59'52"E - 2637.38')
3(2637.47')

2(S89°58'W - 40.00 CHS.)
1(S89°51'W - 40.00 CHS.)
S89°59'20"E - 2637.32'

2(S89°58'W - 40.00 CHS.)
1(S89°51'W - 40.00 CHS.)
S89°59'35"E - 2637.35'

6,7,8,12(S89°59'51"E - 2637.40')
3(2637.47')

6,7,8(S89°59'52"E - 2637.38')
3(2637.47')

2(S89°58'W - 40.00 CHS.)
1(S89°51'W - 40.00 CHS.)
S89°59'20"E - 2637.32'

2(S89°58'W - 40.00 CHS.)
1(S89°51'W - 40.00 CHS.)
S89°59'35"E - 2637.35'

6,7,8,12(S89°59'51"E - 2637.40')
3(2637.47')

6,7,8(S89°59'52"E - 2637.38')
3(2637.47')

2(S89°58'W - 40.00 CHS.)
1(S89°51'W - 40.00 CHS.)
S89°59'20"E - 2637.32'

2(S89°58'W - 40.00 CHS.)
1(S89°51'W - 40.00 CHS.)
S89°59'35"E - 2637.35'

6,7,8,12(S89°59'51"E - 2637.40')
3(2637.47')

6,7,8(S89°59'52"E - 2637.38')
3(2637.47')

2(S89°58'W - 40.00 CHS.)
1(S89°51'W - 40.00 CHS.)
S89°59'20"E - 2637.32'

2(S89°58'W - 40.00 CHS.)
1(S89°51'W - 40.00 CHS.)
S89°59'35"E - 2637.35'

6,7,8,12(S89°59'51"E - 2637.40')
3(2637.47')

6,7,8(S89°59'52"E - 2637.38')
3(2637.47')

2(S89°58'W - 40.00 CHS.)
1(S89°51'W - 40.00 CHS.)
S89°59'20"E - 2637.32'

2(S89°58'W - 40.00 CHS.)
1(S89°51'W - 40.00 CHS.)
S89°59'35"E - 2637.35'

6,7,8,12(S89°59'51"E - 2637.40')
3(2637.47')

6,7,8(S89°59'52"E - 2637.38')
3(2637.47')

2(S89°58'W - 40.00 CHS.)
1(S89°51'W - 40.00 CHS.)
S89°59'20"E - 2637.32'

2(S89°58'W - 40.00 CHS.)
1(S89°51'W - 40.00 CHS.)
S89°59'35"E - 2637.35'

6,7,8,12(S89°59'51"E - 2637.40')
3(2637.47')

6,7,8(S89°59'52"E - 2637.38')
3(2637.47')

2(S89°58'W - 40.00 CHS.)
1(S89°51'W - 40.00 CHS.)
S89°59'20"E - 2637.32'

2(S89°58'W - 40.00 CHS.)
1(S89°51'W - 40.00 CHS.)
S89°59'35"E - 2637.35'

6,7,8,12(S89°59'51"E - 2637.40')
3(2637.47')

6,7,8(S89°59'52"E - 2637.38')
3(2637.47')

2(S89°58'W - 40.00 CHS.)
1(S89°51'W - 40.00 CHS.)
S89°59'20"E - 2637.32'

2(S89°58'W - 40.00 CHS.)
1(S89°51'W - 40.00 CHS.)
S89°59'35"E - 2637.35'

6,7,8,12(S89°59'51"E - 2637.40')
3(2637.47')

6,7,8(S89°59'52"E - 2637.38')
3(2637.47')

2(S89°58'W - 40.00 CHS.)
1(S89°51'W - 40.00 CHS.)
S89°59'20"E - 2637.32'

2(S89°58'W - 40.00 CHS.)
1(S89°51'W - 40.00 CHS.)
S89°59'35"E - 2637.35'

6,7,8,12(S89°59'51"E - 2637.40')
3(2637.47')

6,7,8(S89°59'52"E - 2637.38')
3(2637.47')

2(S89°58'W - 40.00 CHS.)
1(S89°51'W - 40.00 CHS.)
S89°59'20"E - 2637.32'

2(S89°58'W - 40.00 CHS.)
1(S89°51'W - 40.00 CHS.)
S89°59'35"E - 2637.35'

RECEIVED BY
Umatilla County Surveyor
Date: 4/28/22
Rec'd By: CT
No.: 22-050-B



SHEET 1 OF 3
DRG. NO. 21-5675.DWG
W.O. 21-5675

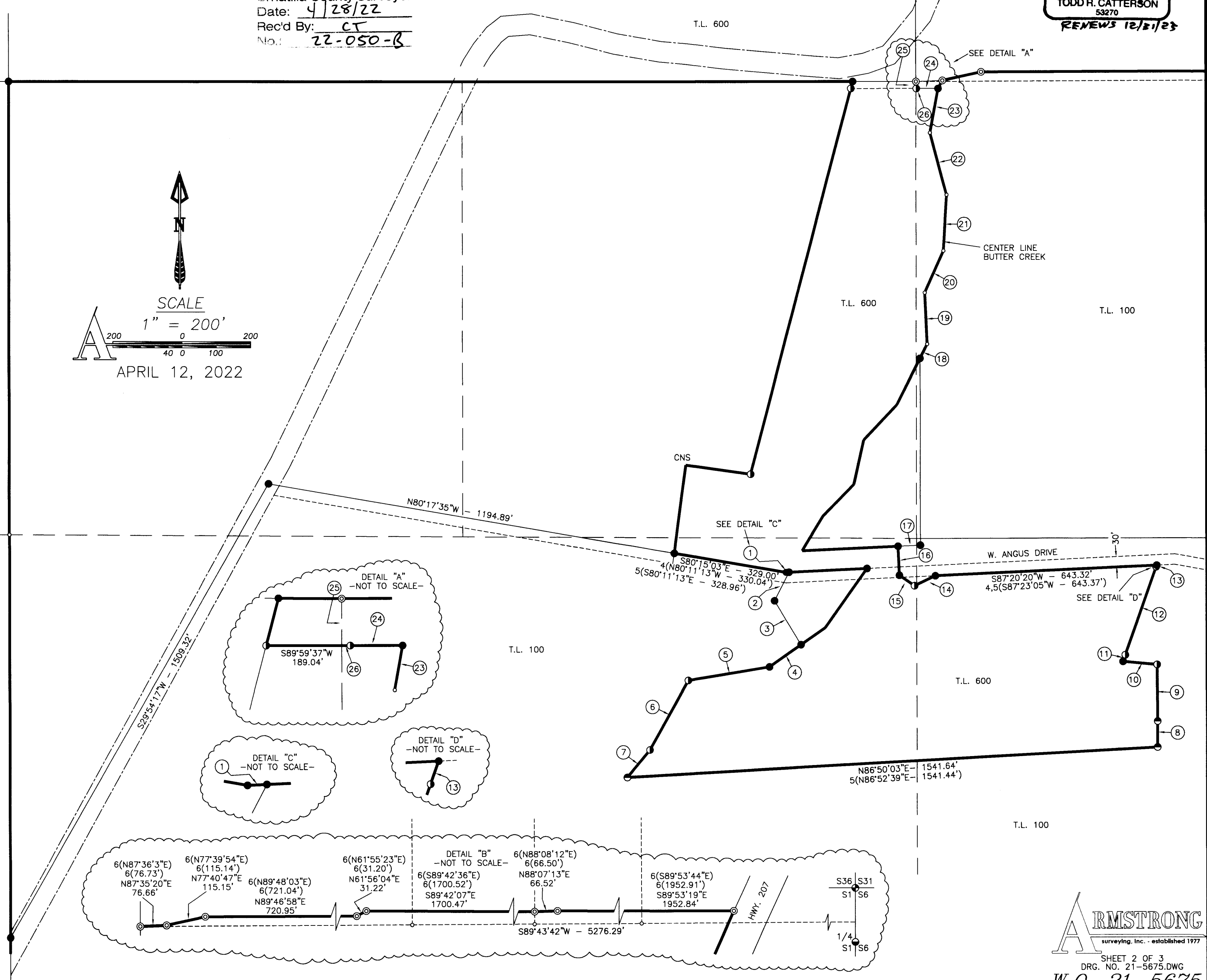
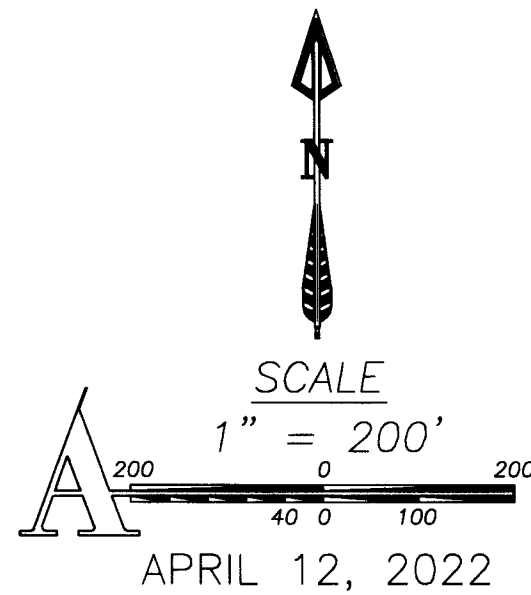
*BOUNDARY SURVEY OF TRACTS OF LAND, LOCATED IN
PORTIONS OF SECTIONS 1, 2, 11 & 12, T.2N., R.27E., W.M.,
UMATILLA COUNTY, OREGON
W.O. 21-5675*

REGISTERED
PROFESSIONAL
LAND SURVEYOR
Todd R. Catterson
4/25/22 OREGON
JAN. 15, 2002
TODD R. CATTERSON
53270
RENEWS 12/31/23

RECEIVED BY
Umatilla County Surveyor
Date: 4/28/22
Rec'd By: CT
No.: 22-050-B

LEGEND

- SET 5/8" x 30" LONG IRON ROD WITH YELLOW PLASTIC CAP MARKED "ARMSTRONG SURVEYING".
- ⊙ SET 5/8" x 30" LONG IRON ROD WITH 2" ALUMINUM CAP MARKED "ARMSTRONG SURVEYING".
- ⊙ FOUND 2-1/2" BRASS CAP AS PER DEPENDENT RESURVEY BY OTIS G. GOULD, CADASTRAL SURVEYOR, UNDER SPECIAL INSTRUCTIONS, DATED JANUARY 26, 1938.
- ⊙ FOUND 5/8" IRON ROD WITH YELLOW PLASTIC CAP MARKED "#951" AS PER C.S. 09-068-C BY G. DENNIS EDWARDS, LS 951, DATED MAY, 2009
- ⊙ FOUND 2-3/8" BRASS CAP AS PER C.S. 90-53-A BY G. DENNIS EDWARDS, LS 951, DATED JULY, 1990.
- ⊙ FOUND 5/8" IRON ROD WITH RED PLASTIC CAP MARKED "OR PLS 1106 WA PLS 17372" S PER C.S. 13-198-C BY WILLIAM R. WELLS, LS 1106, DATED JUNE 20, 2013.
- ⊙ FOUND 2-3/8" BRASS CAP AS PER C.S. 17-065-C BY WILLIAM R. WELLS, LS 1106, DATED MAY 24, 2017.
- ⊙ FOUND 5/8" IRON ROD WITH YELLOW PLASTIC CAP MARKED "WTS 56295 LS" AS PER C.S. 13-555-C BY STEPHEN K. HADDOCK, LS 56295, DATED DECEMBER 11, 2013.
- ⊙ FOUND 5/8" IRON ROD AS PER C.S. L-42-A BY DAVID H. KRUMBEIN, LS 933, DATED JULY 8, 1976, REVISED JANUARY 13, 1982.
- ⊙ FOUND 1-1/2" IRON PIPE AS PER C.S. 03-227-B WAYNE O. HARRIS, LS 346, DATED JULY 18, 1980.
- () RECORD AS PER GENERAL LAND OFFICE SURVEY BY DAVID P. THOMPSON, DEPUTY SURVEYOR, UNDER CONTRACT NO. 83, DATED JULY 22, 1859.
- (1) RECORD AS PER GENERAL LAND OFFICE SURVEY BY EBENEZER E. HAFT, DEPUTY SURVEYOR, UNDER CONTRACT NO. 93, DATED SEPTEMBER 11, 1860.
- (2) RECORD AS PER DEPENDENT RESURVEY BY OTIS G. GOULD, CADASTRAL SURVEYOR, UNDER SPECIAL INSTRUCTIONS, DATED JANUARY 26, 1938.
- (3) RECORD AS PER C.S. 90-53-A BY G. DENNIS EDWARDS, LS 951, DATED JULY, 1990.
- (4) RECORD AS PER C.S. 09-068-C BY G. DENNIS EDWARDS, LS 951, DATED MAY, 2009.
- (5) RECORD AS PER C.S. 13-198-C BY WILLIAM R. WELLS, LS 1106, DATED JUNE 20, 2013.
- (6) RECORD AS PER C.S. 13-555-C BY STEPHEN K. HADDOCK, LS 56295, DATED DECEMBER 11, 2013.
- (7) RECORD AS PER C.S. 13-556-C BY STEPHEN K. HADDOCK, LS 56295, DATED DECEMBER 11, 2013.
- (8) RECORD AS PER C.S. 13-556-C BY STEPHEN K. HADDOCK, LS 56295, DATED DECEMBER 11, 2013.
- (9) RECORD AS PER C.S. 19-110-B KEITH P. PRIMM, LS 48490, DATED NOVEMBER 21, 2019.
- (10) RECORD AS PER C.S. L-42-A BY DAVID H. KRUMBEIN, LS 933, DATED JULY 8, 1976, REVISED JANUARY 13, 1982.
- (11) RECORD AS PER C.S. 17-065-C BY WILLIAM R. WELLS, LS 1106, DATED MAY 24, 2017.
- (12) RECORD AS PER C.S. 21-072-B BY STEPHEN K. HADDOCK, LS 56295, DATED JUNE 23, 2021.
- ① LINE DATA - SEE TABLE ON SHEET 3
- COMPUTED POINT - NOTHING FOUND OR SET
- T.L. TAX LOT
- CNS COMPUTED NOT SET



DETAIL "B" - NOT TO SCALE -

6(N87°36'3"E) 6(76.73') N87°35'20"E 76.66'	6(N77°39'54"E) 6(115.14') N77°40'47"E 115.15'	6(N89°48'03"E) 6(721.04') N89°46'58"E 720.95'	6(N61°55'23"E) 6(31.20') N61°56'04"E 31.22'	6(S89°42'36"E) 6(1700.52') S89°42'07"E 1700.47'	6(N88°08'12"E) 6(66.50') N88°07'13"E 66.52'	6(S89°53'44"E) 6(1952.91') S89°53'19"E 1952.84'
---	--	--	--	--	--	--

529°54'17"W - 1509.32'

S36 S31
S1 S6
1/4
S1 S6

*BOUNDARY SURVEY OF TRACTS OF LAND, LOCATED IN
PORTIONS OF SECTION 1, 2, 11 & 12, T.2N., R.27E., W.M.,
UMATILLA COUNTY, OREGON
W.O. 21-5675*

SURVEYOR'S CERTIFICATE

I, TODD R. CATTERSON, A REGISTERED PROFESSIONAL LAND SURVEYOR IN THE STATE OF OREGON, ON THE BASIS OF MY KNOWLEDGE, INFORMATION, AND BELIEF, CERTIFY TO GREEN UMATILLA III THAT, AS A SURVEY MADE ON THE GROUND TO THE NORMAL STANDARD OF CARE OF PROFESSIONAL LAND SURVEYORS PRACTICING IN OREGON, I HAVE FOUND OR SET THE MONUMENTS AS SHOWN HEREON AND HAVE PREPARED THIS MAP AND NARRATIVE TO CORRECTLY REPRESENT SAID BOUNDARY SURVEY.

SURVEY NARRATIVE

WE WERE EMPLOYED BY GREEN UMATILLA III TO COMPLETE A BOUNDARY SURVEY OF THEIR PROPERTY LOCATED IN PORTIONS OF SECTIONS 1, 2, 11 AND 12 IN TOWNSHIP 2 NORTH, RANGE 27 EAST, W.M., UMATILLA COUNTY, OREGON. THE NORTH LINE OF SUBJECT PROPERTY IN SECTION 1 WAS ESTABLISHED BY STEPHEN K. HADDOCK, LS 56295, DURING C.S. 13-555-C. SEARCH IN THE FIELD RECOVERED THE MONUMENTS SET ALONG THIS LINE BY HADDOCK AND I HELD THEM AS FOUND. TO ESTABLISH THE EAST LINE OF SUBJECT PROPERTY I HELD THE RIGHT-OF-WAY MONUMENT FOR HIGHWAY 207 SET BY HADDOCK DURING C.S. 13-555-C AND THE FOUND RIGHT-OF-WAY MONUMENTS SET DURING C.S. L-42-A DAVID H. KRUMBEIN, LS 933. THE REMAINING LINES OF SUBJECT PROPERTY IN SECTIONS 11 AND 12 ARE ALIQUOT PART LINES AND SECTION BREAKDOWNS OF SAID SECTIONS 11 AND 12 WERE PERFORMED. THE SECTION CORNERS AND THE EAST ONE-QUARTER CORNER OF SAID SECTION 12 WERE ESTABLISHED DURING C.S. 17-065-C BY WILLIAM R. WELLS, LS 1106. SEARCH IN THE FIELD RECOVERED THESE MONUMENTS AND I HELD THEM AS FOUND. TO ESTABLISH THE SOUTH LINE OF SAID SECTION 12 I HELD THE FOUND MONUMENT AT THE SOUTHEAST CORNER OF SECTION 12. I COMPUTED THE SOUTHWEST CORNER OF SECTION 12 BY INTERSECTING THE PROJECTION OF A FIELD LINE TO THE EAST, A FIELD LINE TO THE SOUTH AND THE CENTERLINE OF A CANAL TO THE WEST AS G. DENNIS EDWARDS DID DURING C.S. 09-068-C. TO ESTABLISH THE WEST LINE OF SAID SECTION 12 I HELD MY COMPUTED POSITION AT THE SOUTHWEST CORNER OF SECTION 12 AND COMPUTED THE NORTHWEST CORNER OF SECTION 12 USING THE DIMENSIONS AND FOUND MONUMENTS SET BY DAVID H. KRUMBEIN, LS 933 DURING C.S. L-42-A. ONCE THE NORTHWEST CORNER OF SECTION 12 WAS COMPUTED I HELD MY COMPUTED POSITION AND HELD THE FOUND MONUMENT BY WELLS AT THE NORTHEAST CORNER OF SECTION 12 TO ESTABLISH THE NORTH LINE OF SECTION 12. THERE WAS NO PHYSICAL EVIDENCE AT OR PRIOR SURVEY RECORD FOR THE SOUTHWEST CORNER OF SAID SECTION 11. TO ESTABLISH THE SOUTHWEST CORNER OF SAID SECTION 11 I TIED THE 1-1/2" IRON PIPE AT THE CORNER COMMON TO SECTIONS 14, 15, 22 AND 23 SET DURING C.S. 03-227-B BY WAYNE O. HARRIS. I THEN COMPUTED THE SOUTHWEST CORNER OF SECTION 11 BY HOLDING THE EASTING OF THE HARRIS PIPE AND THE NORTHING OF MY COMPUTED POSITION FOR THE SOUTHWEST CORNER OF SAID SECTION 12, ESTABLISHING THE SOUTH LINE SECTION 11. TO ESTABLISH THE WEST LINE OF SAID SECTION 11 I HELD MY COMPUTED POSITION FOR THE SOUTHWEST CORNER OF SECTION 11 AND A FENCE CORNER PROJECTING SOUTH AND EAST AT THE NORTHWEST CORNER OF SECTION 11 THAT FITS HARMONIOUSLY WITH THE COMPUTED AND PREVIOUSLY MONUMENTED CORNERS AROUND THESE SURVEYED SECTIONS. I THEN HELD THE FENCE CORNER AT THE NORTHWEST CORNER OF SECTION 11 AND MY COMPUTED POSITION FOR THE NORTHWEST CORNER OF SAID SECTION 12 TO ESTABLISH THE NORTH LINE OF SECTION 11. WITH THE SECTION CORNER POSITIONS ESTABLISHED AROUND SECTIONS 11 AND 12 I COMPUTED THE ONE-QUARTER CORNER POSITIONS FOR SECTIONS 11 AND 12 AT SINGLE PROPORTIONATE POSITIONS. I THEN PROCEEDED TO BREAKDOWN SECTIONS 11 AND 12 AS PER THE B.L.M. MANUAL OF INSTRUCTIONS TO COMPUTE THE ALIQUOT PART LINES. THE MONUMENTS SET IN THE INTERIOR OF TAX LOT 600 ARE FOR A PLANNED FUTURE PROPERTY LINE ADJUSTMENT. THIS SURVEY WAS PERFORMED USING A TRIMBLE R10 GPS SYSTEM IN RTK MODE.

REGISTERED
PROFESSIONAL
LAND SURVEYOR

Todd R. Catterson
4/28/22 OREGON
JAN. 15, 2002
TODD R. CATTERSON
53270

RENEWS 12/31/23

LINE DATA TABLE		
NO.	LENGTH	BEARING
1	8.22'	N87°19'35"E
2	92.01'	S26°58'59"W
3	148.16'	S31°13'53"E
4	111.81'	S55°16'42"W
5	238.66'	S80°41'59"W
4(5)	238.63'	S80°45'30"W
5(5)	238.63'	S80°45'30"W
6	229.99'	S29°13'16"W
4(6)	230.10'	S29°14'50"W
5(6)	230.10'	S29°14'50"W
7	102.56'	S39°47'41"W
4(7)	102.47'	S39°49'52"W
8	75.08'	N00°03'37"W
5(8)	75.11'	S00°00'26"W
9	163.75'	N00°05'48"W
4(9)	163.69'	N00°00'26"E
5(9)	163.69'	N00°00'26"E
10	99.32'	N84°55'19"W
4(10)	99.32'	N84°54'55"W
5(10)	99.32'	N84°54'55"W
11	20.00'	N19°28'00"E
4(11)	20.00'	N19°29'29"E
5(11)	20.00'	N19°29'29"E
12	270.38'	N19°25'28"E
4(12)	270.38'	N19°29'29"E
5(12)	270.38'	N19°29'29"E
13	4.55'	N20°21'36"E
4(13)	4.52'	N19°29'29"E
5(13)	4.52'	S19°29'29"W

LINE DATA TABLE		
NO.	LENGTH	BEARING
14	66.85'	S64°35'15"W
4(14)	66.87'	S64°37'56"W
5(14)	66.87'	S64°37'56"W
15	53.14'	N55°33'19"W
4(15)	53.14'	N55°30'40"W
5(15)	53.14'	N55°30'40"W
16	83.81'	N02°39'34"W
4(16)	83.81'	N2°36'55"W
5(16)	83.81'	N02°36'55"W
17	65.24'	S87°20'26"W
18	46.51'	N27°01'01"E
19	148.74'	N02°46'41"W
4(19)	148.75'	S2°44'02"E
5(19)	148.75'	S02°44'02"E
20	132.95'	N23°58'54"E
4(20)	132.96'	S24°01'33"W
5(20)	132.96'	S24°01'33"W
21	161.71'	N03°29'50"E
4(21)	161.72'	S3°32'29"W
5(21)	161.72'	S3°32'29"W
22	185.32'	N15°01'56"W
4(22)	185.33'	S14°59'17"E
5(22)	185.33'	S14°59'17"E
23	130.70'	N10°16'49"E
4(23)	130.71'	S10°19'28"W
5(23)	130.71'	S10°19'28"W
24	63.07'	N89°59'20"W
5(24)	63.07'	N89°59'20"W
25	20.08'	S00°00'48"W
26	0.94'	N89°59'20"W

CORNER REFERENCE TABLE			
CORNER	REFERENCE DESCRIPTION	BEARING	DISTANCE
NW1/16	5/8" IRON ROD W/ YELLOW PLASTIC CAP MARKED "ARMSTRONG SURVEYING"	S86°E	20.14'
S12	5/8" IRON ROD W/ YELLOW PLASTIC CAP MARKED "ARMSTRONG SURVEYING"	N36°W	20.08'
C1/4	STAMPED "X" AND LS 53270 IN S.W. CORNER OF BRIDGE	N64°E	15.32'
	5/8" IRON ROD W/ YELLOW PLASTIC CAP MARKED "ARMSTRONG SURVEYING"	S10°E	14.97'
	STAMPED "X" AND LS 53270 IN EAST SIDE OF 2-7/8" IRON PIPE	S78°W	56.38'
S11	5/8" IRON ROD W/ YELLOW PLASTIC CAP MARKED "ARMSTRONG SURVEYING"	N15°W	15.03'
	5/8" IRON ROD W/ YELLOW PLASTIC CAP MARKED "ARMSTRONG SURVEYING"	N15°W	15.03'
CW1/16	RAILROAD TIE POST W/ BRASS WASHER MARKED "LS 53270" IN WEST FACE	S88°E	23.62'
	STAMPED "X" AND LS 53270 IN NORTH FACE 4"x4" STEEL FENCE POST	S08°W	37.86'
1/4	5/8" IRON ROD W/ YELLOW PLASTIC CAP MARKED "ARMSTRONG SURVEYING"	N60°E	9.88'
	5/8" IRON ROD W/ YELLOW PLASTIC CAP MARKED "ARMSTRONG SURVEYING"	S53°E	48.24'
	6"x6" POST W/ BRASS WASHER MARKED "LS 53270" IN EAST FACE	S80°W	21.14'
	6"x6" POST W/ BRASS WASHER MARKED "LS 53270" IN EAST FACE	N81°W	22.43'
SEC. COR.	5/8" IRON ROD W/ YELLOW PLASTIC CAP MARKED "ARMSTRONG SURVEYING" DOWN 1.0'	N02°E	20.08'
	5/8" IRON ROD W/ YELLOW PLASTIC CAP MARKED "ARMSTRONG SURVEYING" DOWN 1.0'	S88°E	19.97'
	5/8" IRON ROD W/ YELLOW PLASTIC CAP MARKED "ARMSTRONG SURVEYING"	S06°W	20.05'
	5/8" IRON ROD W/ YELLOW PLASTIC CAP MARKED "ARMSTRONG SURVEYING"	N89°W	20.06'
CN1/16	5/8" IRON ROD W/ YELLOW PLASTIC CAP MARKED "ARMSTRONG SURVEYING" DOWN 1.0'	S54°E	9.95'
	5/8" IRON ROD W/ YELLOW PLASTIC CAP MARKED "ARMSTRONG SURVEYING" DOWN 1.0'	S51°W	10.11'
CW1/16	RAILROAD TIE FENCE POST WITH TACK AND BRASS WASHER STAMPED "LS 53270"	S23°E	20.25'
	RAILROAD TIE FENCE POST WITH TACK AND BRASS WASHER STAMPED "LS 53270"	S52°W	29.58'
1/4	5/8" IRON ROD W/ YELLOW PLASTIC CAP MARKED "ARMSTRONG SURVEYING"	N49°E	14.02'
	5/8" IRON ROD W/ YELLOW PLASTIC CAP MARKED "ARMSTRONG SURVEYING"	S22°E	32.03'
	A 4-1/2" ROUND STEEL FENCE POST STAMPED "LS 53270"	S26°E	33.23'
	5/8" IRON ROD W/ YELLOW PLASTIC CAP MARKED "ARMSTRONG SURVEYING"	N67°W	14.02'

RECEIVED BY
Umatilla County Surveyor
Date: 4/28/22
Rec'd By: CT
No.: 22-050-8

