

# BASIS OF BEARING

True Geodetic North at the quarter corner between Sections 26 and 27, Township 1 North, Range 35 East of the Willamette Meridian, as established by GPS observation

SCALE: 1" = 800'

- Found monument as described, marked as per Umatilla County Monumentation Records
- Found 5/8" iron pin found by Gaylord in 1991. Added 2 1/2" aluminum cap, marked as per Umatilla County Monumentation record, filed separately.
- ⊙ Set 2 1/2" aluminum pipe with 3" aluminum cap, marked as per Umatilla County Monumentation records, filed separately
- Set 5/8" iron pin with 2 1/2" aluminum cap marked as per Umatilla County Monumentation records, filed separately
- { } Record measurement as per Survey Number 16-058-B
- - - Record measurement as per Survey Number 18-056-B
- [ ] Record measurement as per GLO Contract dated May 4, 1887, executed by Currin and Noland
- ( ) Record measurement as per GLO Contract 635 dated April 19, 1895, executed by Marius Buchanan
- x - Fenceline
- Set steel fencepost on line
- SFNF Searched for not found

## REFERENCE MATERIAL

Umatilla County Monumentation Records  
 Survey Number F-024-AX  
 Survey Number 06-509-B  
 Survey Number 05-181-B  
 Survey Number 16-058-B  
 Survey Number 18-056-B

BLM remonumentation survey, executed by A. Joseph Garrison, under special instructions dated July 13, 1979

GLO Special Contract dated May 4, 1887, executed by Currin and Noland

GLO Contract 635 dated April 19, 1895, executed by Marius Buchanan

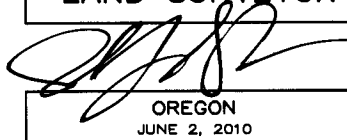
### DEED REFERENCES

Microfilm Document No. 2013-6120652  
 Microfilm Document No. 2013-6120649  
 Microfilm Document No. 2013-6120651

## RECEIVED BY

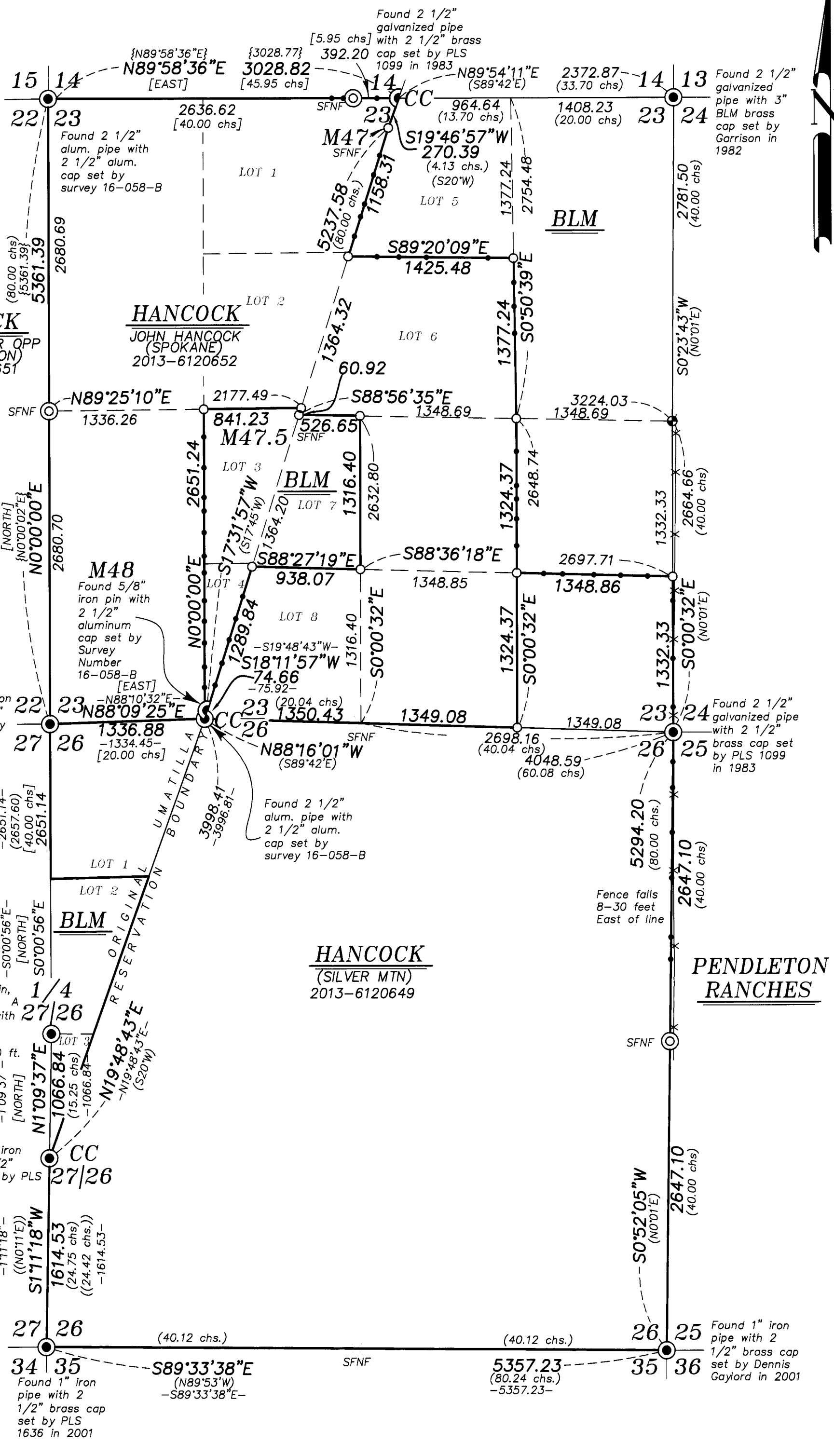
Umatilla County Surveyor  
 Date: 12/1/21  
 Rec'd By: CT  
 No.: 21-125-B

REGISTERED  
 PROFESSIONAL  
 LAND SURVEYOR



OREGON  
 JUNE 2, 2010  
 JEFFREY S. HSU  
 83571  
 Renewal Date: June 30, 2023

<b>BAGETT, GRIFFITH &amp; BLACKMAN</b> 2006 Adams Avenue, LaGrande, Oregon Map of Survey	
Sited in Section 23 and 26, Township 1 North, Range 35 East of the Willamette Meridian	
UMATILLA COUNTY, OREGON	
SURVEYED FOR	Hancock Forest Management
SURVEYED BY	J. S. H.
Scale: 1" = 800'	Drawn by: K. A. T. Sept. 2021



## NARRATIVE

This survey was done at the request of Patrick Marolla, on behalf of Hancock Forest Management, land manager of the lands within. Mr. Marolla wanted to mark certain ownership lines prior to a timber sale. I recover the monuments as shown hereon. I search for the quarter corners and find little evidence of their existence. The area has been logged multiple times since the original GLO surveys. At most of the subdivision corners the BLM had placed approx. corner fence posts. I reject these fence posts. I find the iron pin found by Dennis Gaylord, PLS 1636, in 1991 at the East 1/4 corner of Section 23 and accept it in place. Mile 47 of the Umatilla Indian Reservation boundary line was placed using the grant boundary method (BLM Manual of instruction 7-54) between the found monument at Mile 48 and the found monument at the closing corner of Sections 14 and 23. I proportion the North quarter corner of Section 14, between the closing corner on the reservation line and Northwest corner. The closing corner on the South line of Section 23 was set by Currin and Noland in the subdivision to the West of the reservation boundary. It was accepted by Buchanan in the subdivision East of the reservation boundary. For the South quarter of Section 23, I therefore place at proportionate position between the closing corner on the reservation line and Southeast corner. The West quarter corner of Section 26 is placed at single proportion.

The section subdivision of Section 23 was done by first placing the East/West center of section line at mean weighted bearing from the North and South lines of the Section. From the South quarter corner position of Section 23, I hold the same bearing as the East line of the Southeast quarter of the Section (BLM Manual of Instructions 3-120/121). I hold the East sixteenth on the South line of Section 23 at midpoint, running a line North, also parallel with the East line of the SE quarter of Section 23. I hold the midpoints for the Center-South 1/16th position and the South 1/16th position on the East boundary of the Section.

The line between Lots 7 and 8 were place by mean weighted bearing from the Center-South 1/16th to intersection the reservation boundary. I hold a proportionate position for the East 1/16th position on the North line of Section 23, and run a line to the Center-East 1/16th position, as previously established to place the East line of Lots 5 and 6. I hold a midpoint on this line for the Northeast 1/16th corner and place the dividing line between the lots at mean weighted bearing.

For a subdivision on the West side of the reservation boundary, I establish the East/West running centerline at mean weighted bearing. I hold the closing corner on the South line of Section 23 as the South corner of Government Lot 4 and run a line parallel with the West line of the section to establish the Northwest corner of Government Lot 3 (Center-West 1/16th).

I find no other unusual conditions with this survey.