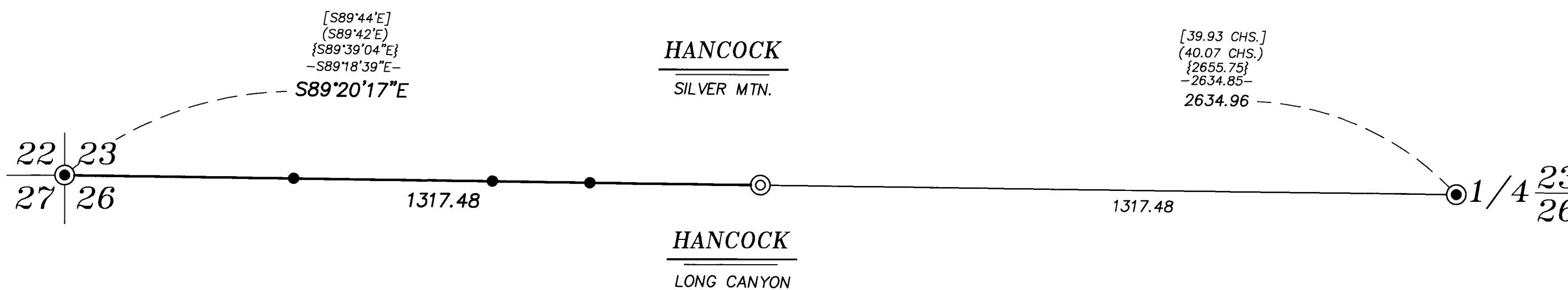


BASIS OF BEARING

True Geodetic North at the corner common to Sections 28, 29, 32 and 33, Township 4 North, Range 37 East of the Willamette Meridian, as determined by GPS observation

SCALE: 1" = 200'



LEGEND

- Found 1 1/2" iron pipe with 2 1/2" brass cap marked as per Umatilla County Monumentation record, set by Survey Number 93-064-C
- ⊙ Set 5/8" x 30" iron pin with 2 1/2" aluminum cap, marked as per Umatilla County Monumentation records, filed separately
- [] Record measurement as per survey executed by George S. Pershin, under GLO contract No. 332, dated Just 29, 1879.
- () Record measurement as per survey executed by Charles L. and William C. Campbell, under GLOS contract No. 733, dated March 22, 1901
- { } Record measurement as per Survey Number N-65
- - Record measurement as per Survey Number 93-064-C
- Set fence post on line.

REFERENCE MATERIAL

Umatilla County Monumentation Records
Survey Number N-65
Survey Number 93-064-C

Field Notes from GLO Contract No. 332,
dated July 29, 1879, executed by
George S. Pershin

Field Notes from GLO Contract No. 733,
dated March 22, 1901, executed by
Charles L. and William C. Campbell

DEED REFERENCES
MF 2013-6120649
MF 2013-6120651

NARRATIVE

This survey was done at the request of Patrick Marolla on behalf of Hancock Forest Management, land manager for the land within. Mr. Marolla wanted the West 1/16th corner set and select lines posted prior to logging.

I recover the monuments as shown hereon and accept them in place. I placed the West 1/16th as per BLM Manual of instructions 2009. I find no unusual conditions with this survey.



RECEIVED BY
Umatilla County Surveyor
Date: 11/30/21
Rec'd By: CT
No.: 21-124-6

BAGETT, GRIFFITH & BLACKMAN 2006 Adams Avenue, LaGrande, Oregon Map of Survey		
Situate in Sections 23 and 26, Township 4 North, Range 37 East of the Willamette Meridian		
UMATILLA COUNTY, OREGON		
SURVEYED FOR	Hancock Forest Management	
SURVEYED BY	J. S. H.	
Scale: 1" = 200'	Drawn by: E. C. A.	October 2021