

MARKED STONE
NW COR., NE 1/4 SW 1/4,
SEC. 1, T. 5 N., R. 35 E.W.M.

360.02'

O.I.P.

460.11'
S

O.I.P.

292.87'

BEHRENS

U.S. HWY. 11

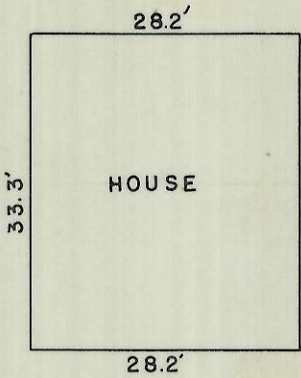
69'
S

90°
E 30'

90°
W 150'

90°

S 69'



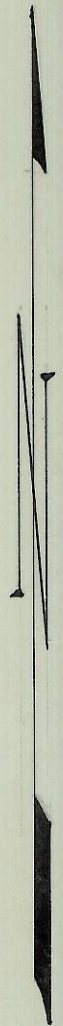
N 69'

90°
E 30'

90°
E 150'

90°

BEHRENS



Q-971-A



HAYES & HARRIS ENGINEERING

SURVEY FOR

E.M.J. BEHRENS

OF A HOUSE & LOT IN THE
NE 1/4, SW 1/4, SEC. 1, T. 5 N., R. 35 E.W.M.

SCALE
1" = 20'

DATE
11-21-54

DRAWN BY
W.O.H.