

NE1/4 SW1/4 SEC 19 T 4N R 35E WM

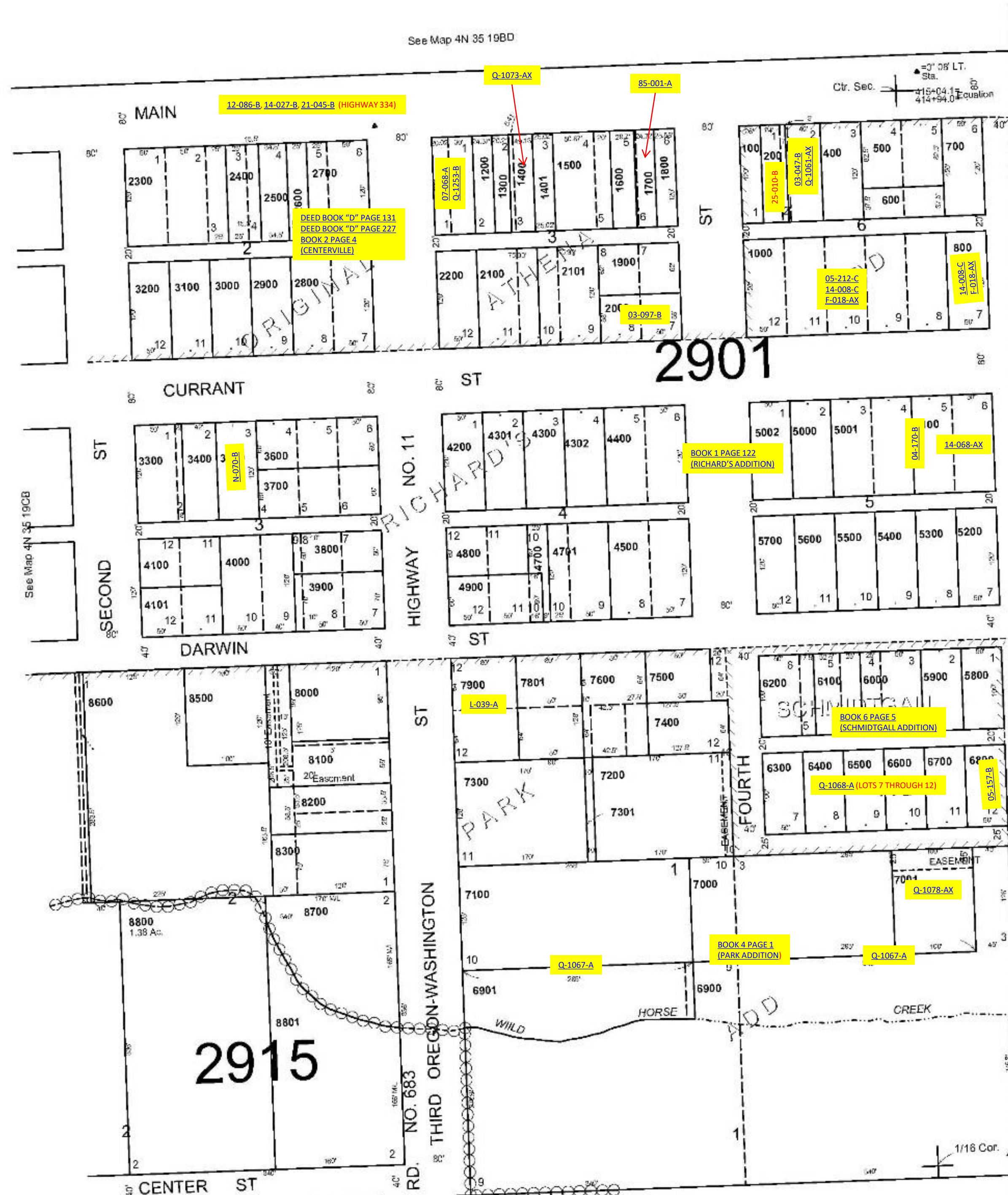
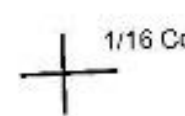
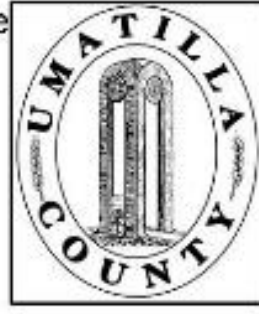
4N3519CA

UMATILLA COUNTY

AERIAL PHOTO NO. 5P-100

SCALE: 1" = 100'

This map was prepared for Assessment & Taxation purposes only and was NOT prepared nor is it suitable for legal, engineering or surveying purposes.



CANCELLED NOS
7701
4800
7700
8401
8400
7800

REVISED: 04-05-18
4N3519CA