

ALSO SEE SURVEYS 90-042-C, L-020-C, L-021-C, L-022-C; CORNER RECORDS; G.L.O. SURVEYS; REDFIELD SURVEYS

This map was prepared for Assessment & Taxation purposes only and was NOT prepared nor is it suitable for legal, engineering or surveying purposes.

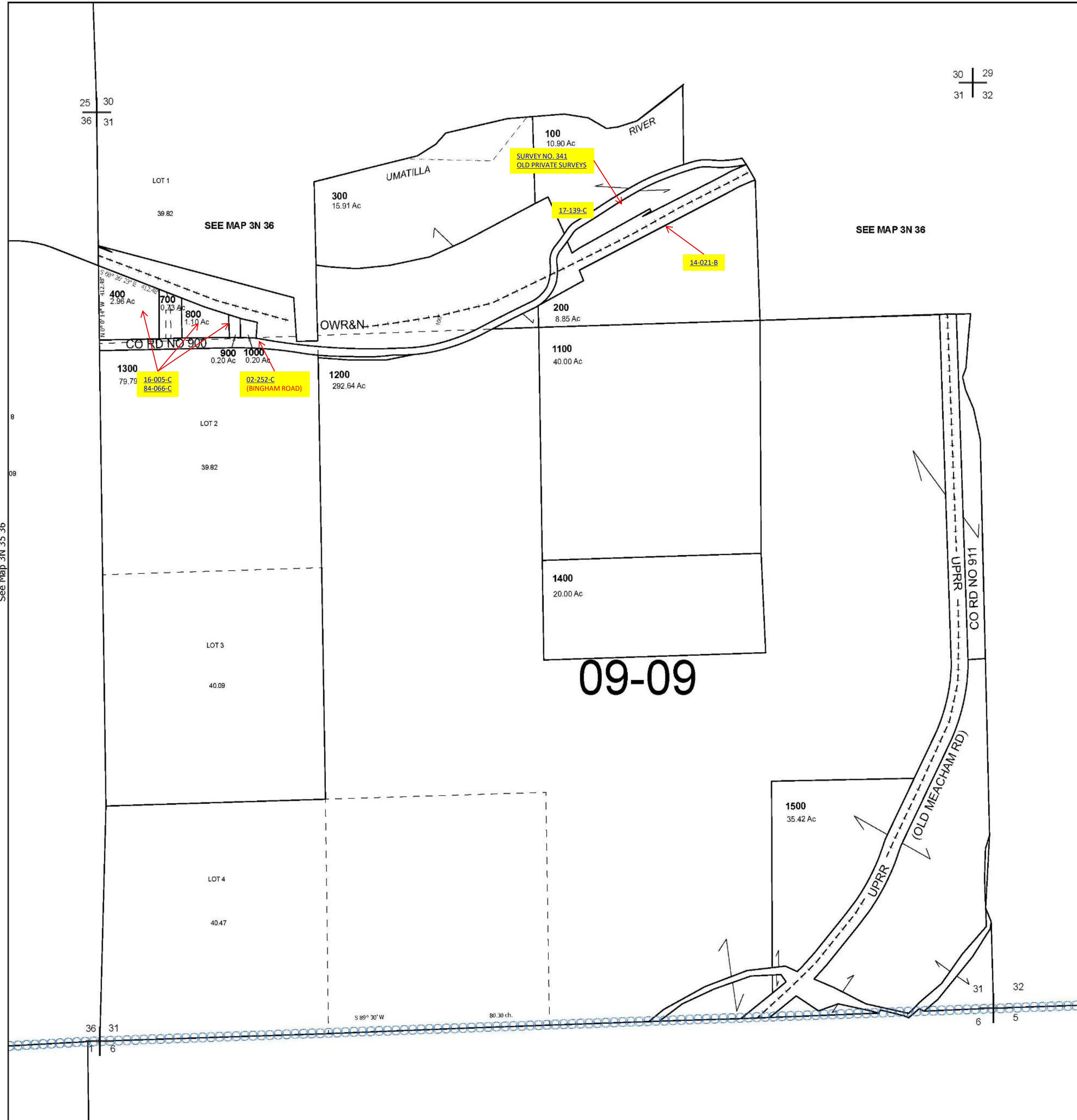
Cancelled Tax Lots  
600  
500

# SEC 31 T3N R36E WM UMATILLA COUNTY

## 3N 36 31

SCALE 1" = 400'

See Map 3N 36



Revised 2/6/2025

See Map 2N 36

## 3N 36 31