

This map was prepared for Assessment & Taxation purposes only and was NOT prepared nor is it suitable for legal, engineering or surveying purposes.

Cancelled Tax Lots

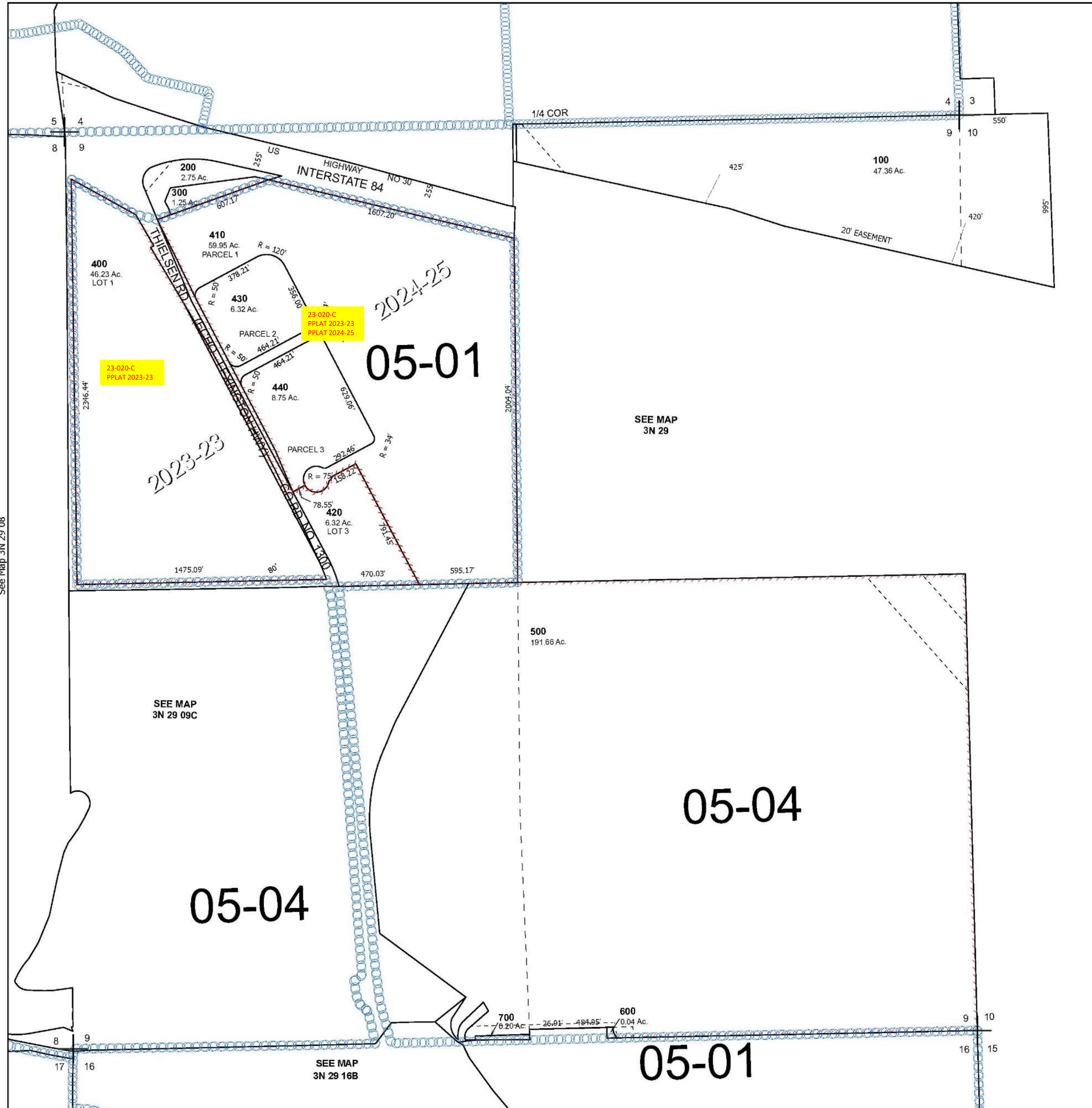
SEC 09 T3N R29E WM UMATILLA COUNTY

3N 29 09

Echo

SCALE 1" = 400'

See Map 3N 29 04



See Map 3N 29 08

See Map 3N 29

Revised 2/10/2025

See Map 3N 29 16A

3N 29 09