

This map was prepared for Assessment & Taxation purposes only and has NOT been prepared for legal, engineering or surveying purposes.

T2S R301/2E WM UMATILLA COUNTY

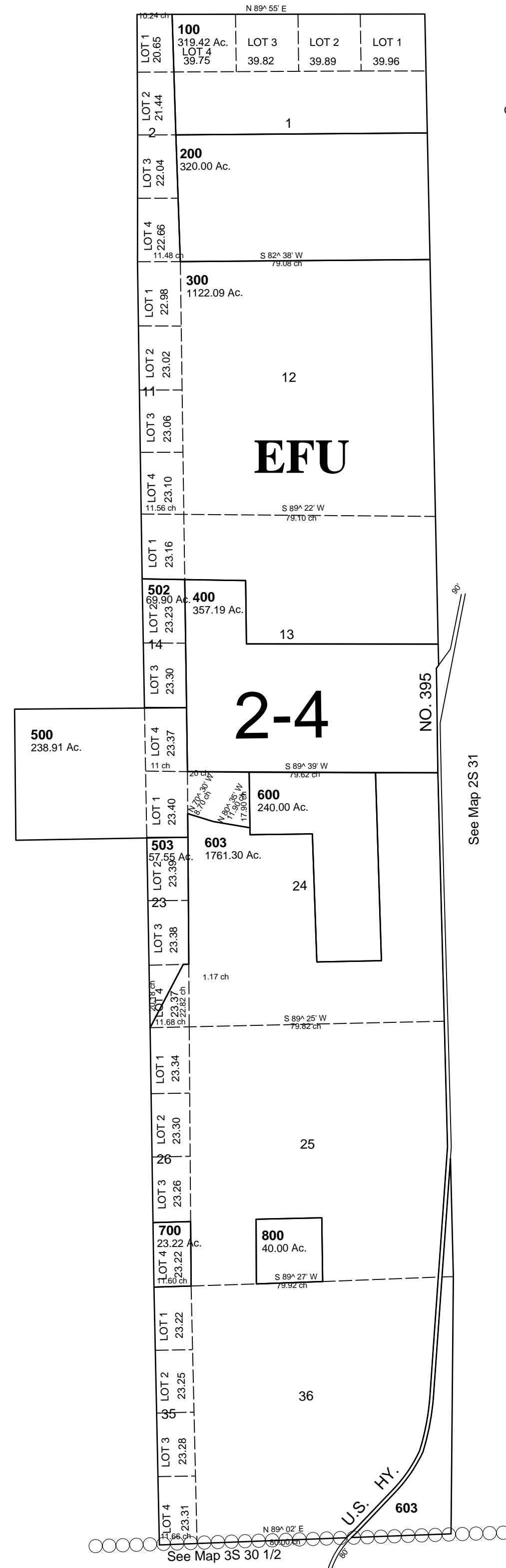
5/11/06

SCALE 1"=2000'

See Map 1S 30 1/2

2S 301/2

AERIAL PHOTO NO. NZ 7P-140,
8P 31-32 & 53-54



CANCELLED
TL 401
601
602
501
504

2S 301/2