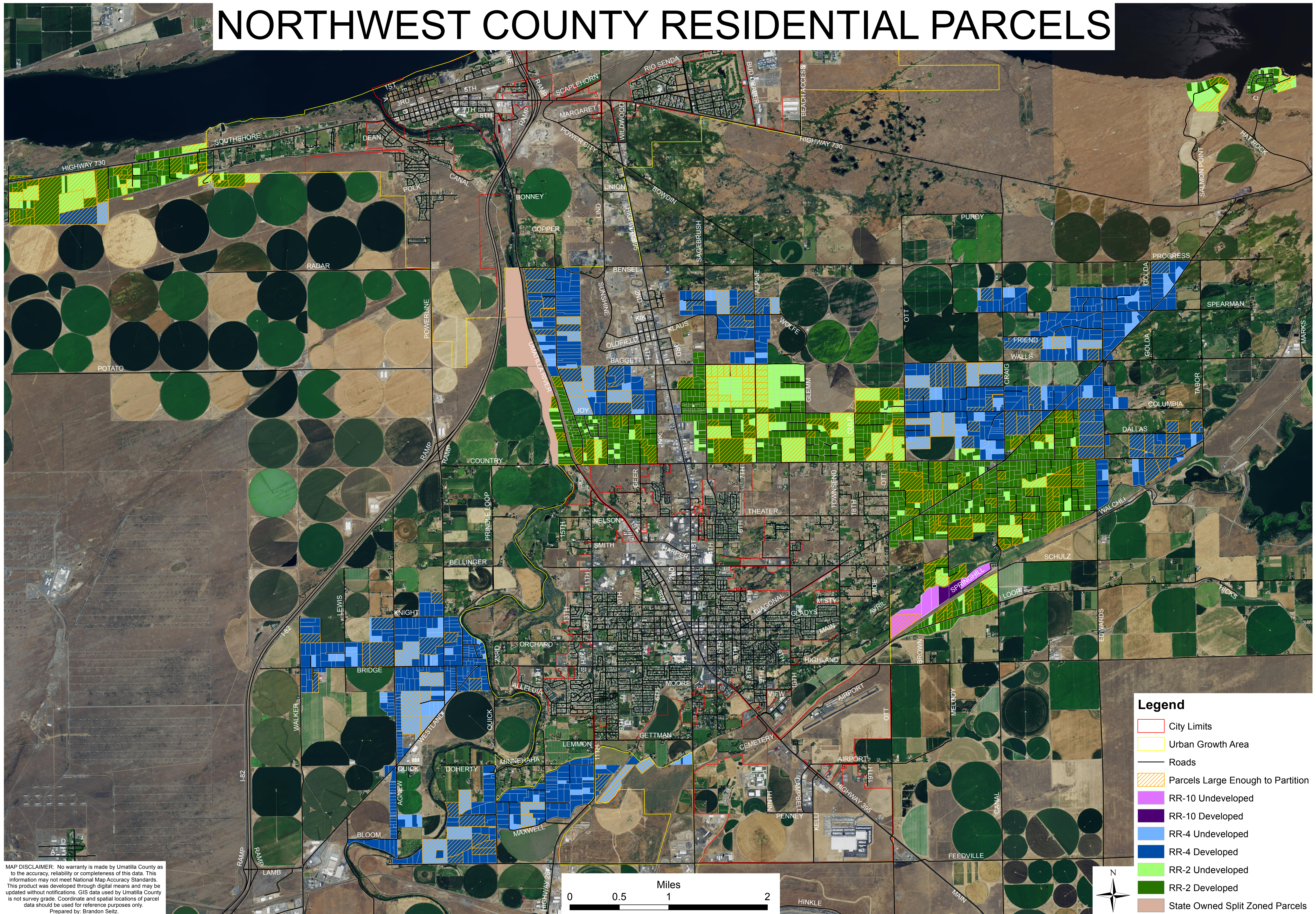
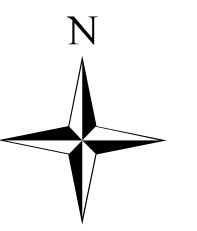
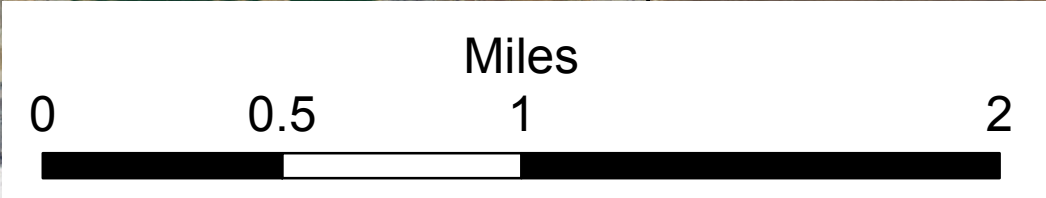


NORTHWEST COUNTY RESIDENTIAL PARCELS



MAP DISCLAIMER: No warranty is made by Umatilla County as to the accuracy, reliability or completeness of this data. This information may not meet National Map Accuracy Standards. This product was developed through digital means and may be updated without notification. GIS data used by Umatilla County is not survey grade. Coordinate and spatial locations of parcel data should be used for reference purposes only. Prepared by: Brandon Seitz.



Legend

- City Limits
- Urban Growth Area
- Roads
- Parcels Large Enough to Partition
- RR-10 Undeveloped
- RR-10 Developed
- RR-4 Undeveloped
- RR-4 Developed
- RR-2 Undeveloped
- RR-2 Developed
- State Owned Split Zoned Parcels