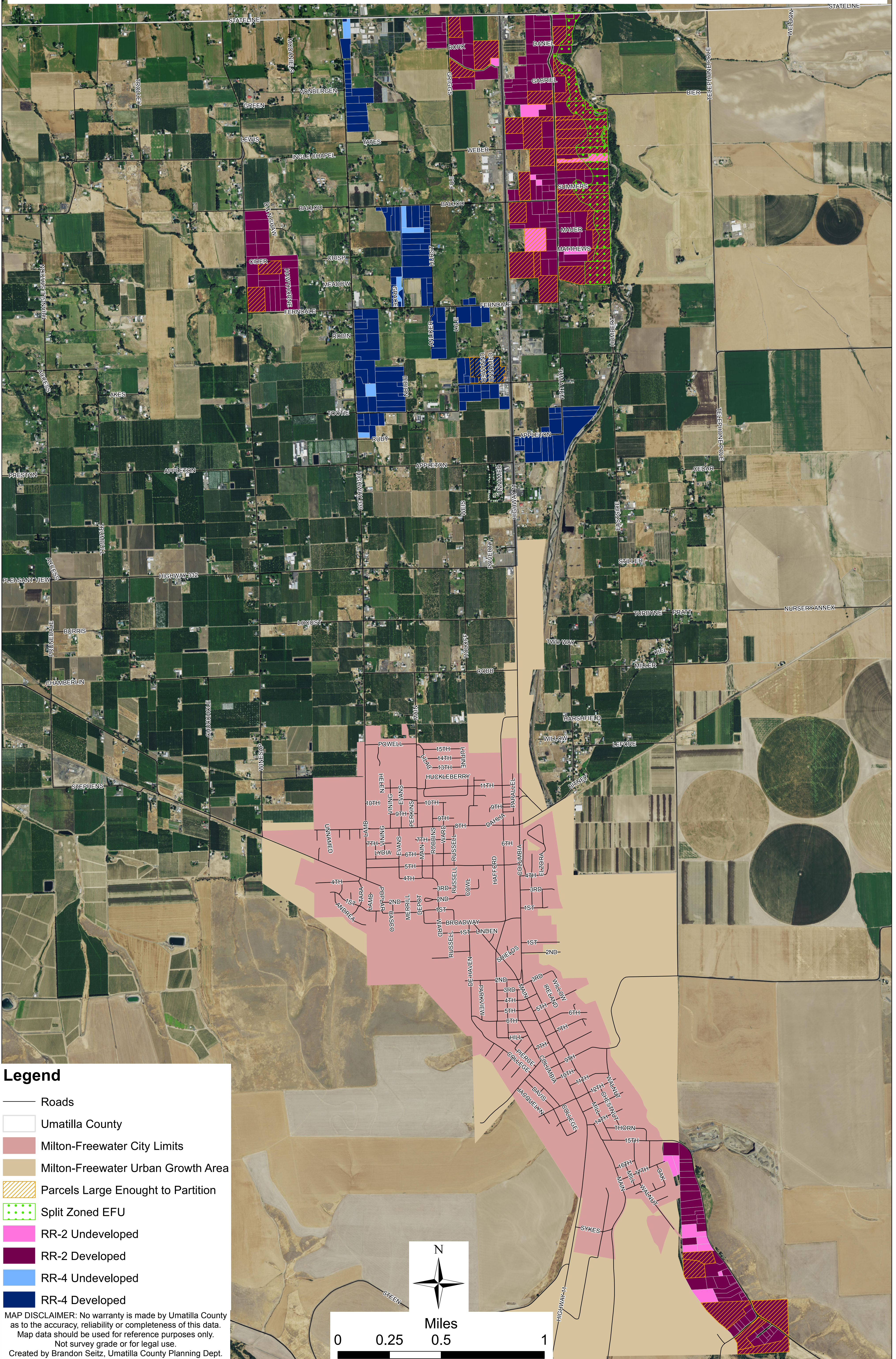


MILTON-FREEWATER RURAL RESIDENTIAL PARCELS



Legend

- Roads
- Umatilla County
- Milton-Freewater City Limits
- Milton-Freewater Urban Growth Area
- ▨ Parcels Large Enough to Partition
- ▤ Split Zoned EFU
- RR-2 Undeveloped
- RR-2 Developed
- RR-4 Undeveloped
- RR-4 Developed

MAP DISCLAIMER: No warranty is made by Umatilla County as to the accuracy, reliability or completeness of this data. Map data should be used for reference purposes only. Not survey grade or for legal use. Created by Brandon Seitz, Umatilla County Planning Dept.

