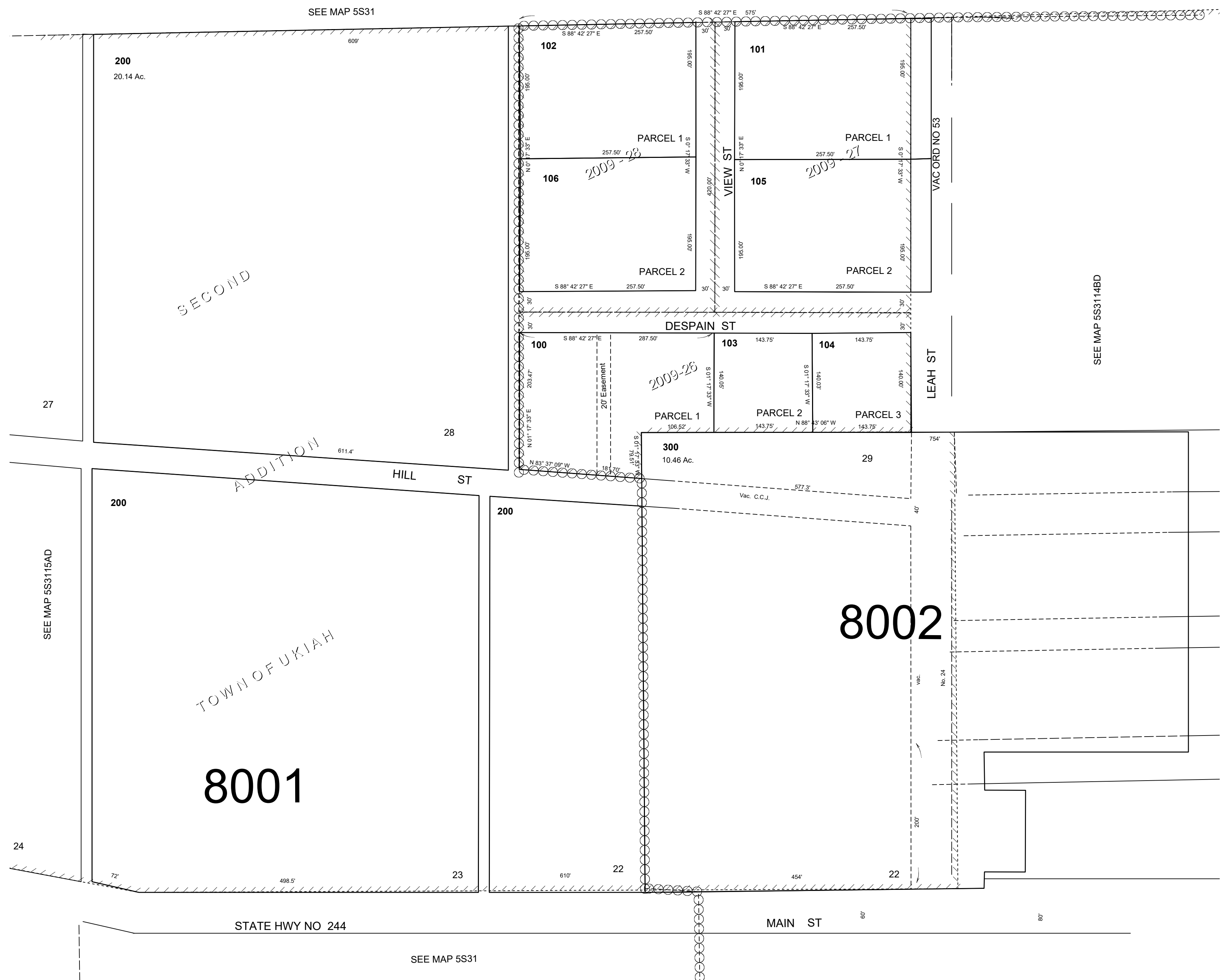


This map was prepared for Assessment & Taxation purposes only and was NOT prepared nor is it suitable for legal, engineering or surveying purposes.

SW 1/4 NW 1/4 SEC 14 T5S R31E WM
UMATILLA COUNTY
SCALE 1"=100'

5S 31 14BC



Revised: 11-18-19

5S 31 14BC