

This map was prepared for Assessment & Taxation purposes only and was NOT prepared nor is it suitable for legal, engineering or surveying purposes.

Cancelled Tax Lots

800
2690
2900

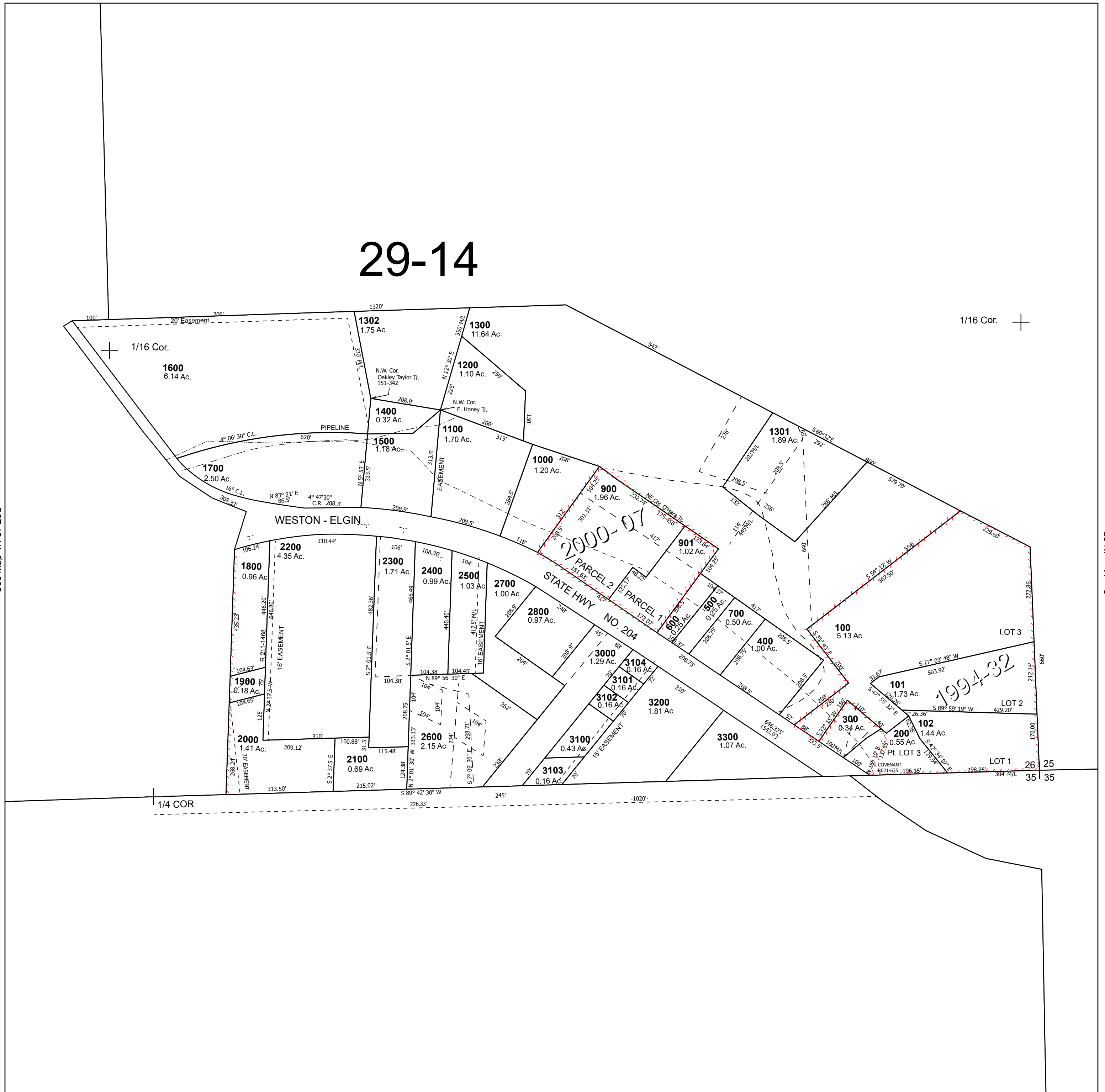
SE 1/4 SEC 26 T4N R37E WM UMATILLA COUNTY

4N 37 26D

SCALE 1" = 200'

See Map 4N 37

29-14



See Map 4N 37 26C

See Map 4N 37

4N 37 26D