

This map was prepared for Assessment & Taxation purposes only and was NOT prepared nor is it suitable for legal, engineering or surveying purposes.

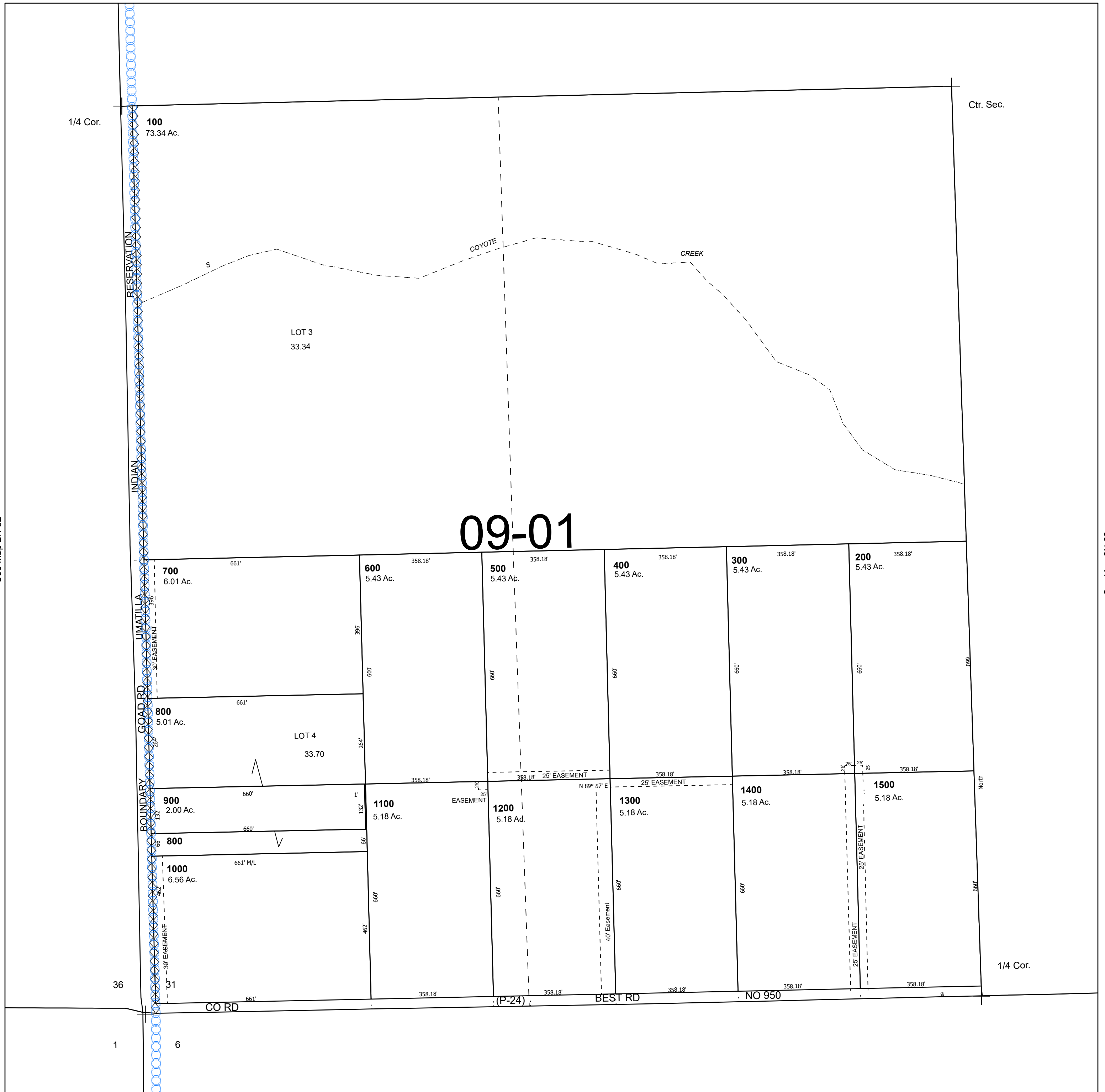
Cancelled Tax Lots

SW 1/4 SEC 31 T2N R33E WM UMATILLA COUNTY

2N 33 31C

SCALE 1" = 200'

See Map 2N 33



Revised 12/2/2024

See Map 1N 33

2N 33 31C