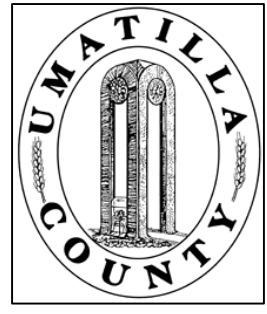


This map was prepared for Assessment & Taxation purposes only and was NOT prepared nor is it suitable for legal, engineering or surveying purposes.



T6N R38E WM UMATILLA COUNTY, OR

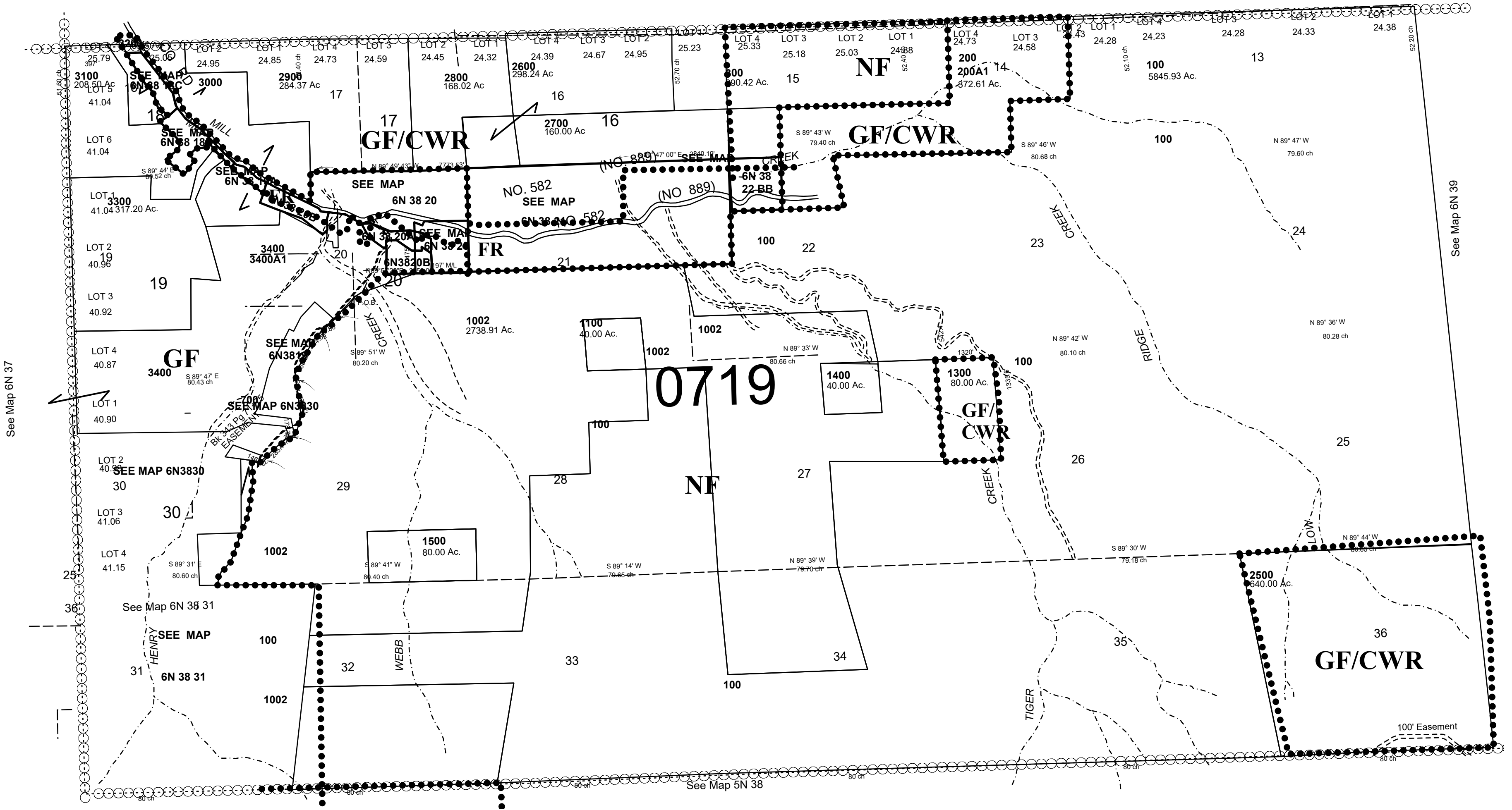
SCALE: 1" = 2000'

6N 38

AERIAL PHOTO NO. NZ-6P-1-6

See FEMA FIRM for areas subject to flooding

WASHINGTON



Revised: 9/2/21

6N 38