

This map was prepared for Assessment & Taxation purposes only and was NOT prepared nor is it suitable for legal, engineering or surveying purposes.

SW 1/4 SE 1/4 SEC 35 T6N R35E WM

1/15/19

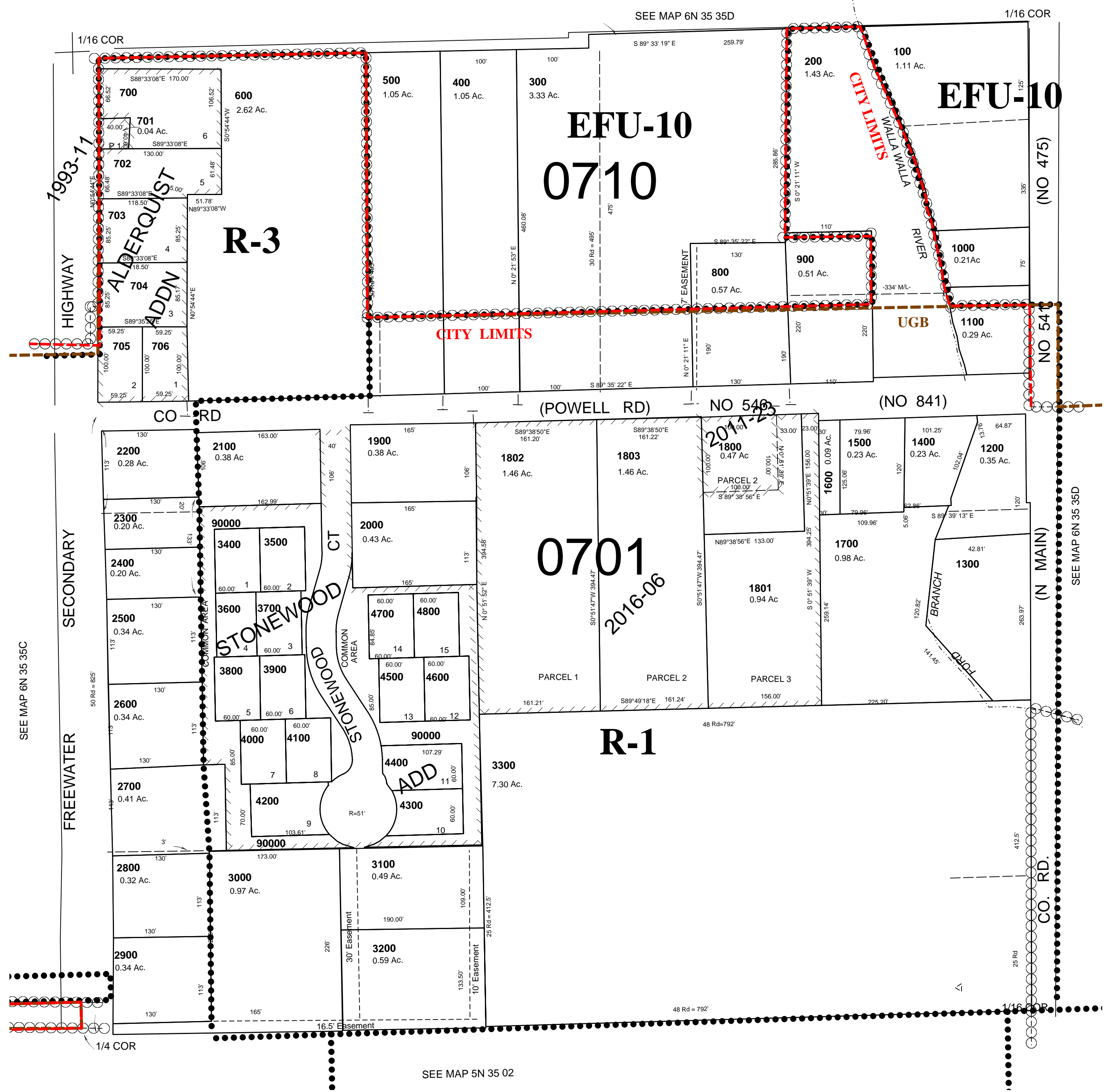
6N 35 35DC

UMATILLA COUNTY

AERIAL PHOTO NO. 6P-53

M-F CITY & URBAN GROWTH AREA

SCALE 1"=100'



6N 35 35DC