

This map was prepared for Assessment and Taxation purposes only and has NOT been prepared for legal, engineering or surveying purposes.

T5S R32E WM UMATILLA COUNTY

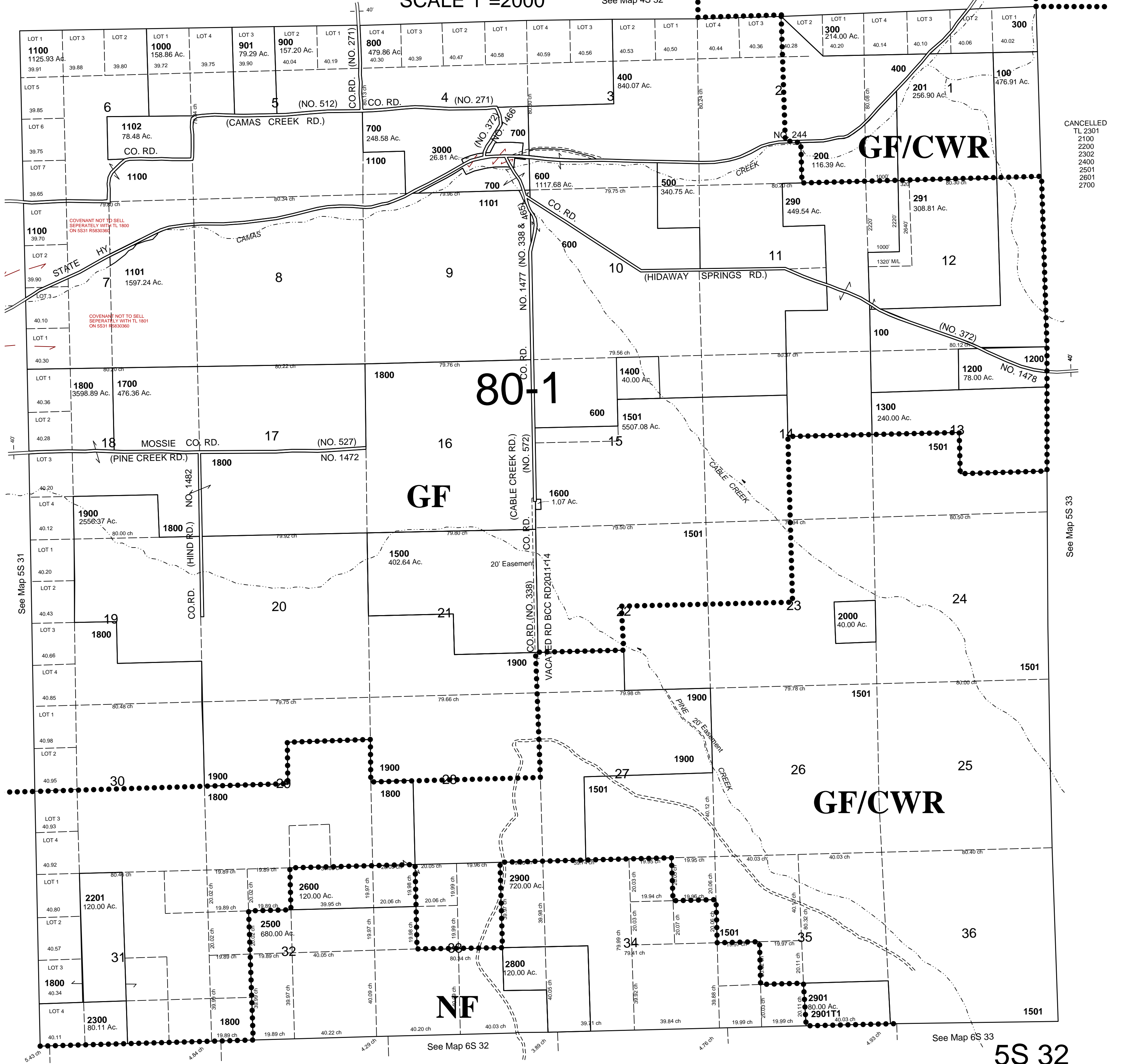
10/18/06

5S 32

AERIAL PHOTO NO. 10P 64-68

SCALE 1"=2000'

See Map 4S 32



CANCELLED
TL 2301
2100
2200
2302
2400
2501
2601
2700

See Map 6S 33

5S 32