

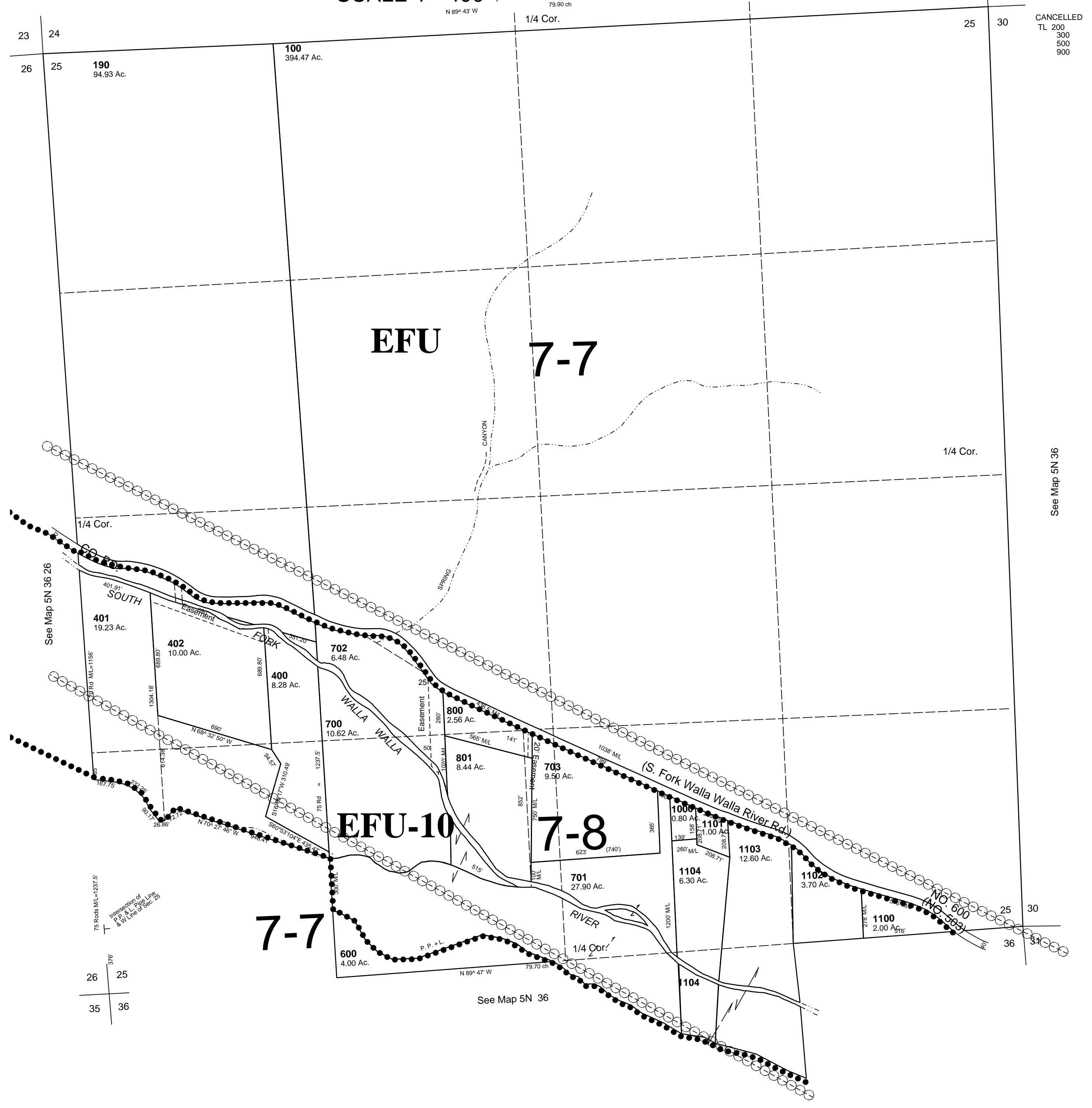
This map was prepared for assessment purposes

SEC 25 T5N R36E WM UMATILLA COUNTY

10/02/06

5N 36 25
AERIAL PHOTO NO, 6P-122

SCALE 1"=400'

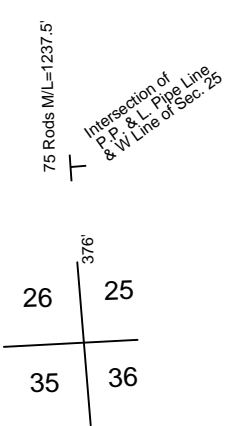


CANCELLED
TL 200
300
500
900

See Map 5N 36

See Map 5N 36 26

See Map 5N 36



5N 36 25