

This map was prepared for Assessment and Taxation purposes only and has NOT been prepared for legal, engineering or surveying purposes.

# NE1/4 NE1/4 SEC 13 T5NR35E WM UMATILLA COUNTY

SCALE 1"=100'

## 5N3513AA

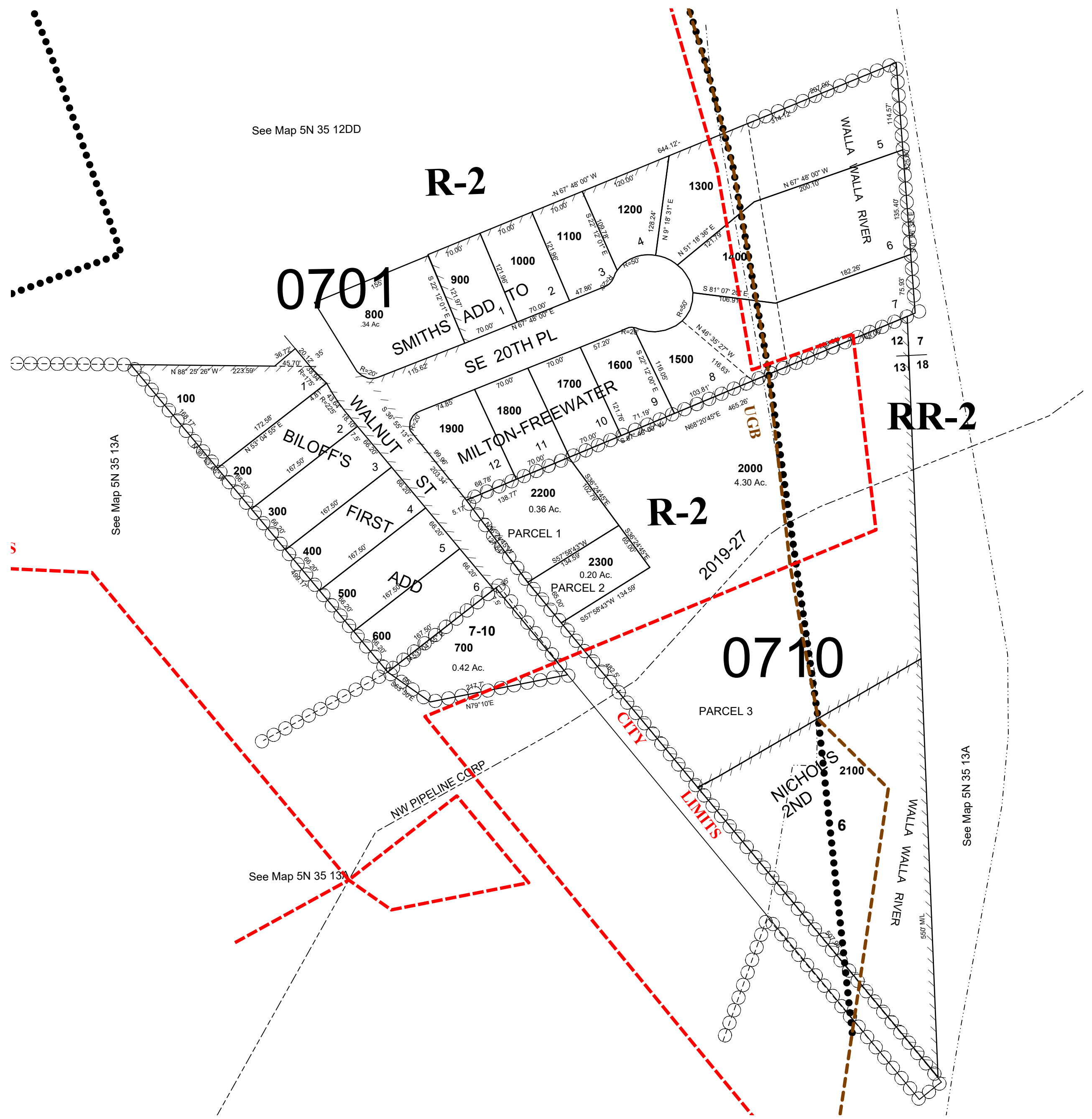
Revised: 04-01-20

BILOFF'S FIRST ADDN  
SMITH'S ADDN

AERIAL PHOTO 6P-119

CITY OF MILTON-FREEWATER

See FEMA FIRM for areas subject to flood



## 5N3513AA