

This map was prepared for Assessment & Taxation purposes only and has NOT been prepared for legal, engineering or surveying purposes.

Sec 13 T5N R35E WM UMATILLA COUNTY

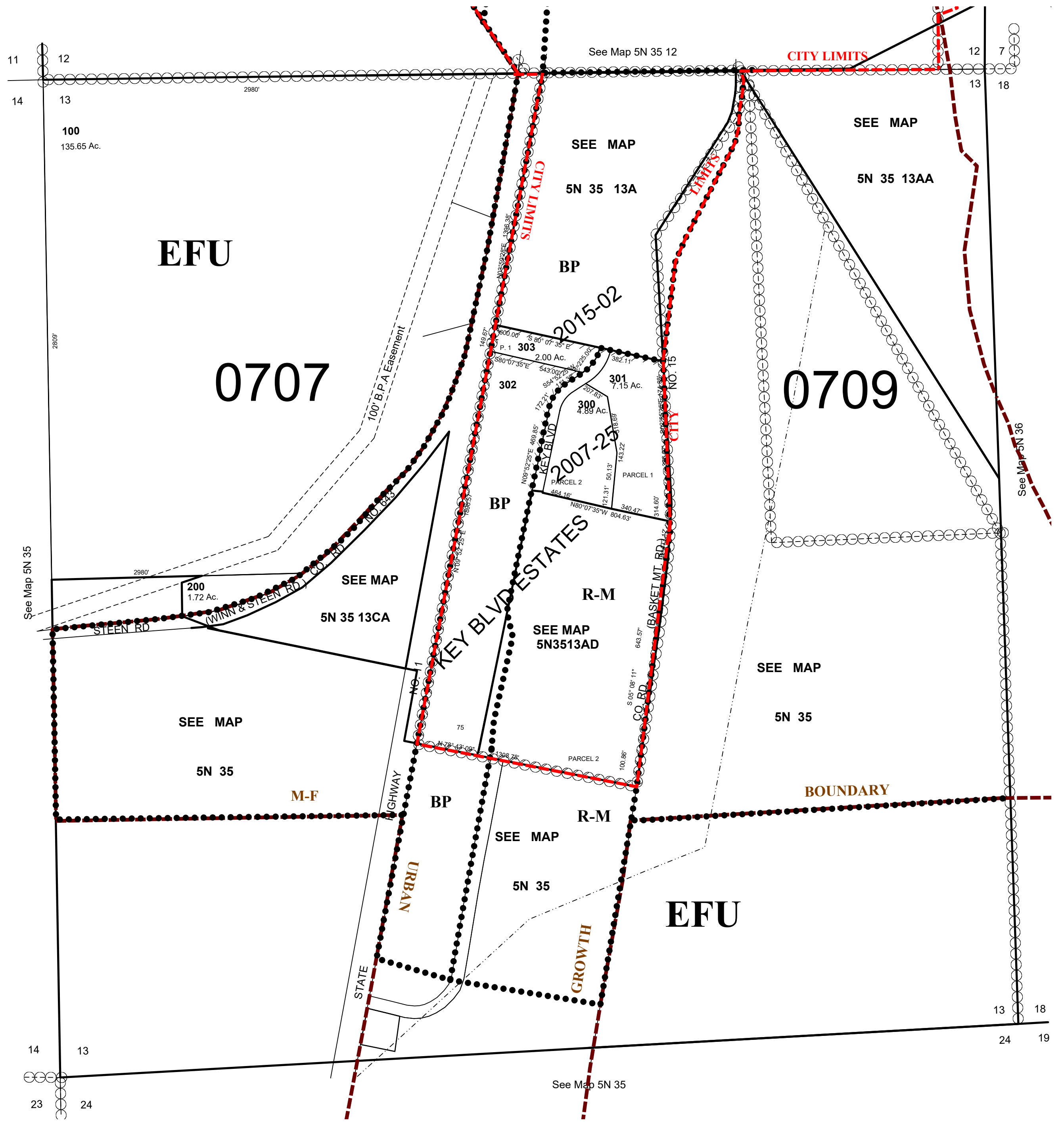
05/07/2020

5N 35 13

AERIAL PHOTO NO 11P-82
6P-119

M-F City & Urban Growth Area

SCALE 1"=400'



5N 35 13