

This map was prepared for Assessment & Taxation purposes only and has NOT been prepared for legal, engineering or surveying purposes.

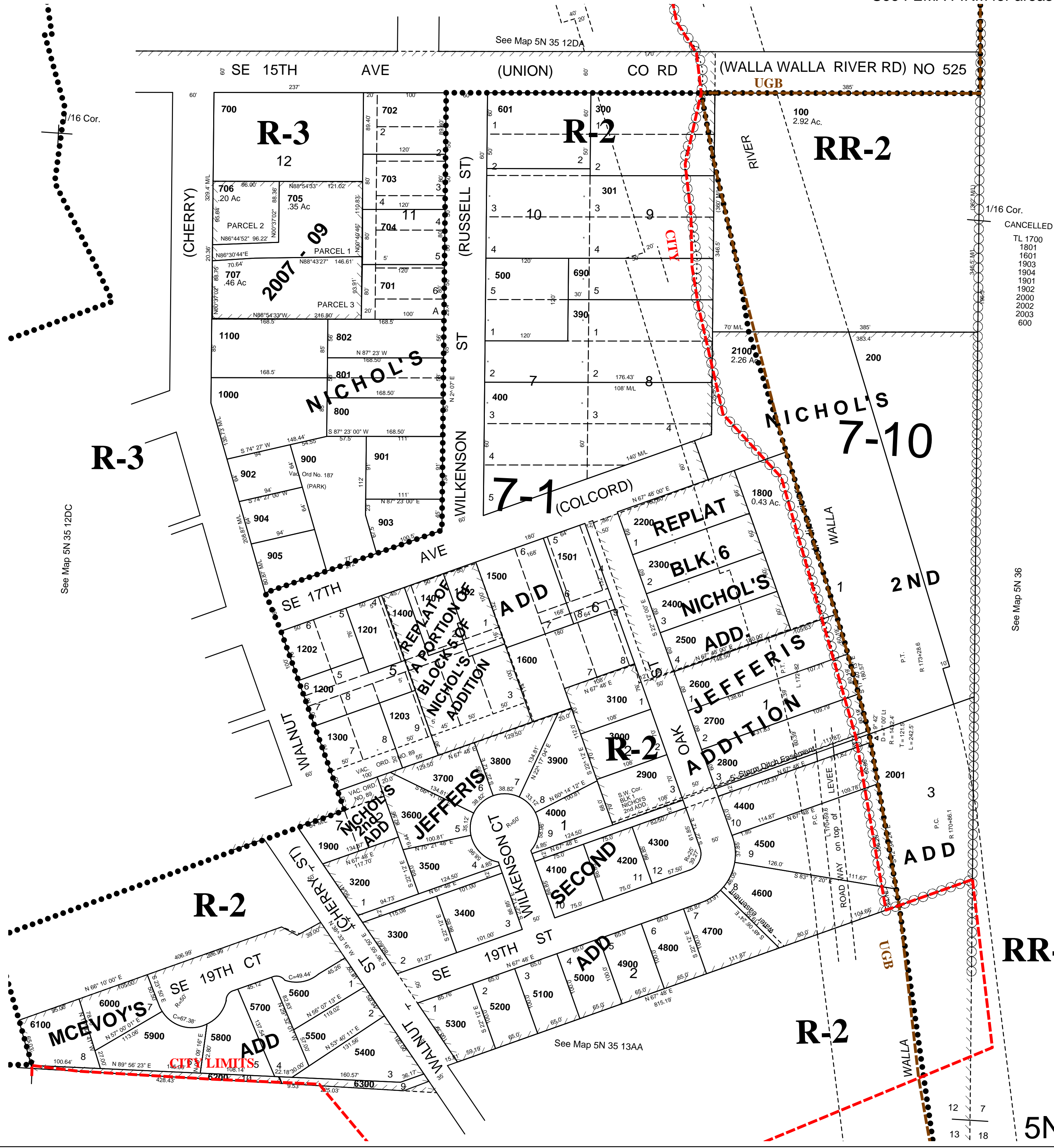
# SE1/4 SE1/4 SEC 12 T5N R35E WM UMATILLA COUNTY

4/18/07

1"=100'

5N 35 12DD  
AERIAL PHOTO NO 11P-82

Milton-Freewater City & Urban Growth Area  
See FEMA FIRM for areas subject to flooding



1/16 Cor.  
CANCELLED  
TL 1700  
1801  
1801  
1903  
1904  
1901  
1902  
2000  
2002  
2003  
600

See Map 5N 35 36

5N 35 12DD