

This map was prepared for assessment purposes

NW1/4 NE1/4 SEC 12 T5N R35E WM UMATILLA COUNTY

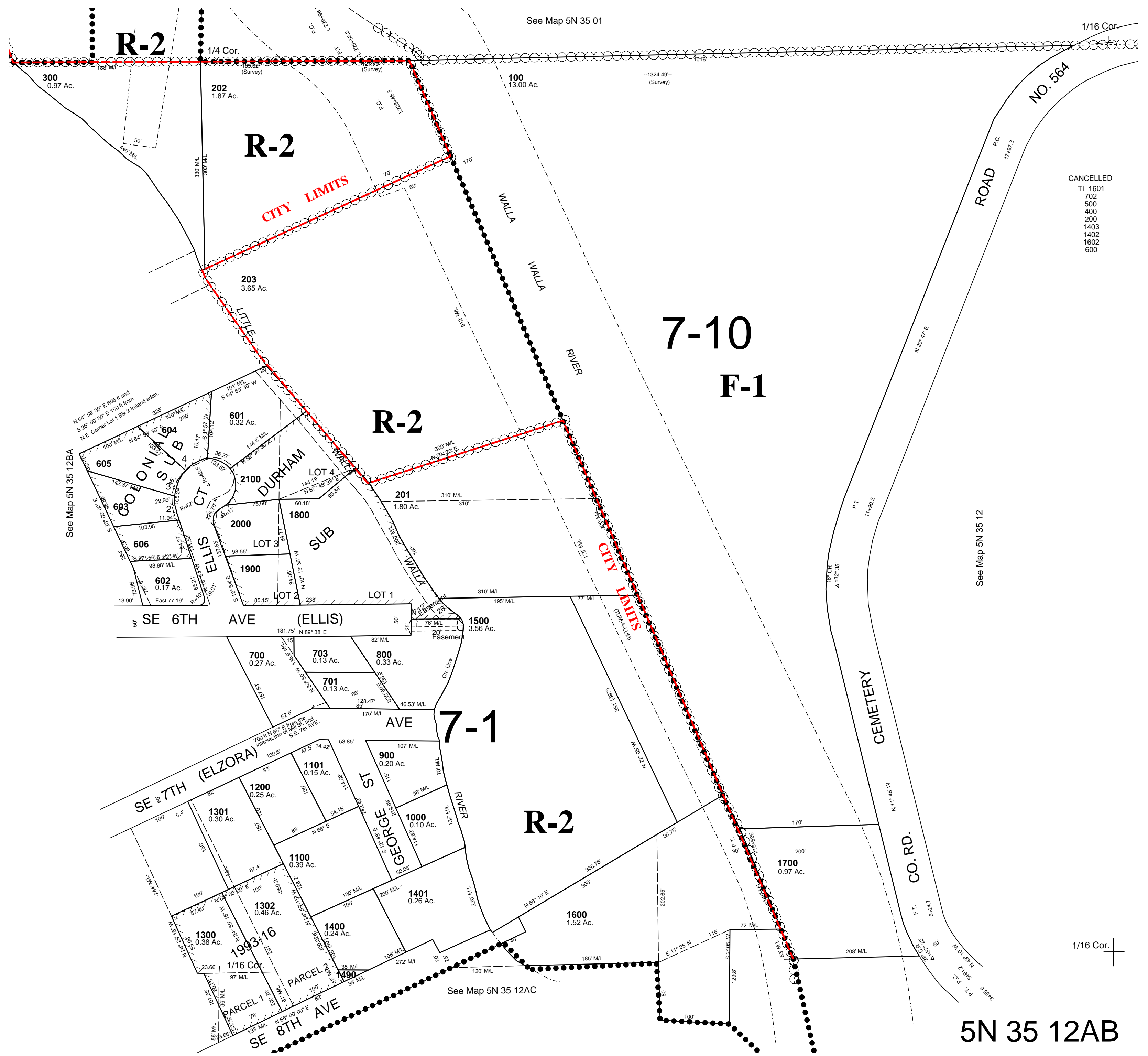
SCALE 1"=100'

4/6/06

5N 35 12AB

AERIAL PHOTO NO. 11P-82

M-F CITY & URBAN GROWTH AREA
See FIRM for areas subject to flooding



CANCELLED
 TL 1601
 702
 500
 400
 200
 1403
 1402
 1602
 600

5N 35 12AB