

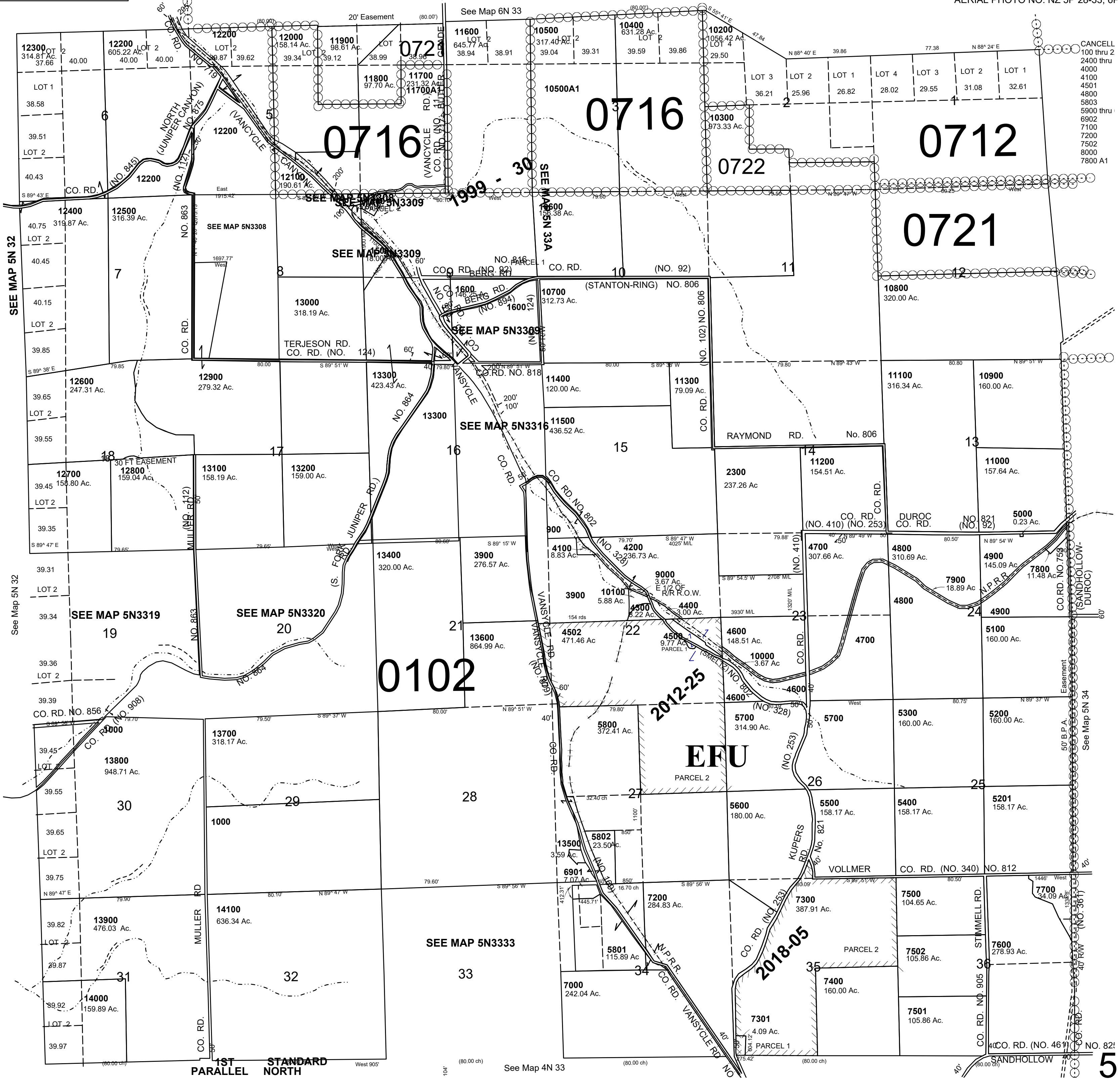
This map was prepared for assessment purposes

T5N R33E WM
UMATILLA COUNTY 1"=2000'

9/15/21

5N 33 &
INDEX

AERIAL PHOTO NO. NZ 5P 28-33, 6P 86-90 & 103-107



CANCEL
100 thru 2
2400 thru
4000
4100
4501
4800
5803
5900 thru
6902
7100
7200
7502
8000
7800 A1

5N 33