

This map was prepared for assessment purposes

# SE1/4 NE1/4 SEC 14 T5N R29E WM UMATILLA COUNTY

3/23/05

## 5N 29 14AD

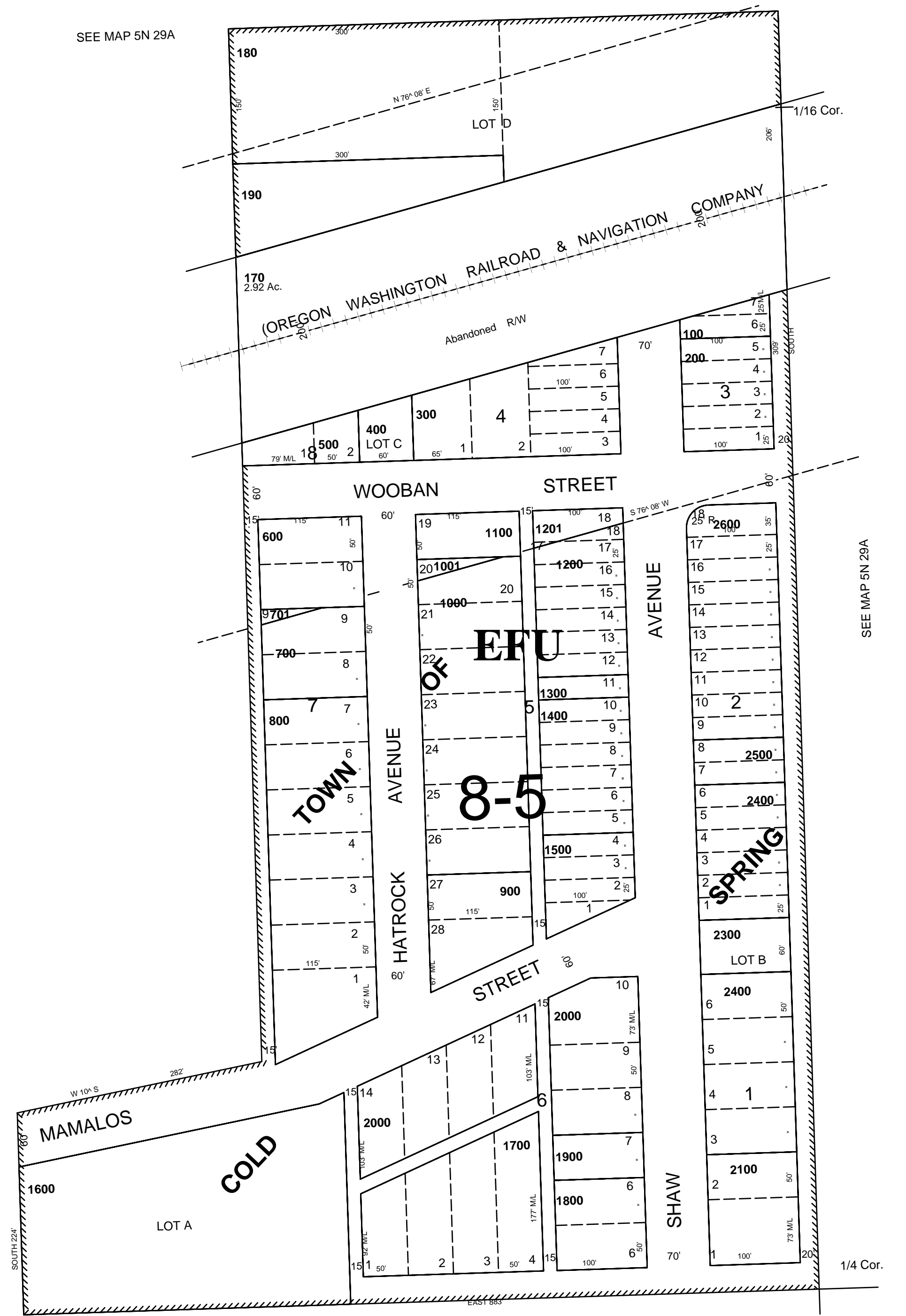
AERIAL PHOTO NO. 1P-65

1"=100'

1/16 Cor.

SEE MAP 5N 29A

See Map 5N 29A



SEE MAP 5N 29A

1/16 Cor.

SEE MAP 5N 29A

## 5N 29 14AD