

This map was prepared for assessment purposes

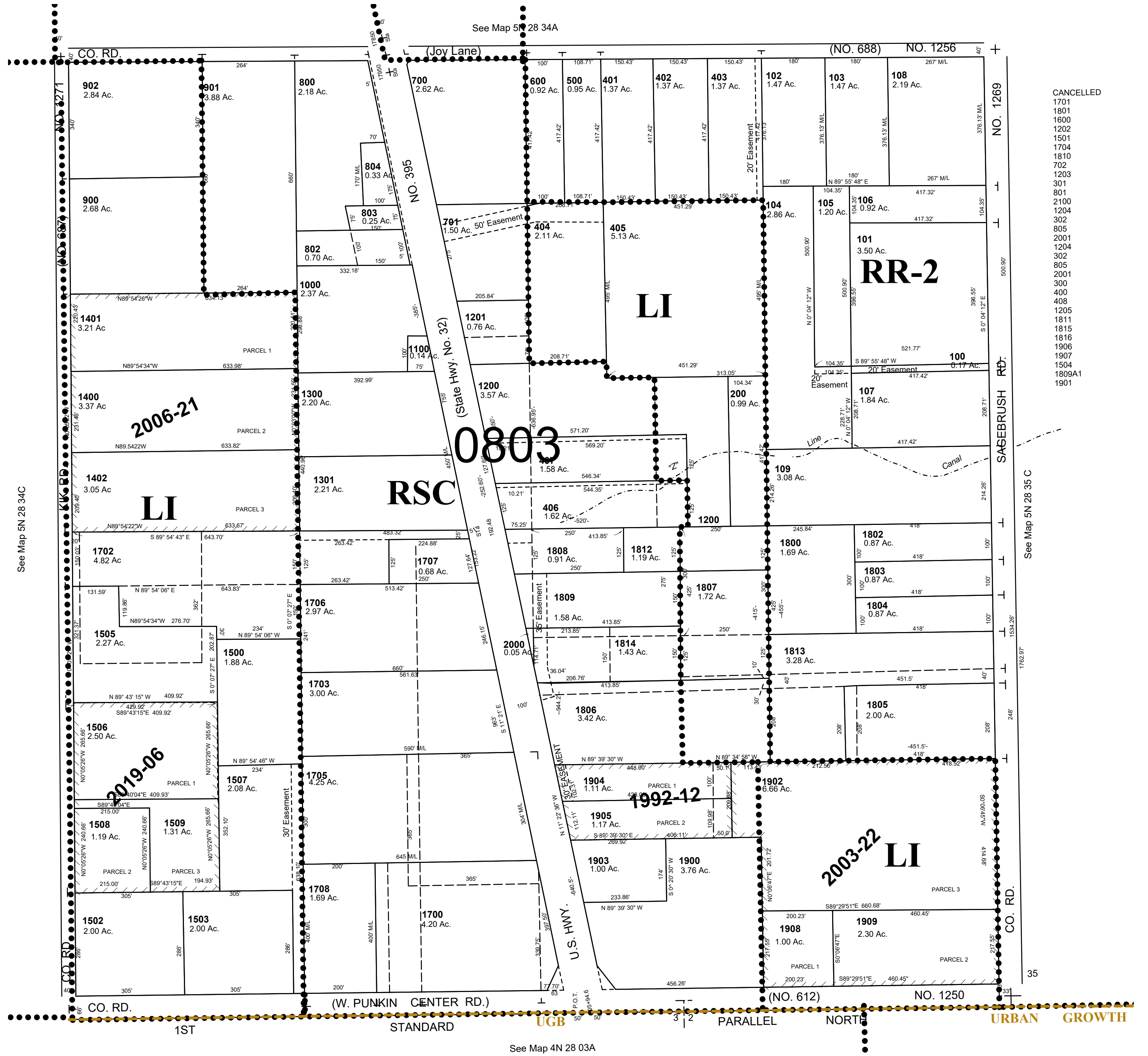
04/01/219

SE1/4SEC 34 T5NR28E WM

5N2834D

UMATILLA COUNTY

1"=200'



CANCELLED
 1701
 1801
 1800
 1202
 1704
 1810
 1203
 301
 2100
 1204
 302
 805
 2001
 1204
 302
 805
 2001
 300
 400
 408
 1811
 1815
 1816
 1906
 1907
 1504
 1809A1
 1901

See Map 5N 28 35 C

See Map 4N 28 03A

5N2834D