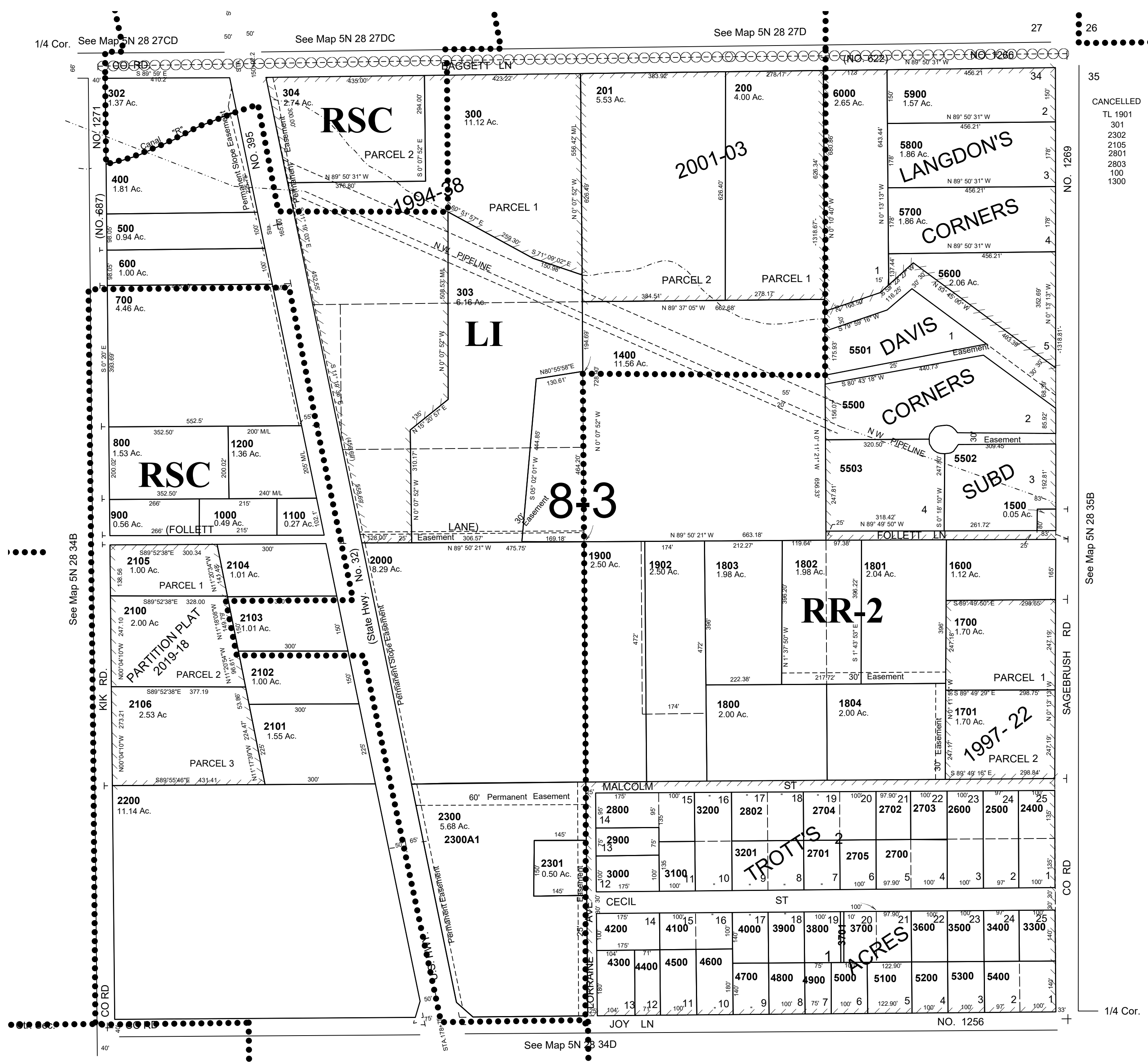


This map was prepared for assessment purposes

NE 1/4 SEC 34 T5N R28E WM UMATILLA COUNTY SCALE 1"=200'

03/31/2020

5N 28 34A
AERIAL PHOTO NO. NZ 1P-104



CANCELLED
TL 1901
301
2302
2105
2803
100
1300

See Map 5N 28 35B

5N 28 34A