

This map was prepared for Assessment & Taxation purposes only and was NOT prepared nor is it suitable for legal, engineering or surveying purposes.

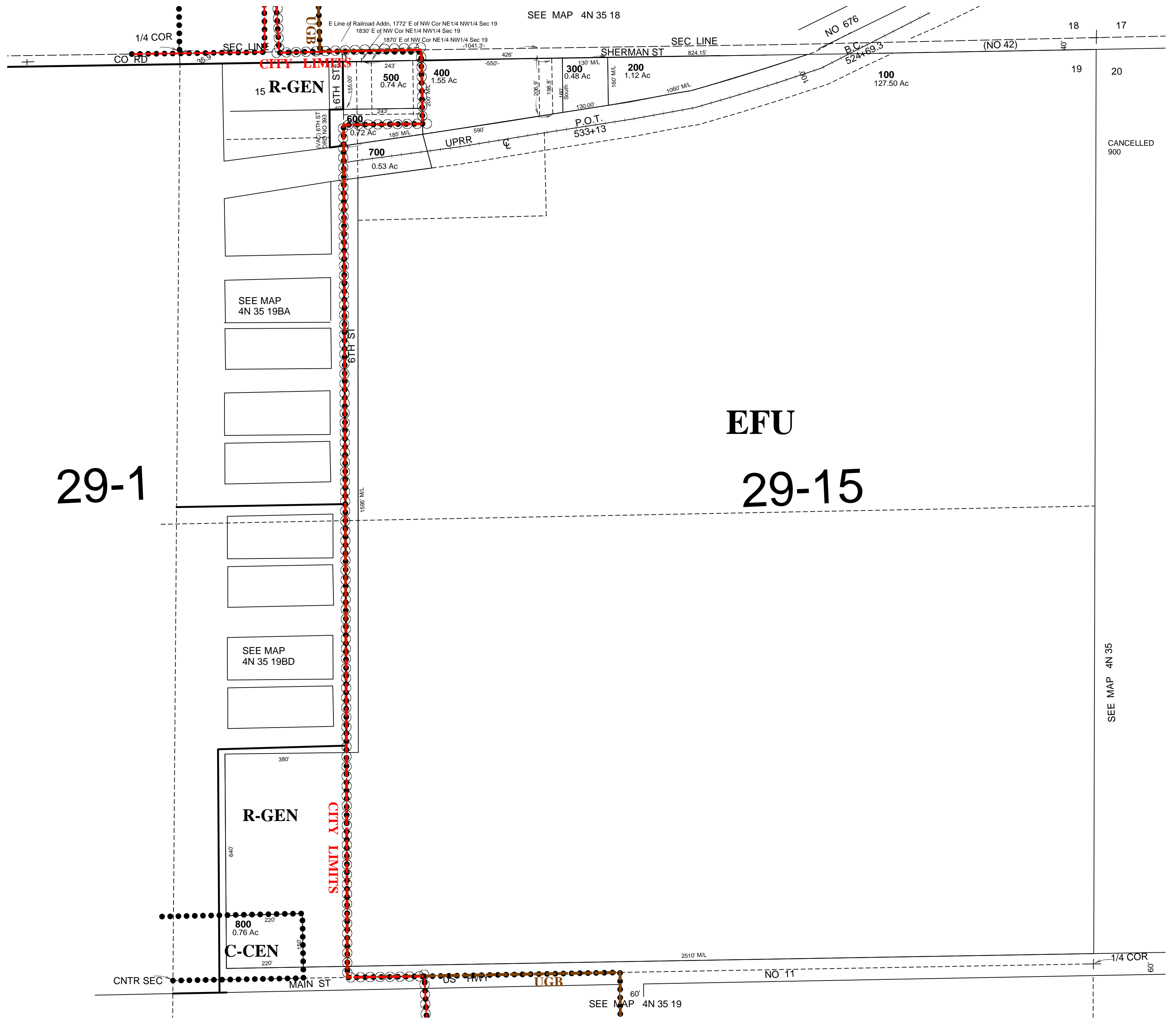
# NE1/4 SEC 19 T4N R35E WM

## UMATILLA COUNTY

SCALE 1" = 200'

### 4N 35 19A

AERIAL PHOTO NO 5P-99



29-1

EFU

29-15

Revised: 9/2/10

### 4N 35 19A