

This map was prepared for assessment purposes

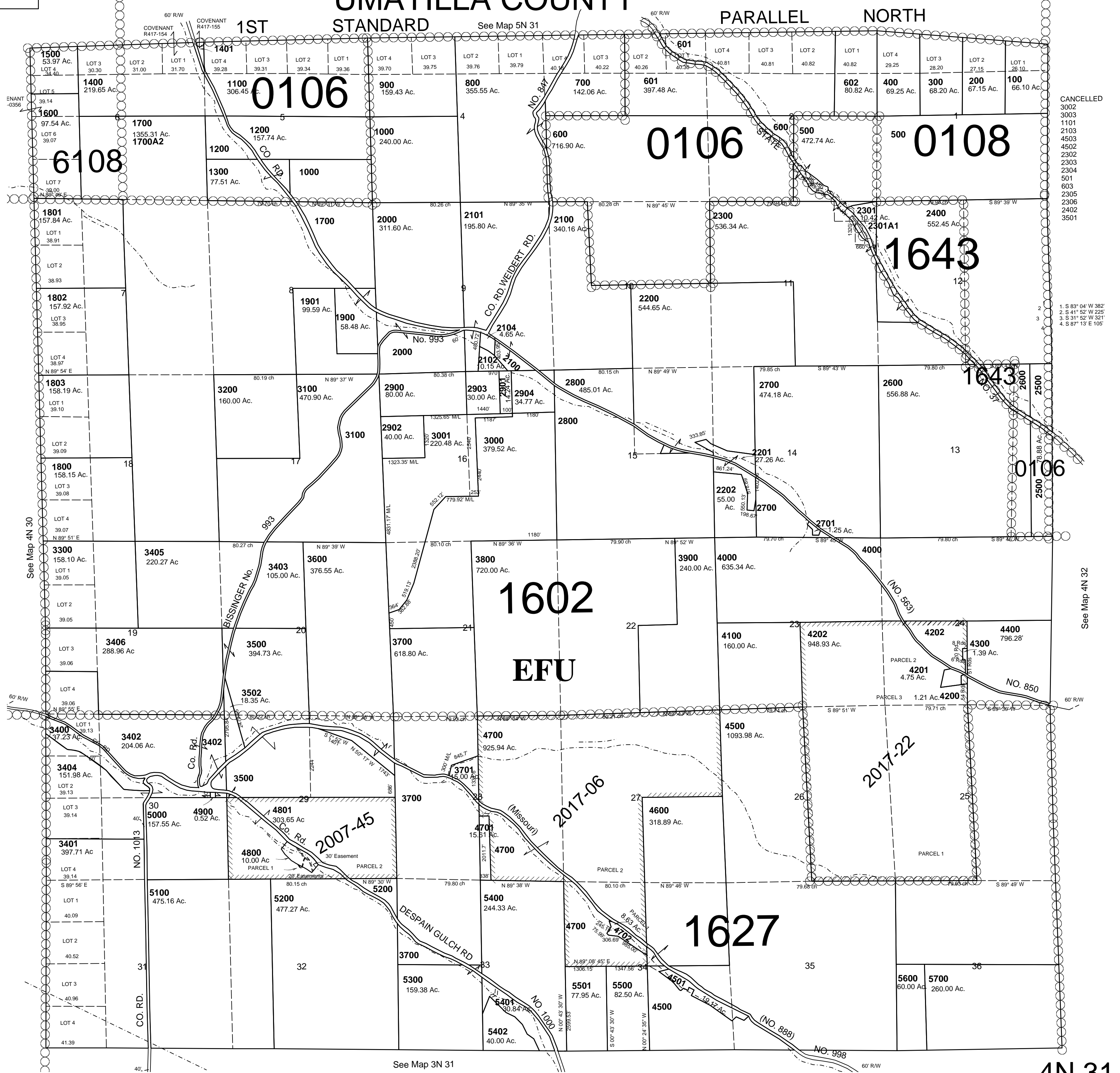
SCALE 1"=2000'

T4N R31E WM UMATILLA COUNTY

7-7-06

4N 31

AERIAL PHOTO NO. NZ 1P-136-142, 2P 3-9 & 56-62



CANCELLED
3002
3003
1101
2103
4503
4503
2302
2303
2304
501
603
2305
2306
2402
3501

1. S 89° 04' W 382'
2. S 41° 52' W 225'
3. S 31° 52' W 321'
4. S 87° 13' E 105'

See Map 4N 30

See Map 4N 32

See Map 3N 31

4N 31