

This map was prepared for assessment purposes

NE1/4 SE1/4 SEC 32 T4N R29E WM UMATILLA COUNTY

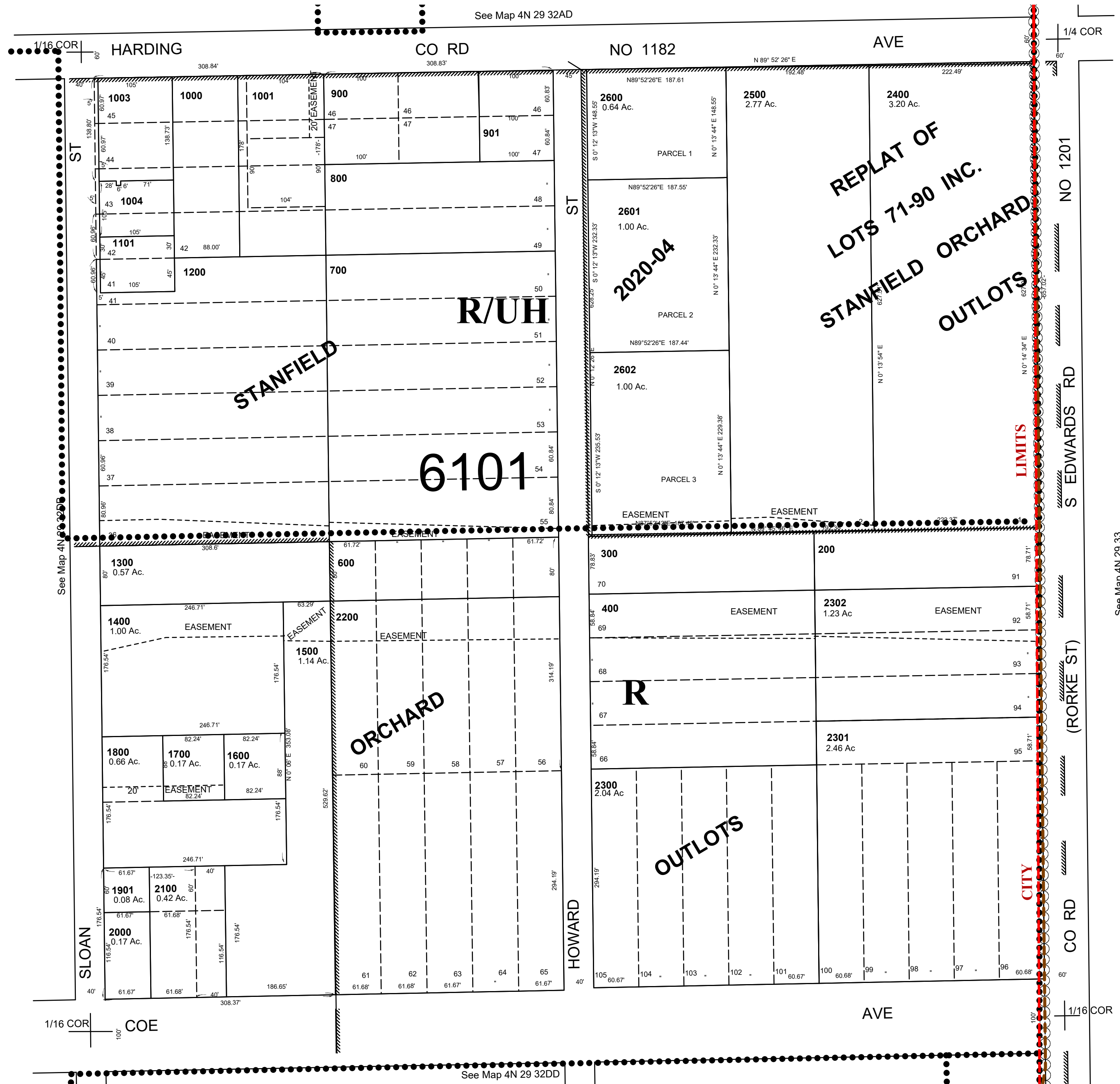
1"=100'

4/1/20

4N 29 32DA

AERIAL PHOTO NO. NZ 2P-44
CITY OF STANFIELD

See FEMA FIRM for areas subject to flooding



4N 29 32DA