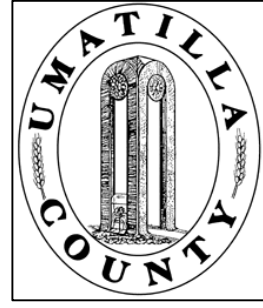


This map was prepared for Assessment purposes only.



SEC 17 T4N R29E WM UMATILLA COUNTY, OR

1/11/19

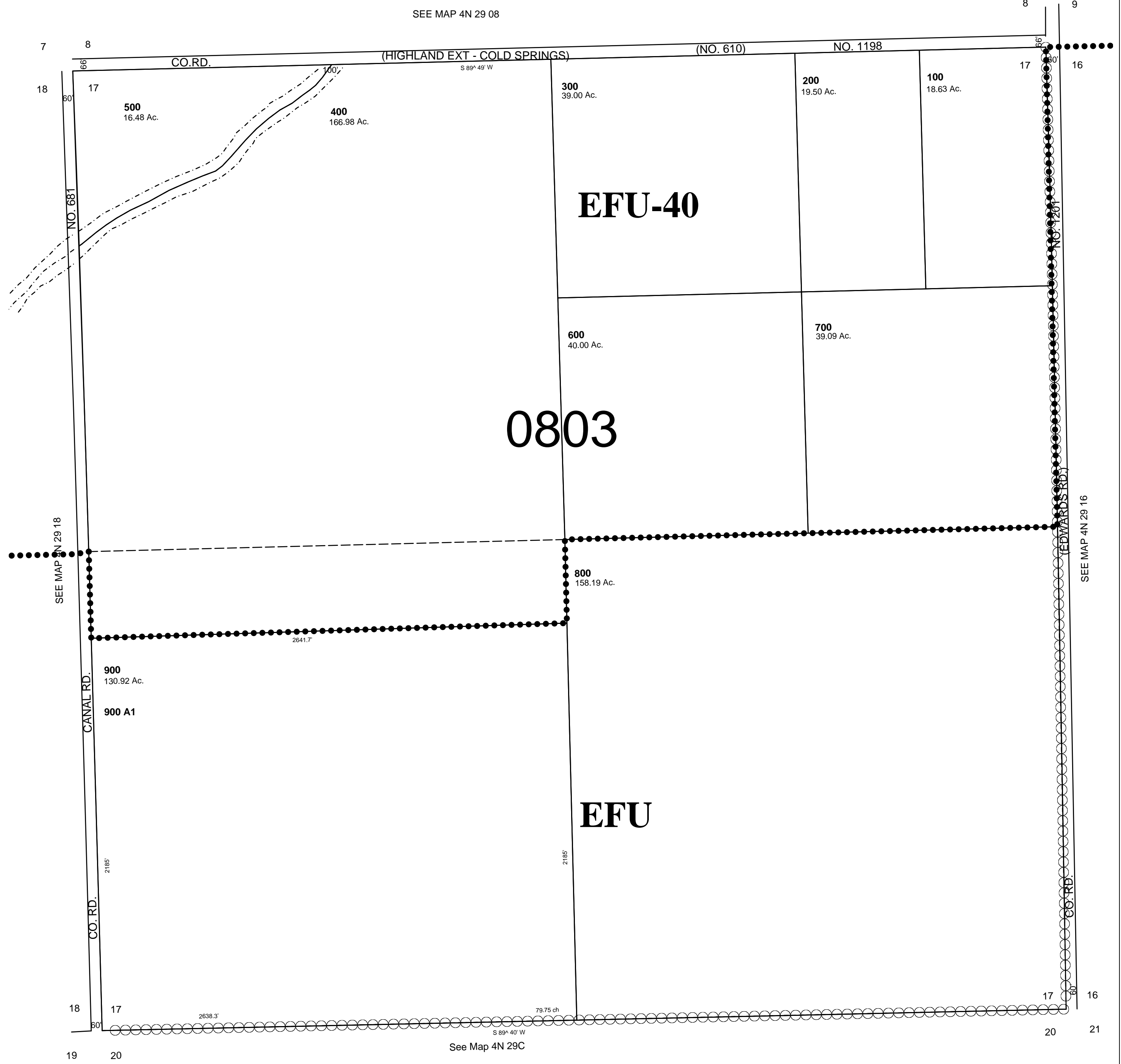
4N 29 17

AERIAL PHOTO NO. N22P 18-20 & 1P 124-126

SCALE: 1" = 400'

All in Stage Gulch Critical Ground Water Area

All in AH-H



4N 29 17