

This map was prepared for assessment purposes

SW 1/4 SEC 7 T4N R29E WM
UMATILLA COUNTY

11/20/06

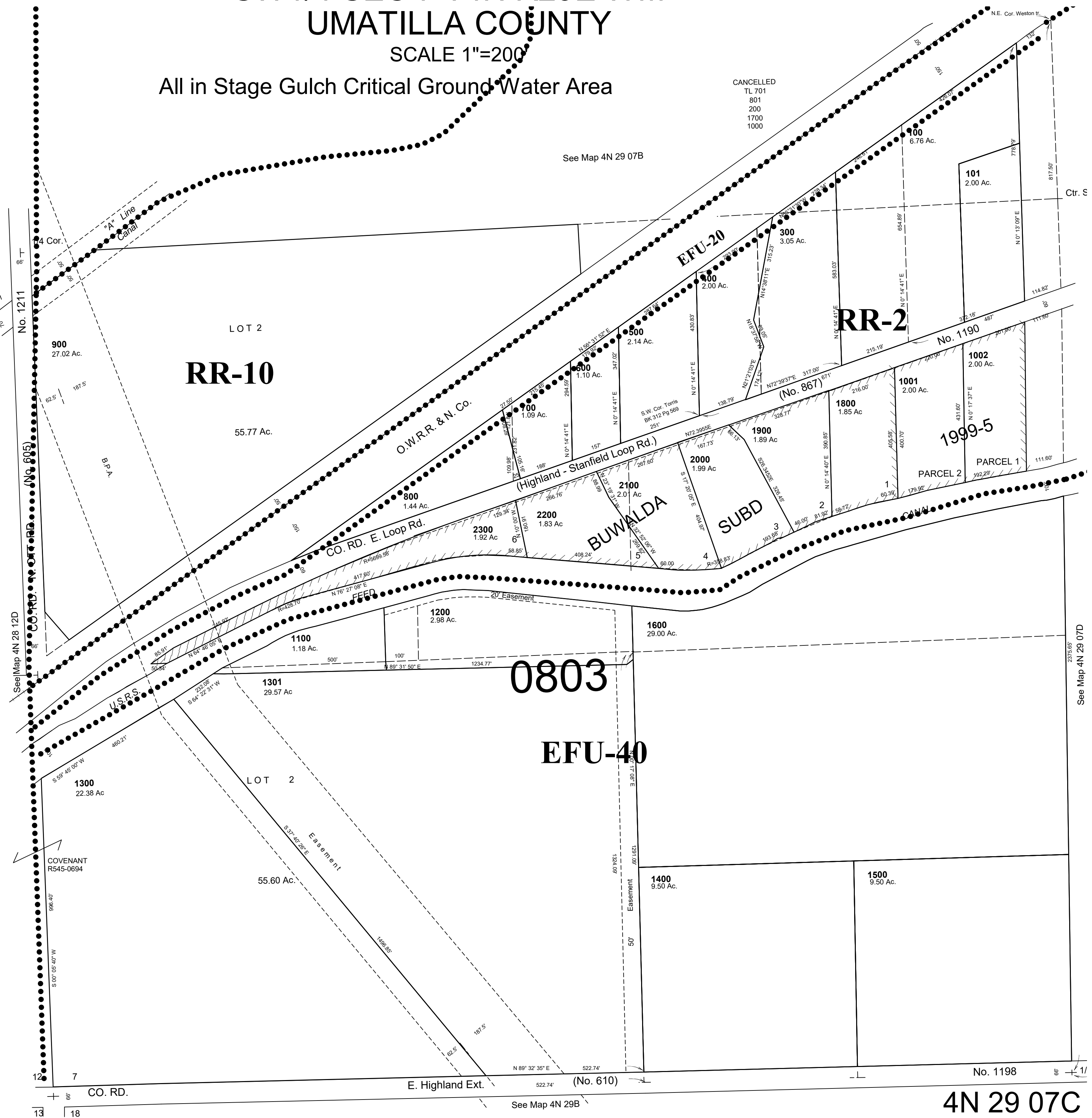
4N 29 07C

SCALE 1"=200'

All in Stage Gulch Critical Ground Water Area

See Map 4N 29 07B

CANCELLED
TL 701
801
200
1700
1000



See Map 4N 29 07D

See Map 4N 29 07B

No. 1198
4N 29 07C