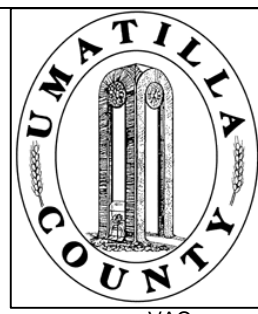


This map was prepared for Assessment purposes only.



SCALE: 1" = 1000'

NW1/4 T4N R28E WM UMATILLA COUNTY, OR

4/26/05

4N 28B

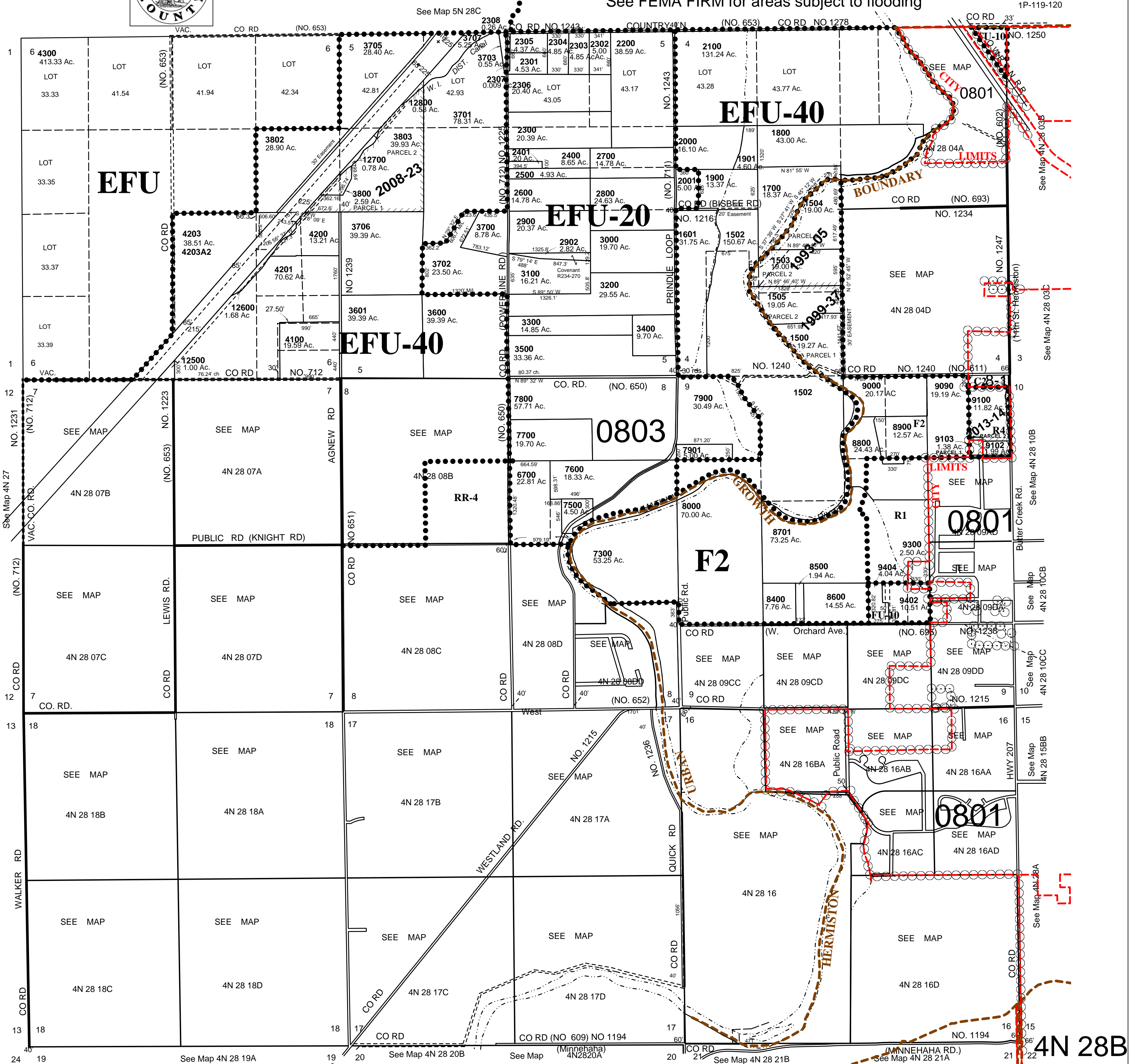
HERMISTON CITY & UGA

All in Critical Ground Water Areas

See FEMA FIRM for areas subject to flooding

1P-119-120

- CANCELLED NOS
- 100 thru 800
- 900 thru 907
- 1000 thru 1404
- 1501
- 1600
- 2002
- 2402
- 2901
- 3704
- 3901
- 3900
- 4000 thru 4001
- 4101
- 4202
- 4204 thru 4205
- 4301
- 4400 thru 5990
- 6000 thru 6010
- 6100 thru 6601
- 6800 thru 7206
- 7400
- 8100 thru 8303
- 8700
- 8702 thru 8703
- 8801
- 9101
- 8200
- 9400 thru 9401
- 9403
- 9405 thru 9600
- 9700 thru 10501
- 10601 thru 12400



4N 28B