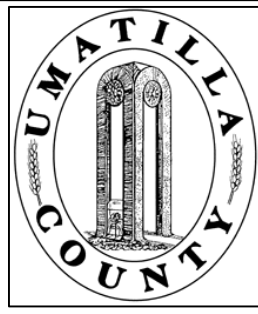


This map was prepared for Assessment purposes only.



SEC 31 T4N R28E WM UMATILLA COUNTY, OR

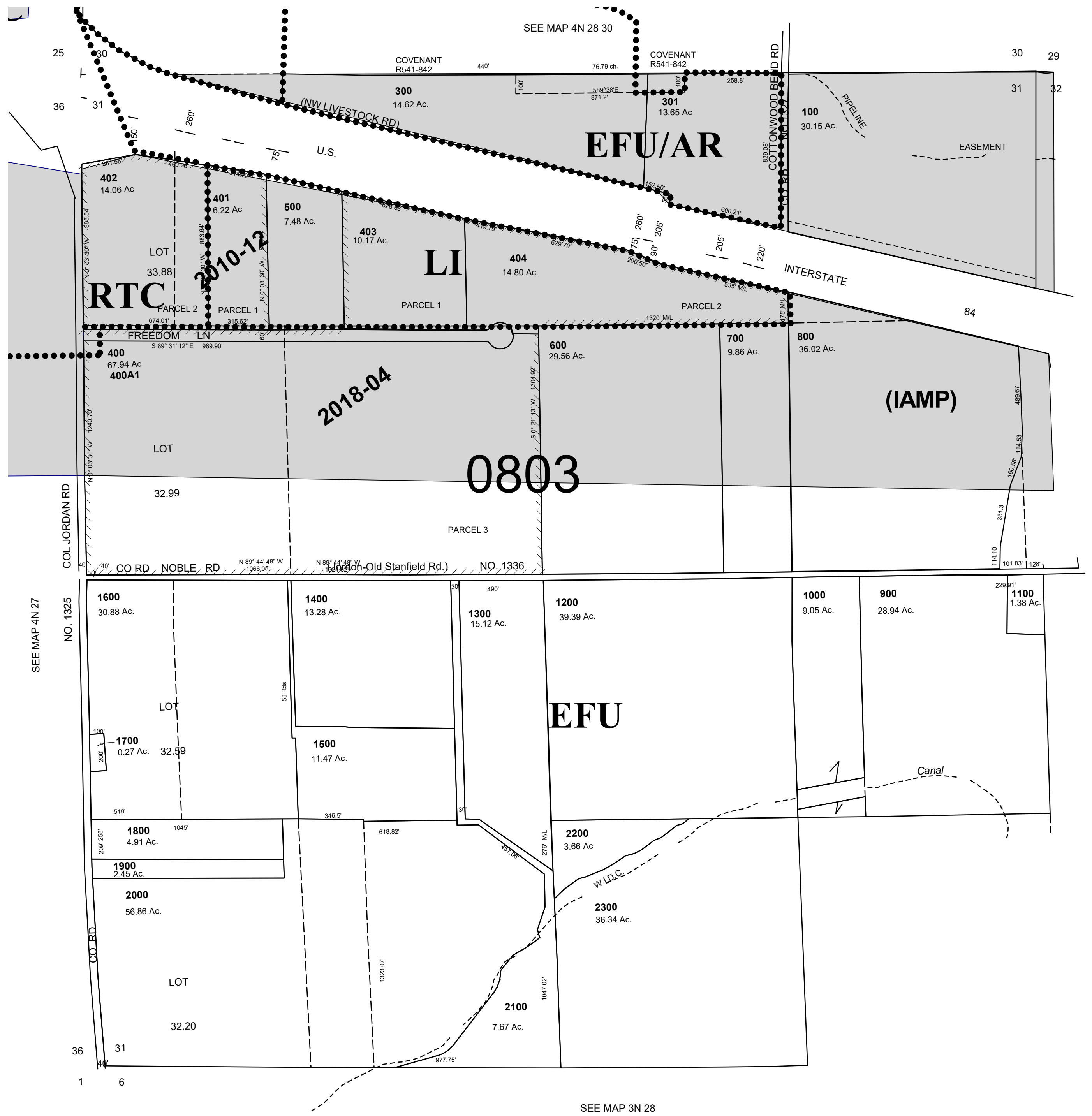
12/02/20

4N 28 31

AERIAL PHOTO NO. NZ-2P-25 & 26

All in Butter Creek/Ordance Gravel CGWater Area
Westland Rd/I-84/I-82 Interchange Area Management Plan

SCALE: 1" = 400'



SEE MAP 3N 28

4N 28 31