

This map was prepared for assessment purposes

SE1/4 SEC 19 T4N R28E WM

05/09/2021

4N 28 19D

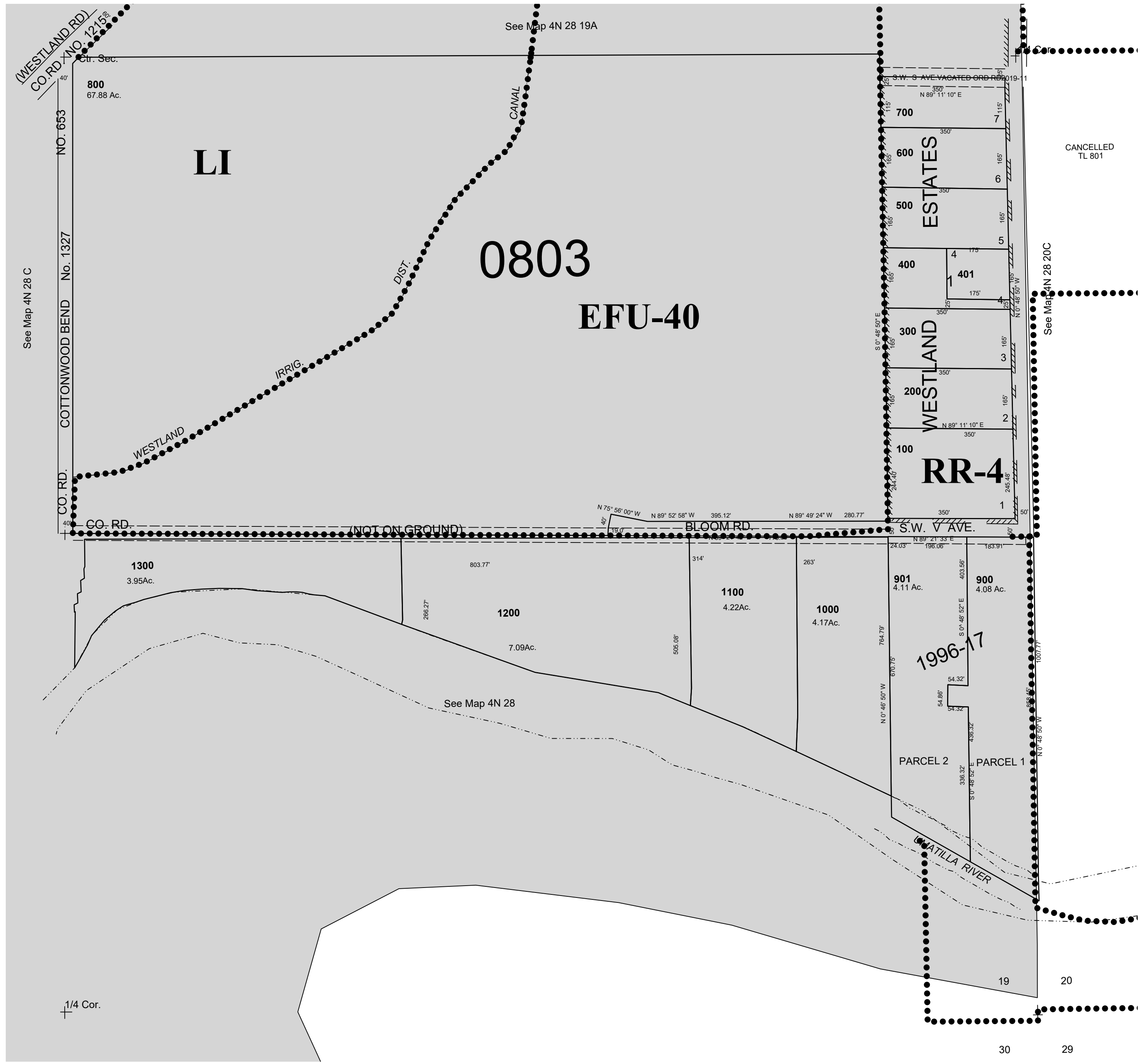
UMATILLA COUNTY

AERIAL PHOTO NO. 2P-26

SCALE 1"=200'

See FIRM for areas subject to flooding

All in Butter Creek/Ordance Gravel Critical Ground Water Area



4N 28 19D