

This map was prepared for Assessment purposes only.

NW14/ NE1/4 SEC 16 T 4N R 28E WM UMATILLA COUNTY, OR

4/29/04

4N 28 16AB

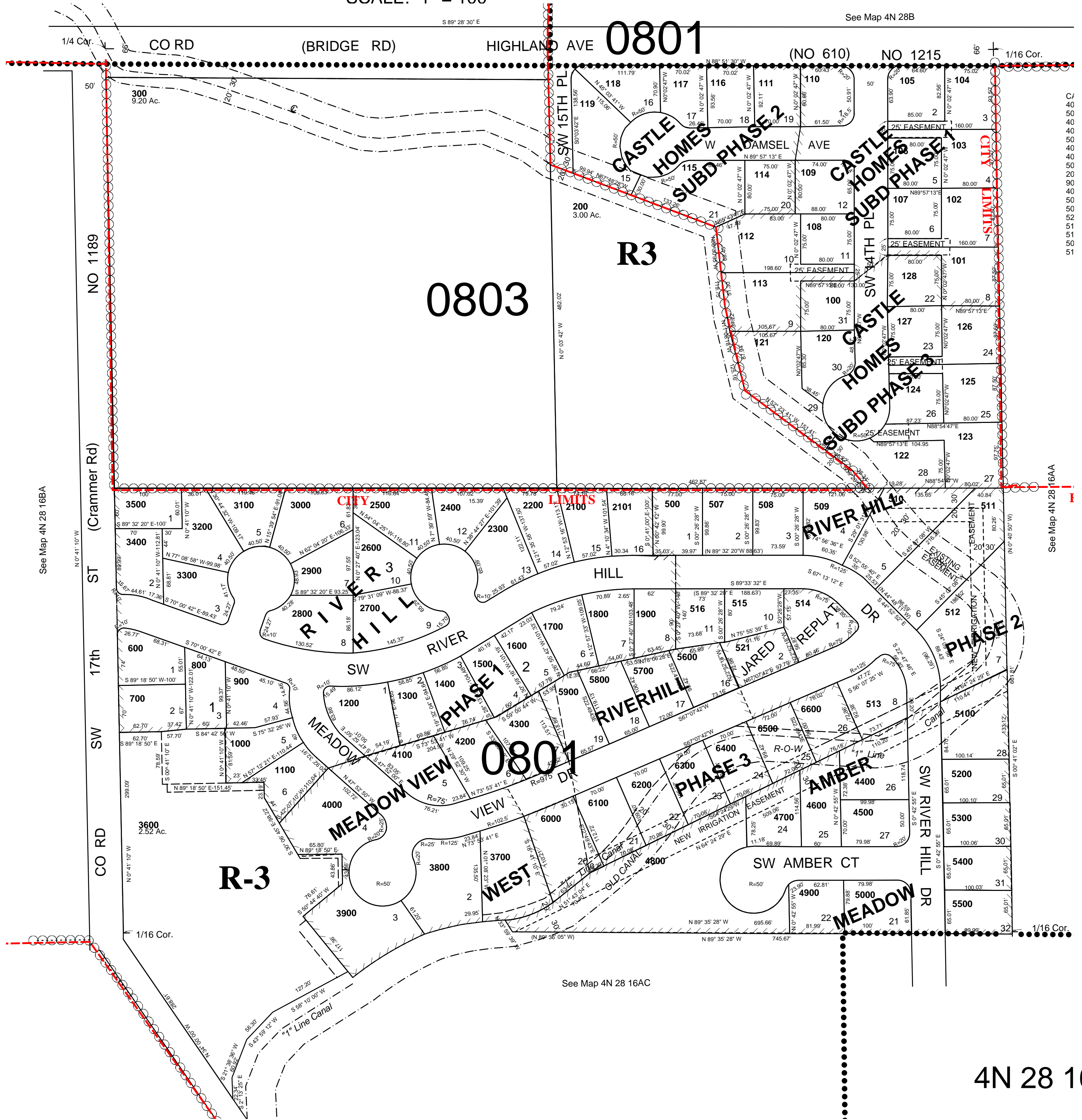
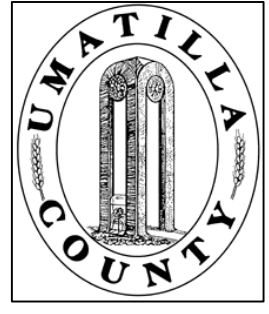
AERIAL PHOTO NO. NZ-2P-25

HERMISTON CITY & URBAN GROWTH AREA

All in Butter Creek Critical Ground Water Area

SCALE: 1" = 100'

See Map 4N 28B



4N 28 16AB