

This map was prepared for assessment purposes

NE1/4 NE1/4 SEC 16 T4N R28E WM UMATILLA COUNTY

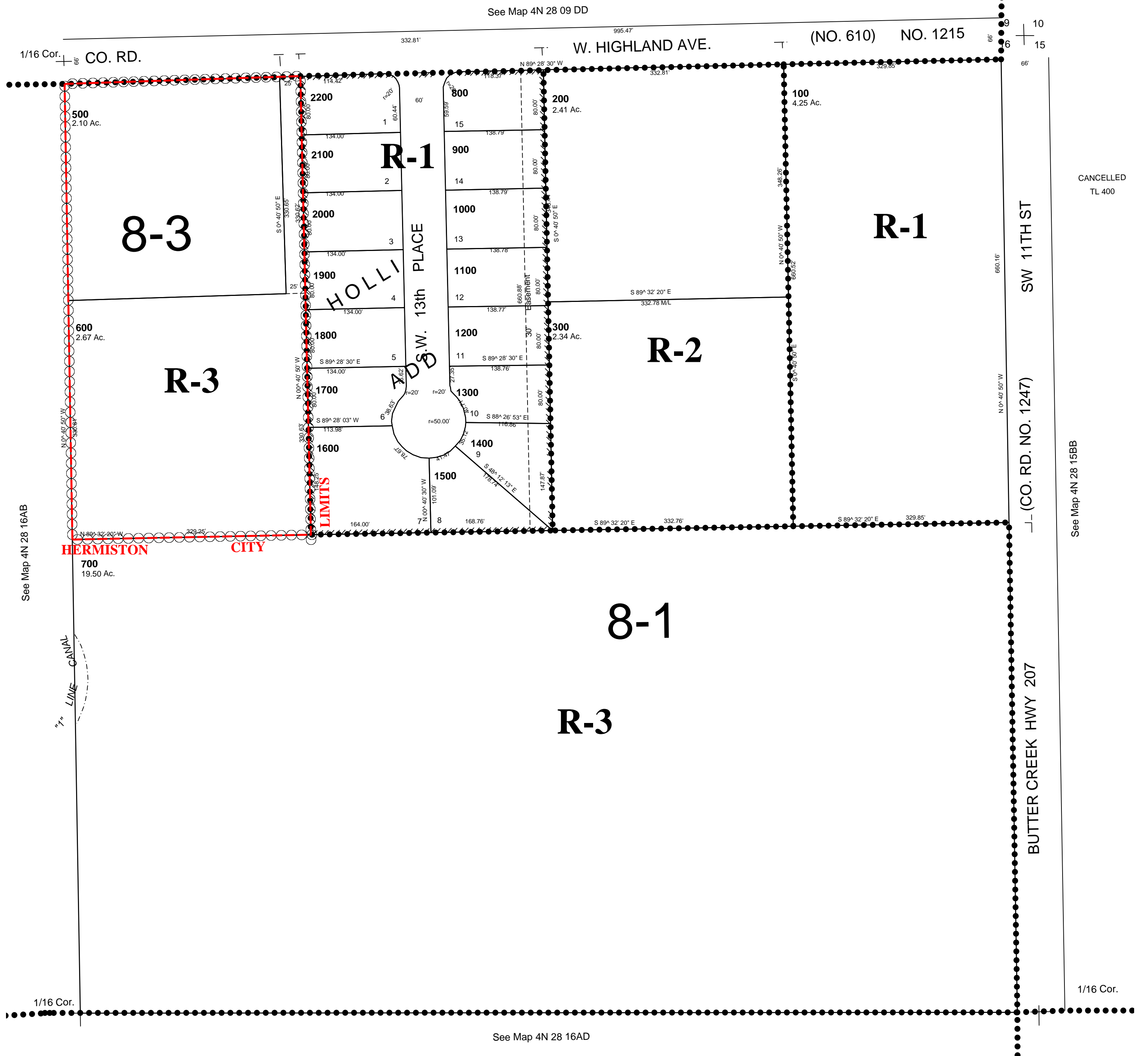
SCALE 1"=100'

4/4/06

4N 28 16AA

AERIAL PHOTO NO. 2P-24

Hermiston City & Urban Growth Area
All in Hermiston Airport Hazard Overlay Zone
All in Stage Gulch Critical Ground Water Area



CANCELLED
TL 400

See Map 4N 28 15BB

4N 28 16AA