

This map was prepared for assessment purposes

NE1/4 SE1/4 SEC 15 T4N R28E WM

9/14/06

4N 28 15DA

UMATILLA COUNTY

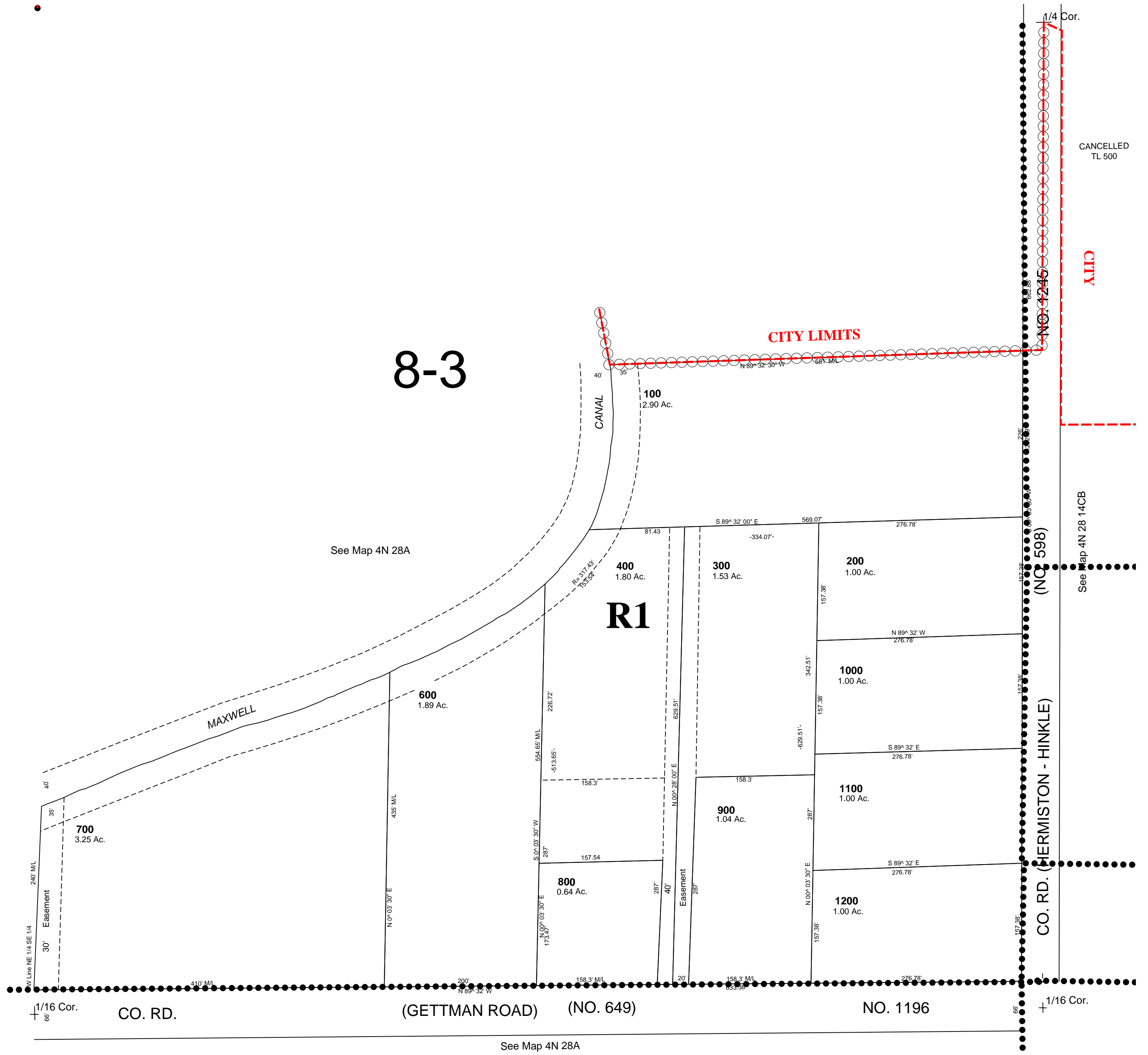
AERIAL PHOTO NO. 2P-22

SCALE 1"=100'

HERMISTON URBAN GROWTH AREA

All in Stage Gulch Critical Ground Water Area

All in AH-H overlay zone



4N 28 15DA