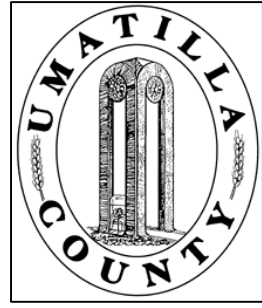


This map was prepared for Assessment & Taxation purposes only and was NOT prepared nor is it suitable for legal, engineering or surveying purposes.

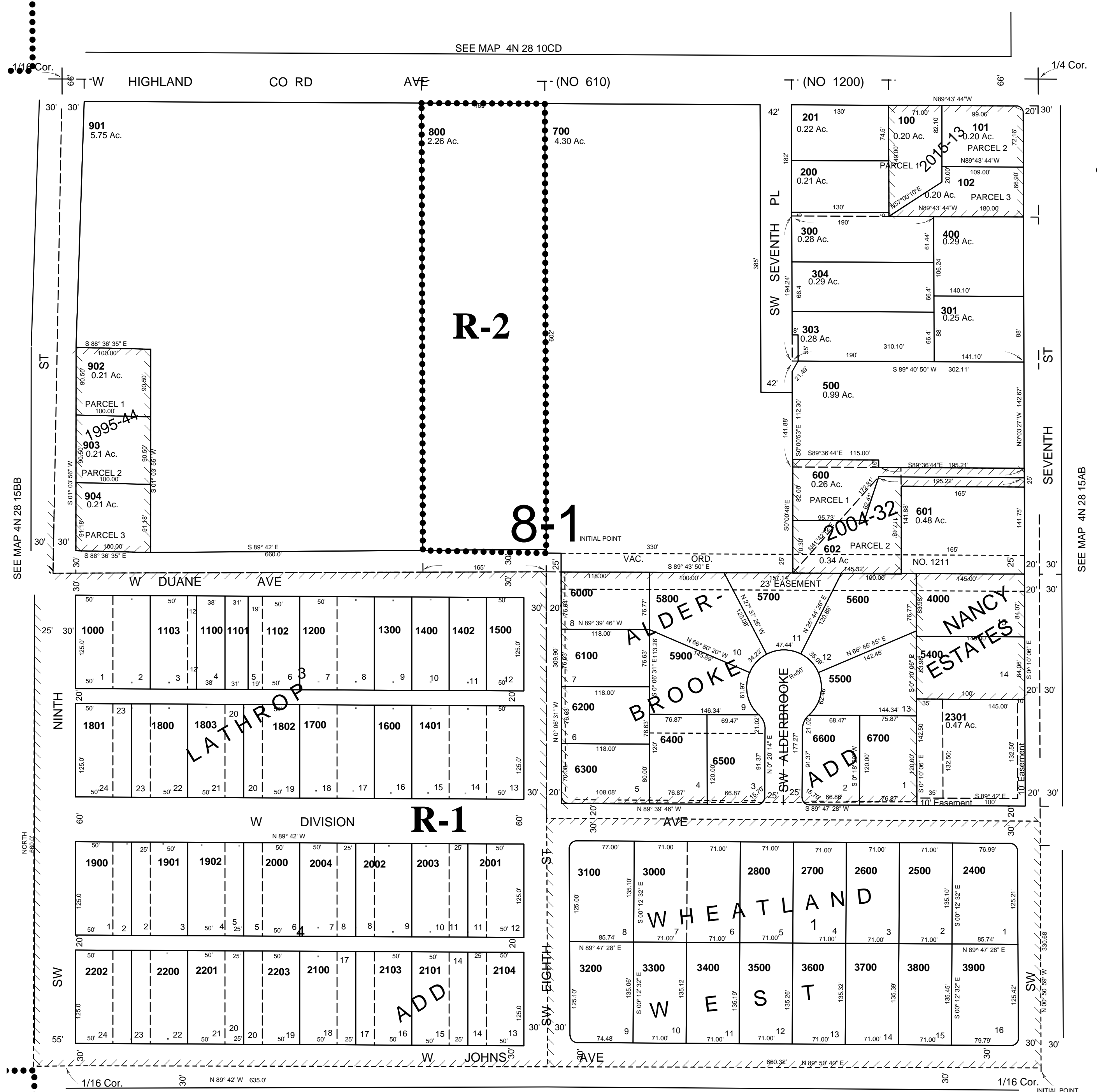


NE1/4 NW1/4 SEC 15 T4N R28E WM UMATILLA COUNTY, OR

SCALE: 1" = 100'

4N 28 15BA

AERIAL PHOTO NO. NZ-2P-23
CITY OF HERMISTON



- CANCELLED
- TL 900
 - 701
 - 101
 - 302
 - 501
 - 2303
 - 202
 - 2300
 - 2102
 - 1903
 - 401
 - 305
 - 2305
 - 4100
 - thru
 - 5300
 - 2900
 - 502
 - 2304
 - 2302
 - 503

SEE MAP 4N 28 15BB

SEE MAP 4N 28 15AB

SEE MAP 4N 28A

Revised: 2/10/10

4N 28 15BA