

This map was prepared for assessment purposes

SCALE 1"=100'

SE1/4 NE1/4 T4N R28E WM UMATILLA COUNTY

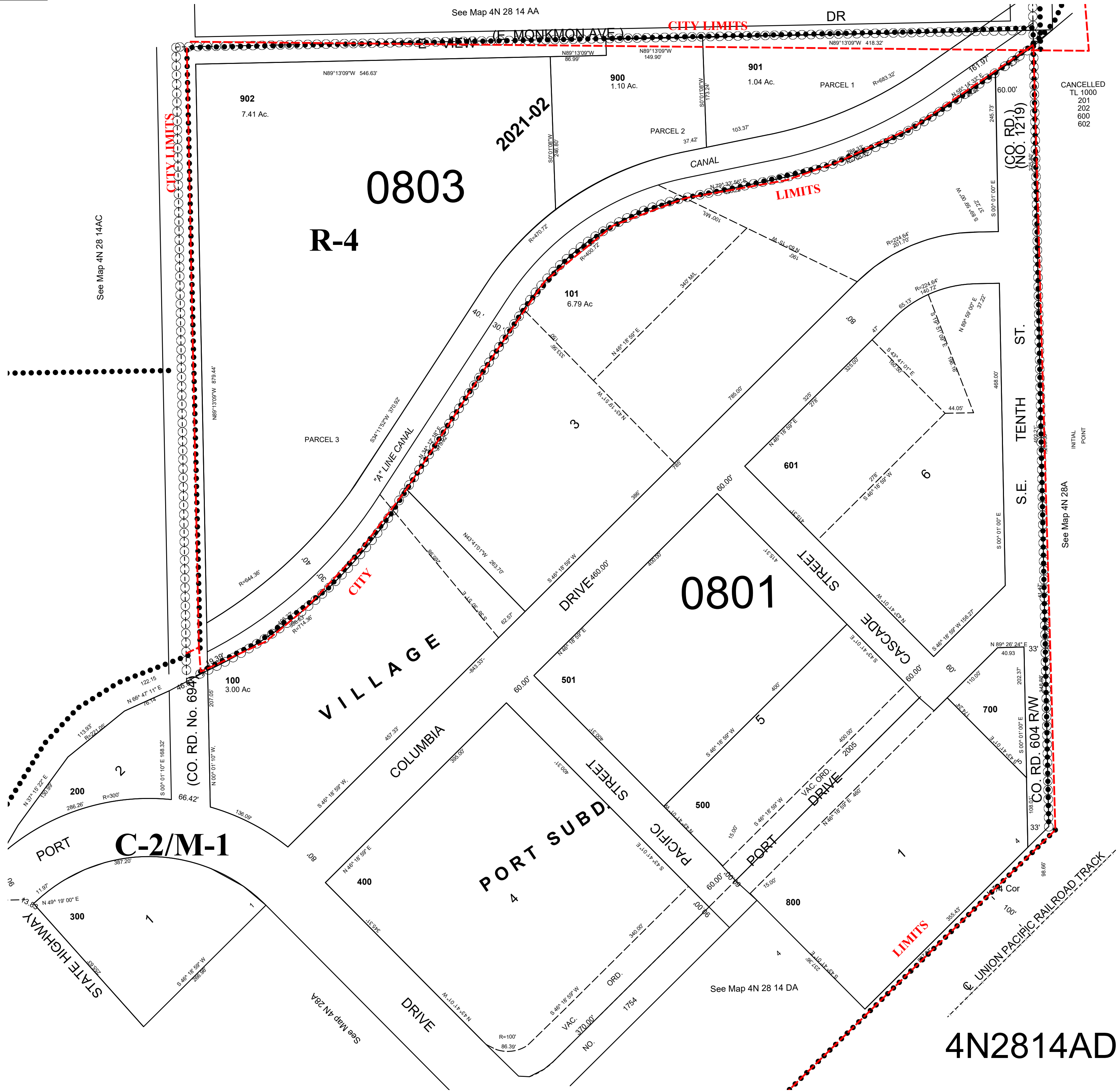
2/9/21

4N 28 14AD

AERIAL PHOTO NO. 2P-22

HERMISTON CITY LIMITS & URBAN GROWTH AREA

See Map 4N 28 14 AA



CANCELLED
TL 1000
201
202
600
602

INITIAL POINT

See Map 4N 28A

See Map 4N 28 14 DA

4N2814AD