

This map was prepared for assessment purposes

# NW 1/4 SEC 12 T4N R28E WM UMATILLA COUNTY

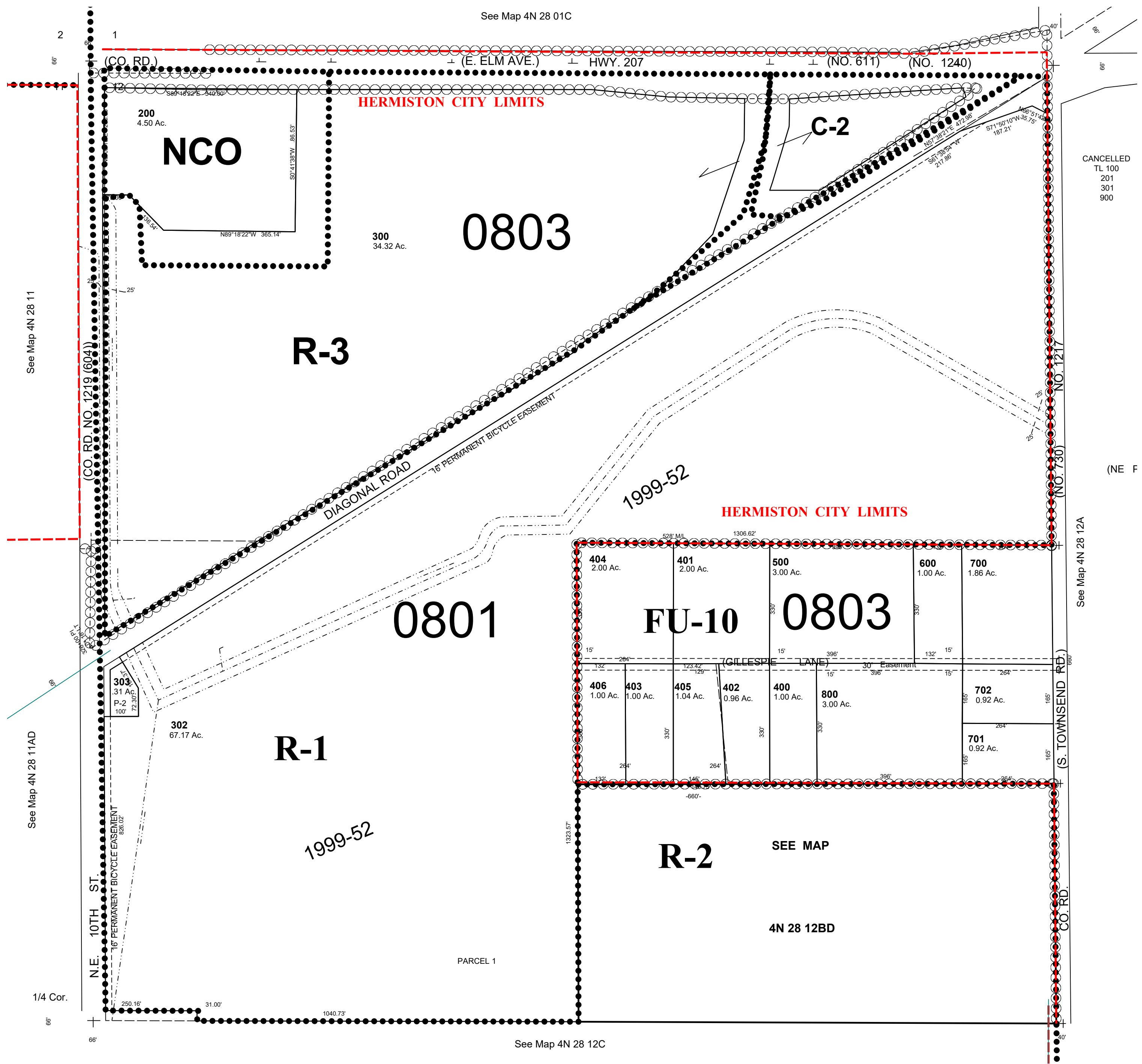
SCALE 1"=200'

4/1/20

## 4N 28 12B

AERIAL PHOTO NO. NZ 1P-125  
HERMISTON URBAN GROWTH AREA

All in Stage Gulch Critical Ground Water Area  
All in Hermiston Airport Hazard Zone



## 4N 28 12B