

This map was prepared for Assessment & Taxation purposes only and was NOT prepared nor is it suitable for legal, engineering or surveying purposes.

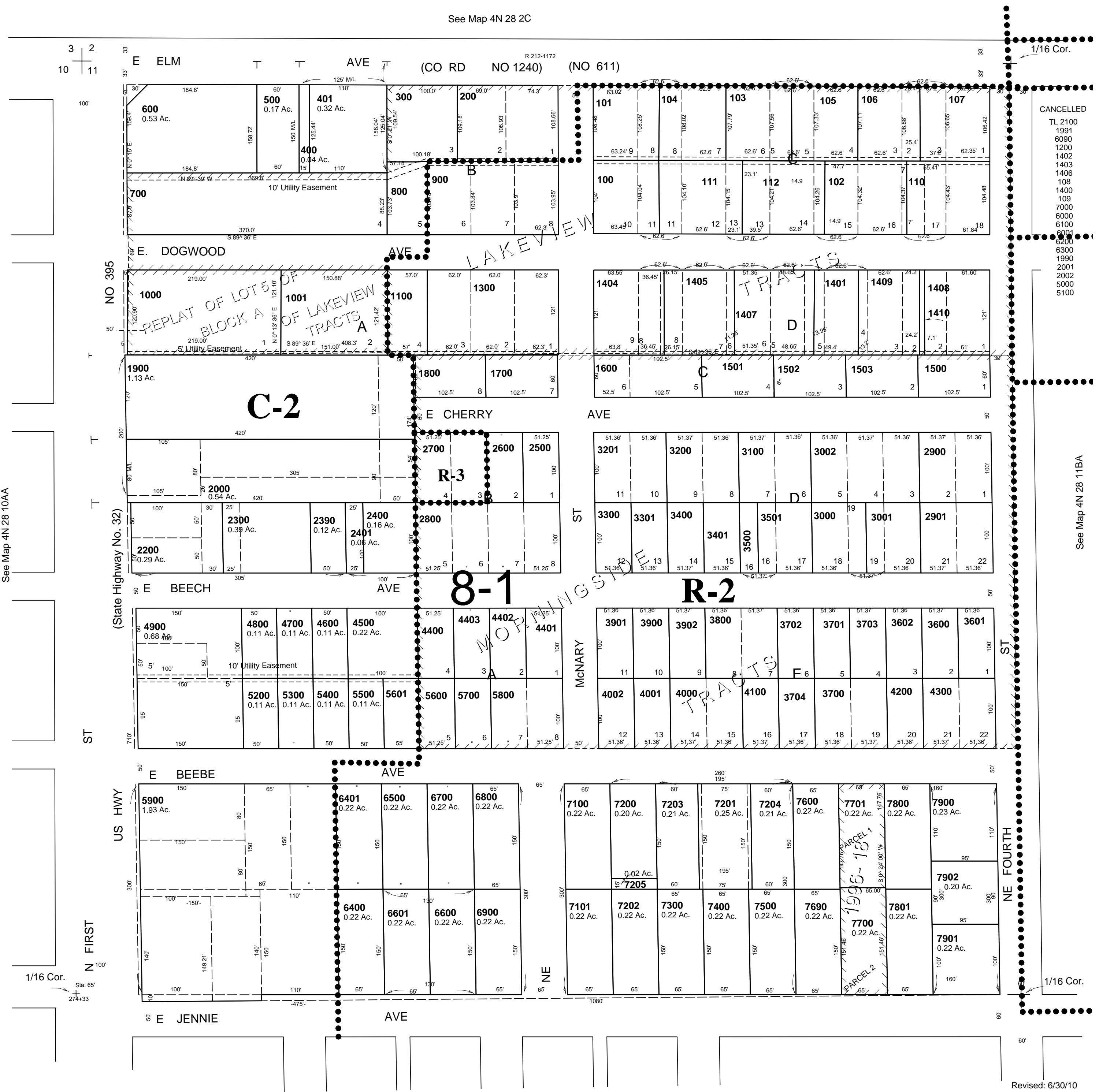
NW1/4 NW1/4 SEC 11 T4N R28E WM UMATILLA COUNTY

SCALE 1"=100'

4N 28 11BB

AERIAL PHOTO NO. NZ 1P-123
CITY OF HERMISTON

See Map 4N 28 2C



See Map 4N 28 11BC

Revised: 6/30/10

4N 28 11BB