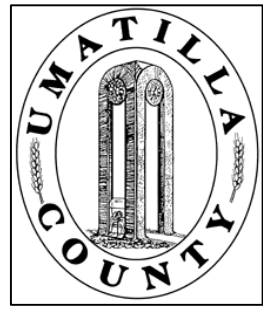


This map was prepared for Assessment & Taxation purposes only and was NOT prepared nor is it suitable for legal, engineering or surveying purposes.



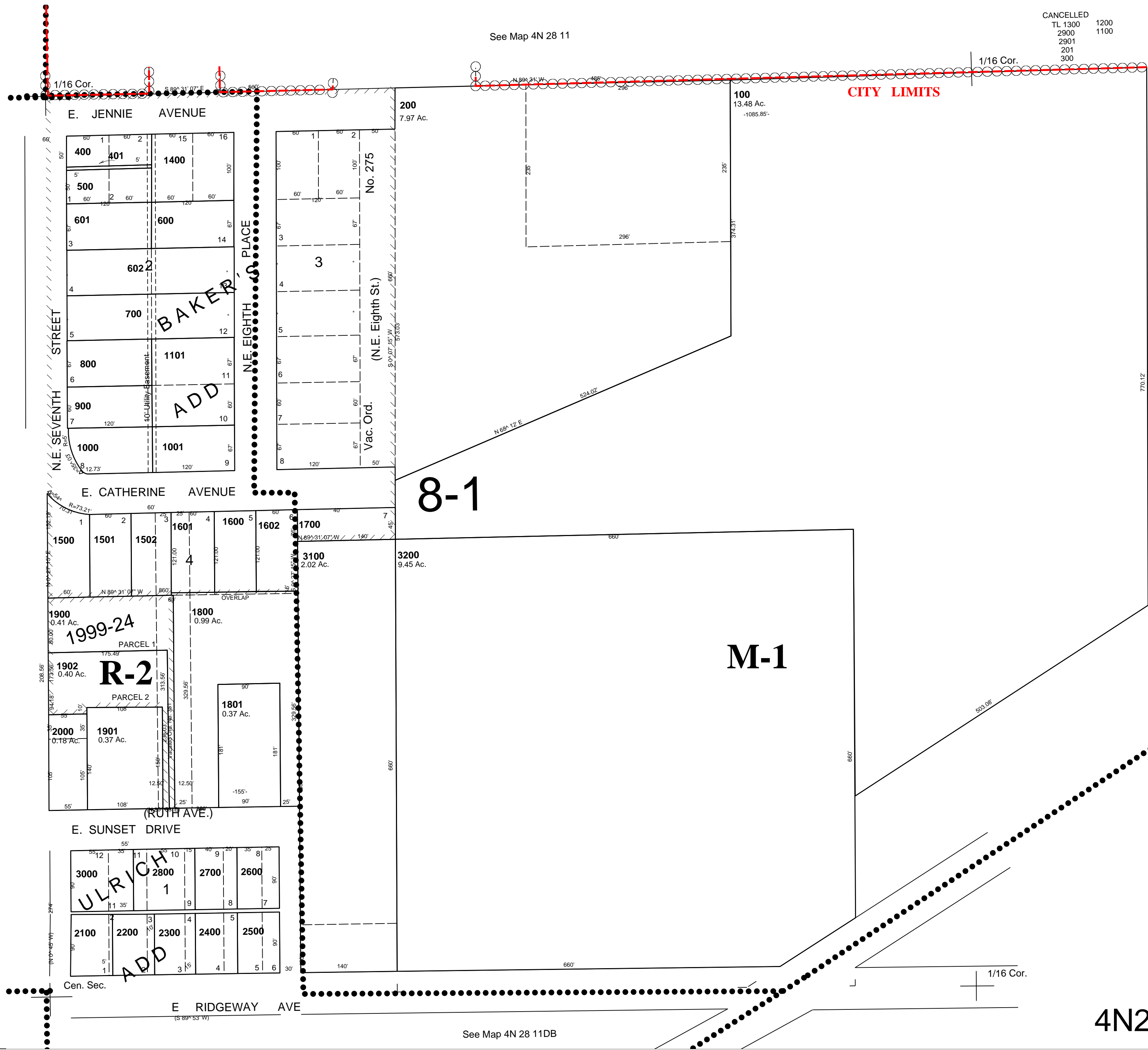
SW1/4 NE1/4 SEC 11 T 4N R 28 E WM
UMATILLA COUNTY

SCALE: 1" = 100'

4N2811AC

AERIAL PHOTO NO NZ 1P-123

CITY OF HERMISTON



See Map 4N 28 11AD

3/4/08

4N2811AC