

This map was prepared for Assessment & Taxation purposes only and was NOT prepared nor is it suitable for legal, engineering or surveying purposes.

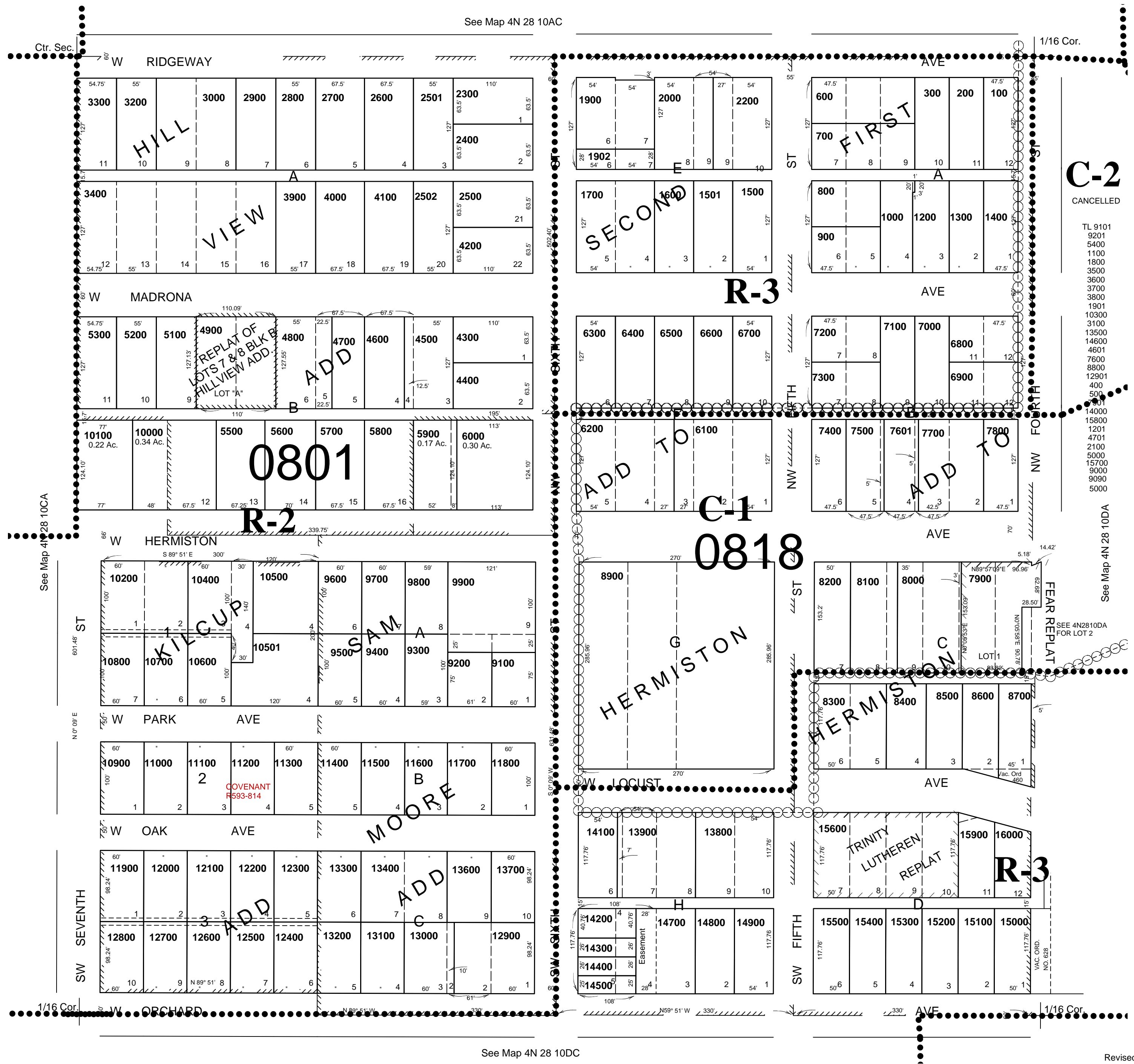
NW1/4 SE1/4 SEC 10 T4N R28E WM UMATILLA COUNTY

4N 28 10DB

AERIAL PHOTO NO, NZ 1P-123

CITY OF HERMISTON

SCALE 1"=100'



Revised: 11/4/10

4N 28 10DB