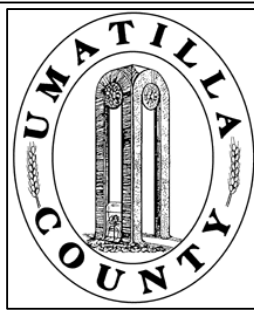


This map was prepared for Assessment purposes only.



SE1/4 SEC 4 T 4N R 28 E WM UMATILLA COUNTY, OR

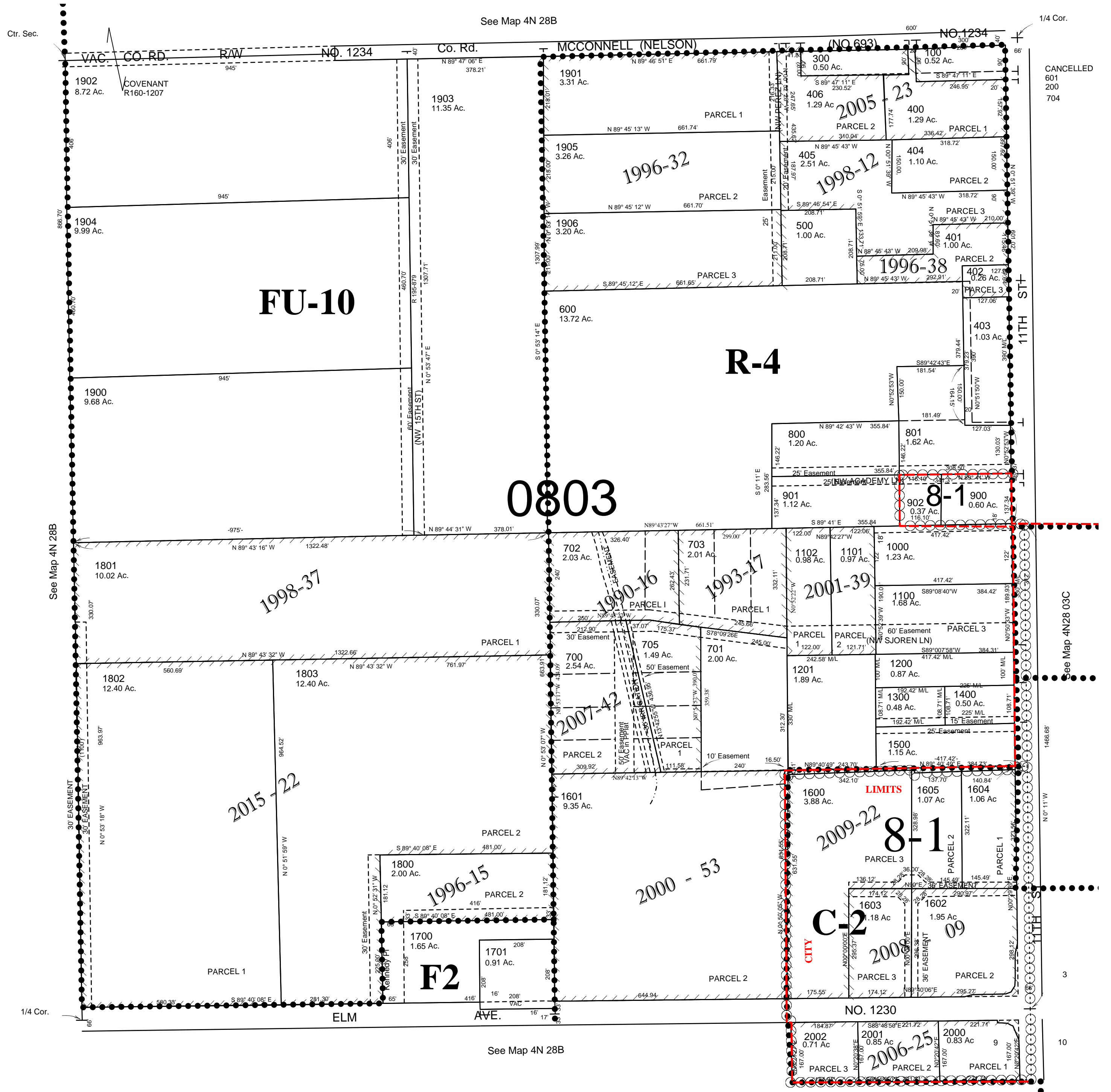
SCALE: 1" = 200'

08/21/03

4N2804D

Hermiston City & Urban Growth Area

All in Butter Creek Critical Ground Water Area



CANCELLED
601
200
704

See Map 4N28 03C

4N2804D