

This map was prepared for assessment purposes

# NE1/4 NE1/4 SEC 3 T4N R28E WM UMATILLA COUNTY

8-9-05

## 4N 28 03AA

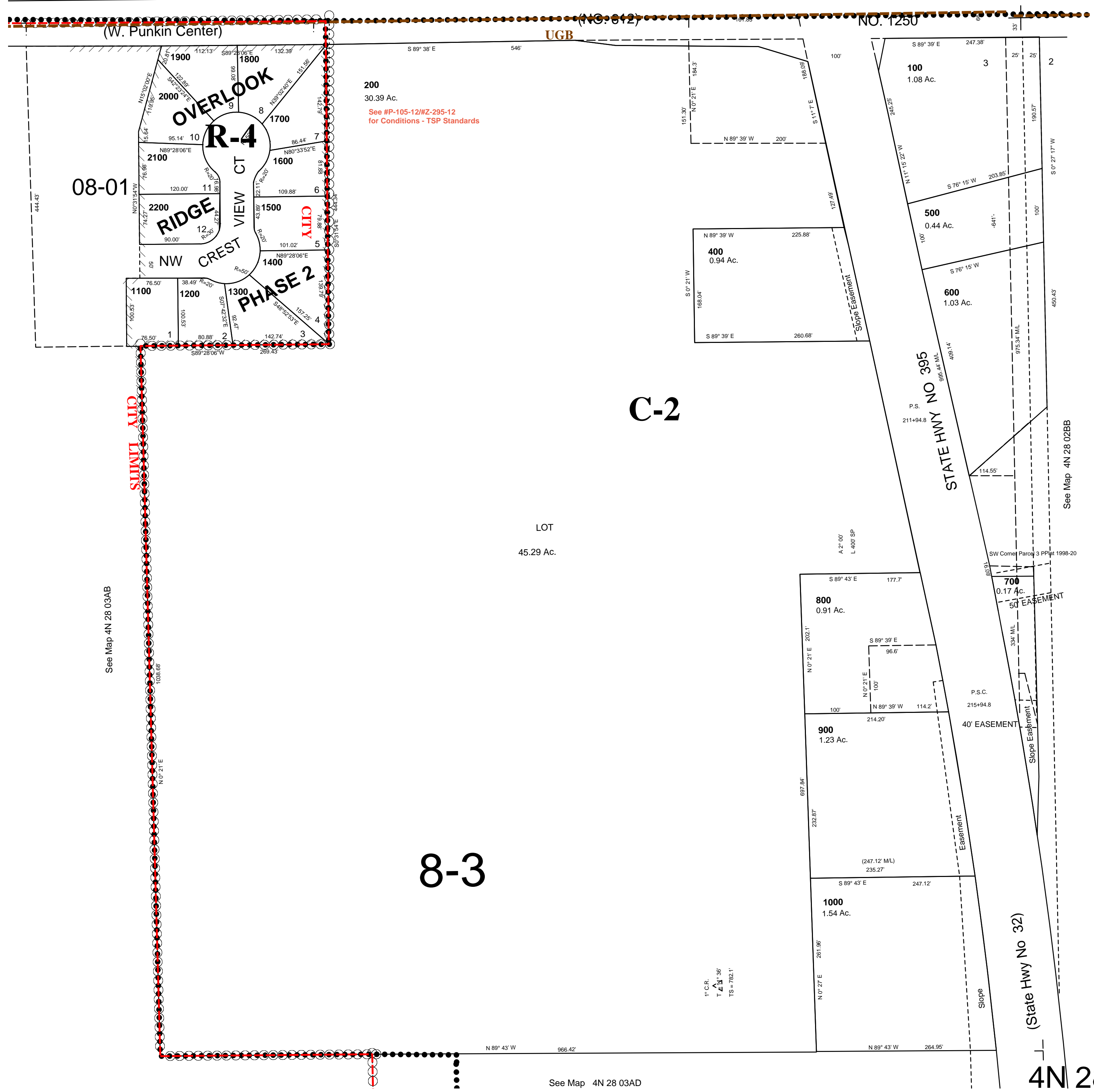
Hermiston City & Urban Growth Area

1" = 100'

See Map 5N 28 34D

34

35



See Map 4N 28 03AB

See Map 4N 28 03AD

See Map 4N 28 02BB

## 4N 28 03AA