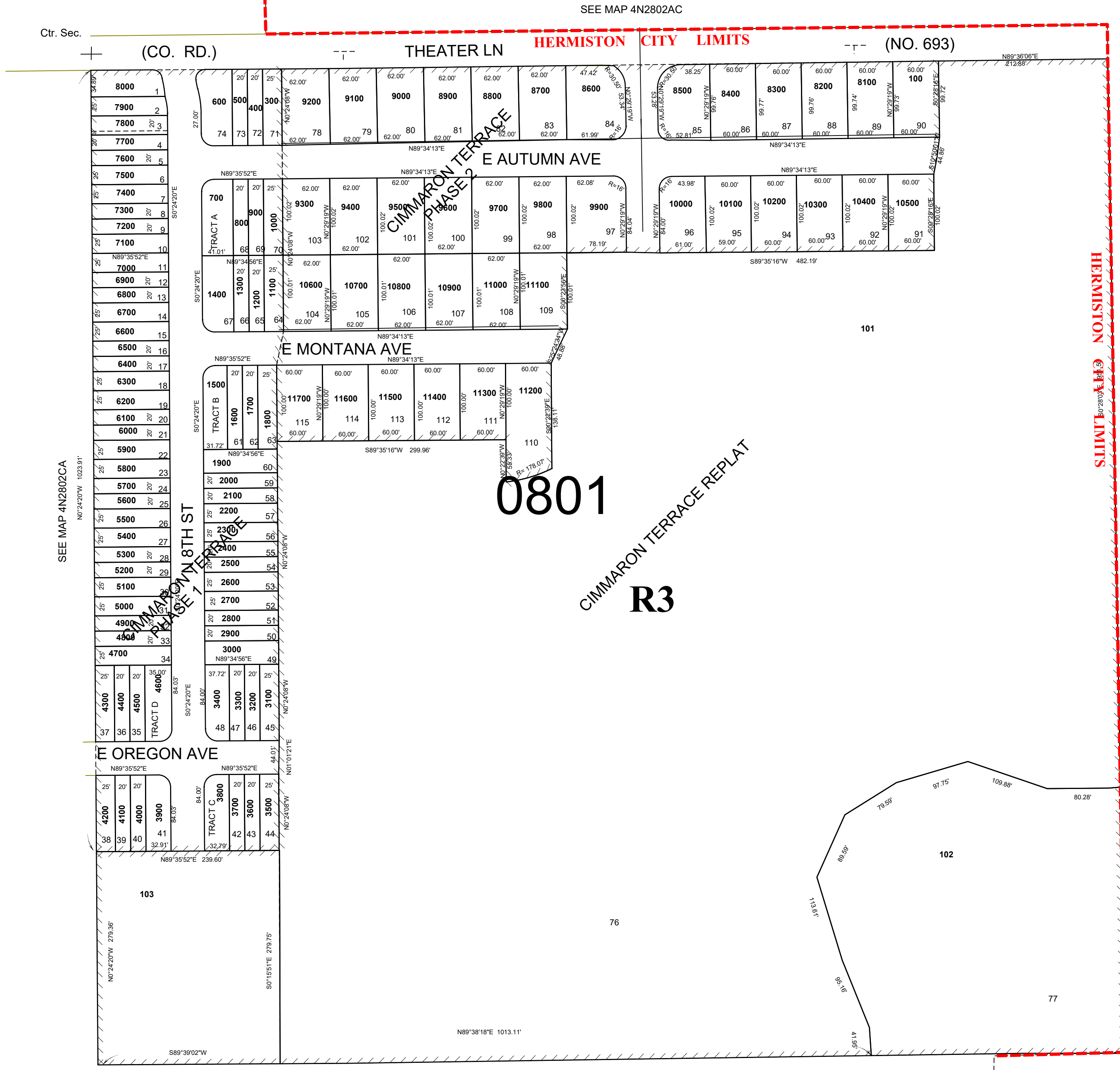


This map was prepared for Assessment & Taxation purposes only and has not been prepared or is it suitable for legal, engineering or surveying purposes.

NW 1/4 SE 1/4 T4 N R28 E WM UMATILLA COUNTY SCALE 1"=100'

4N2802DB CITY OF HERMISTON



SEE MAP 4N2802CA

SEE MAP 4N2802D

SEE MAP 4N2802D

REVISED: 07-07-20

4N2802DB