

This map was prepared for assessment purposes

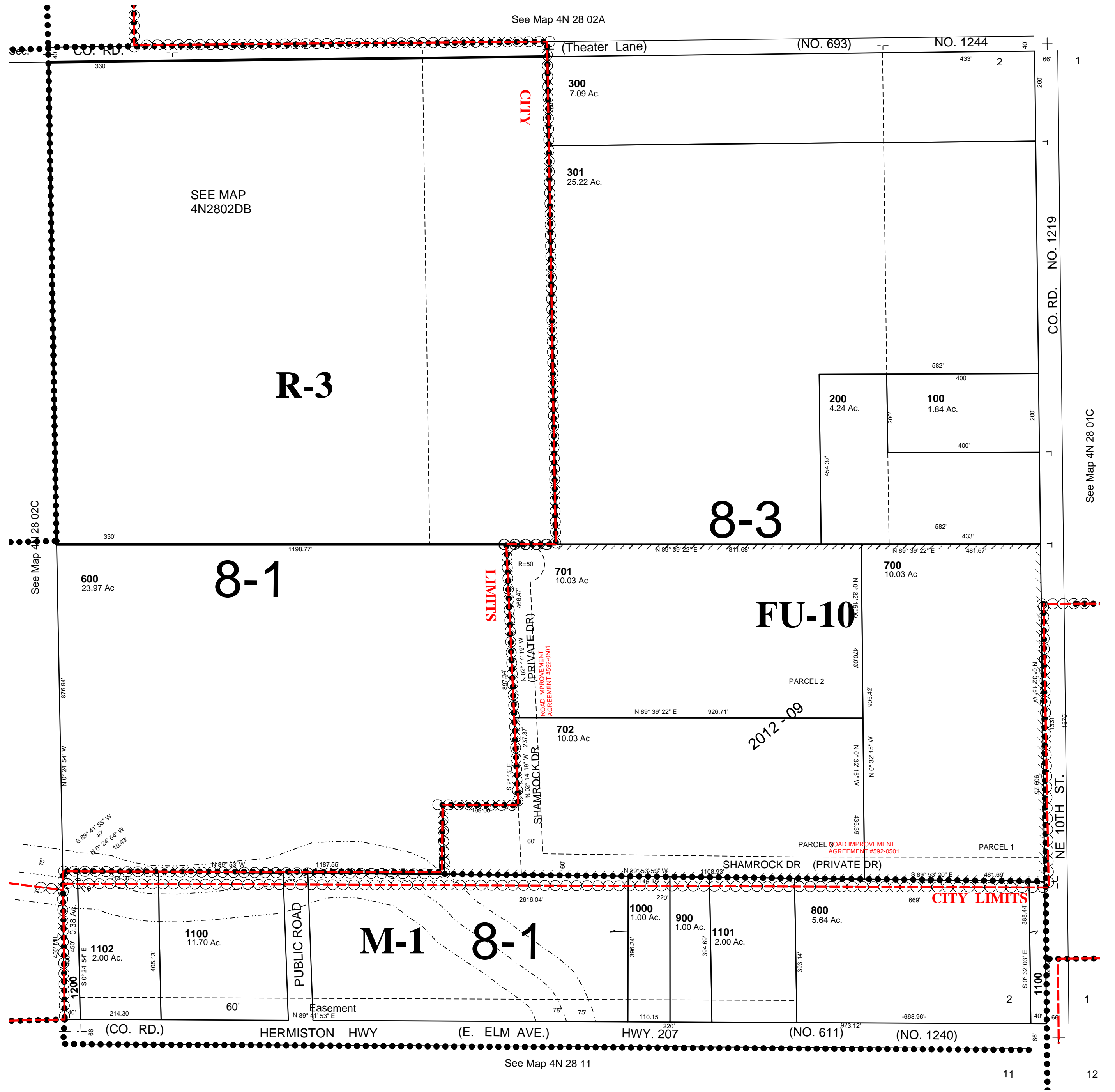
SE1/4 SEC 2 T4N R28E WM
UMATILLA COUNTY
SCALE 1"=200'

03-05-07

4N 28 02D

AERIAL PHOTO NO. 1P-122
HERMISTON CITY & UGA

ALL IN HERMISTON AIRPORT HAZARD ZONE



4N 28 02D