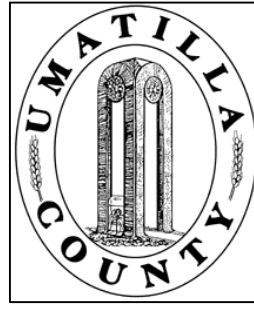


This map was prepared for Assessment & Taxation purposes only and was NOT prepared nor is it suitable for legal, engineering or surveying purposes.



# NE1/4 SW1/4 SEC 02 T4N R28E WM UMATILLA COUNTY, OR

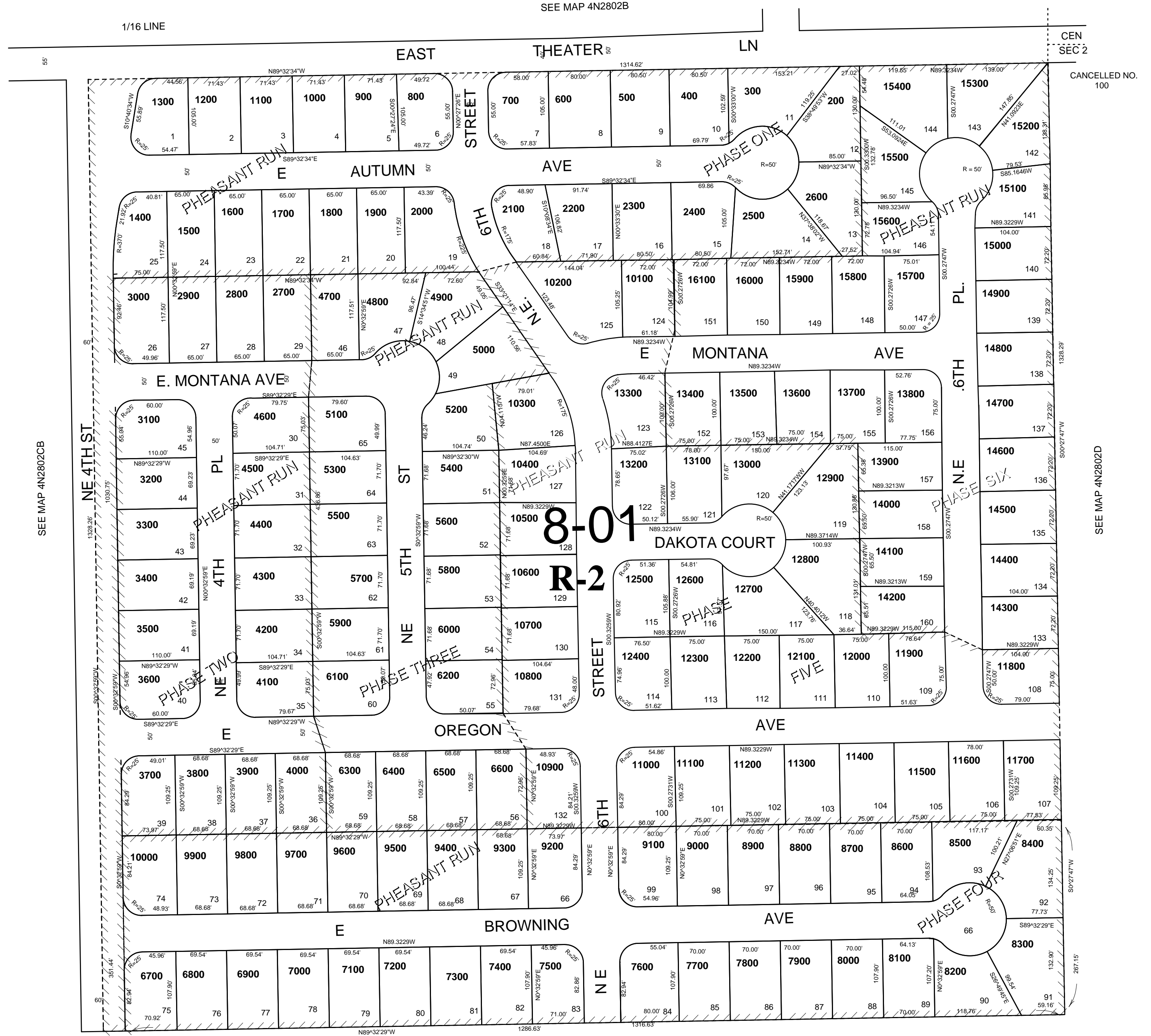
SCALE: 1" = 100'

12/01/04

## 4N2802CA

AERIAL PHOTO NO 1P-122

CITY OF HERMISTON



SEE MAP 4N2802C

## 4N2802CA

SEE MAP 4N2802CB

SEE MAP 4N2802D

CEN  
SEC 2  
CANCELLED NO.  
100