

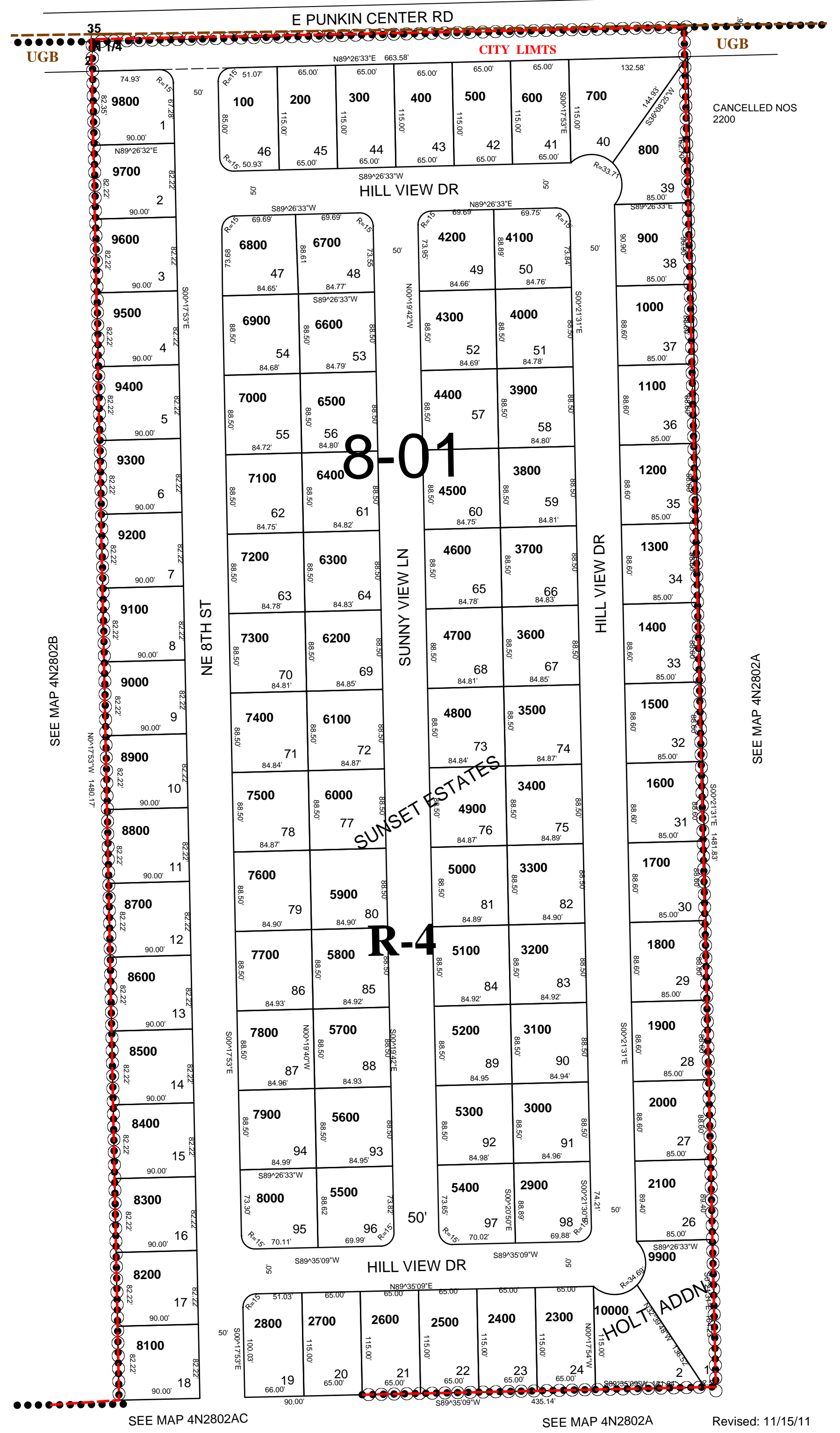
This map was prepared for Assessment & Taxation purposes only and was NOT prepared nor is it suitable for legal, engineering or surveying purposes.

# NW1/4 NE1/4 SEC 2 T4N R28E WM UMATILLA COUNTY

SCALE 1"=100'

4N 28 02AB  
AERIAL PHOTO NO 1P-122  
CITY OF HERMISTON

SEE MAP 5N2835D



4N 28 02AB

Revised: 11/15/11