

This map was prepared for assessment purposes

SW1/4 SE1/4 SEC 4 T3N R34E WM

UMATILLA COUNTY

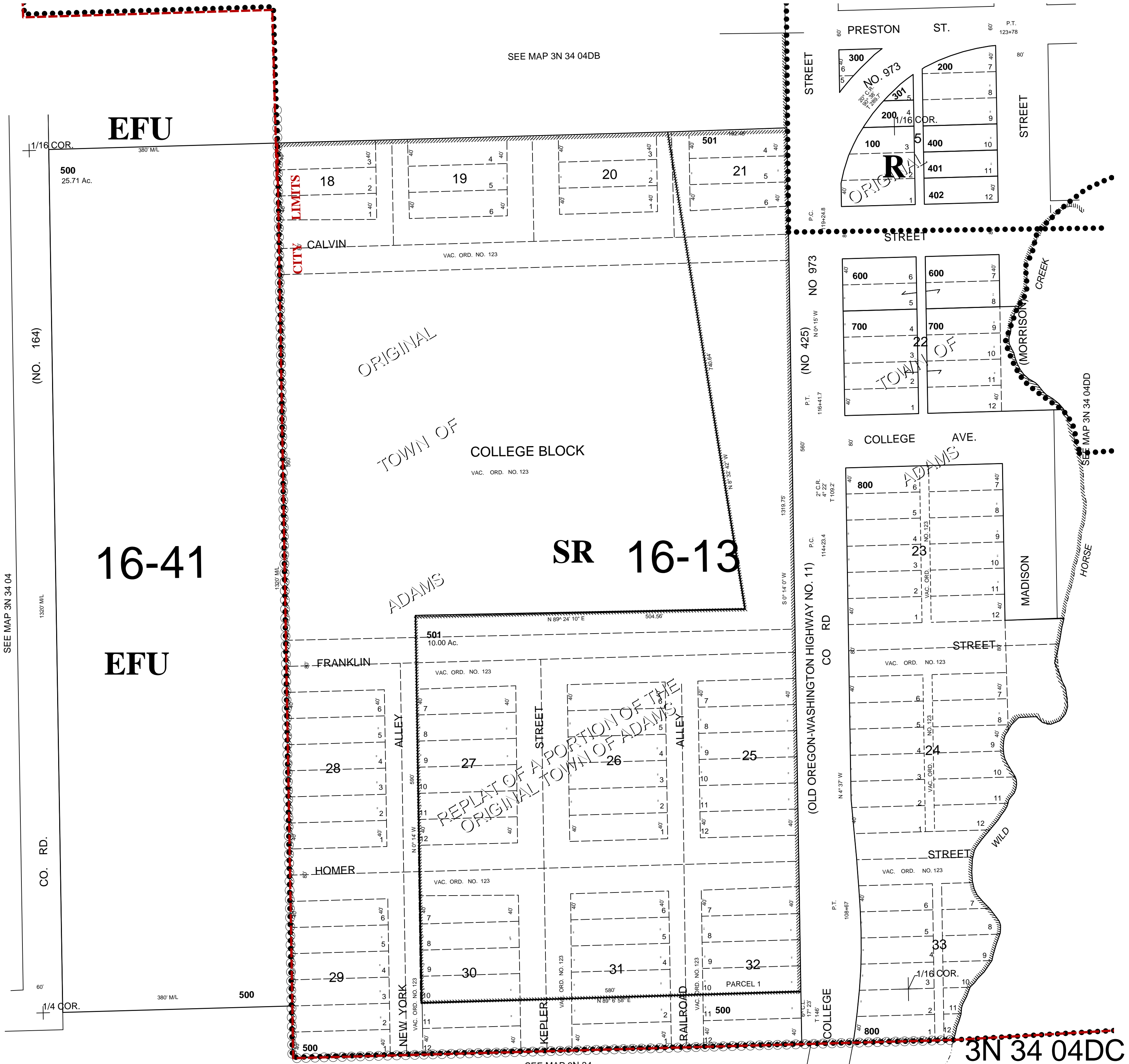
SCALE 1"=100'

3/29/06

3N 34 04DC

AERIAL PHOTO NO. 5P-169

Adams City & Urban Growth Area
See FIRM for areas subject to flooding



500
25.71 Ac.

EFU

(NO. 164)

16-41

EFU

SEE MAP 3N 34 04DB

18 19 20 21

CALVIN VAC. ORD. NO. 123

ORIGINAL TOWN OF COLLEGE BLOCK VAC. ORD. NO. 123

SR 16-13

ADAMS

501 10.00 Ac. VAC. ORD. NO. 123

FRANKLIN VAC. ORD. NO. 123

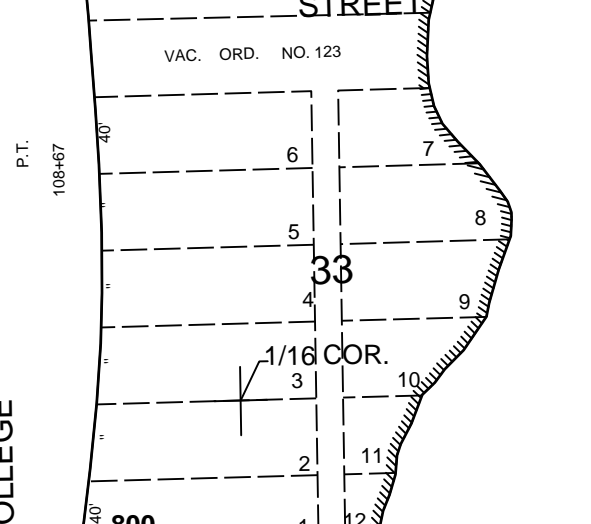
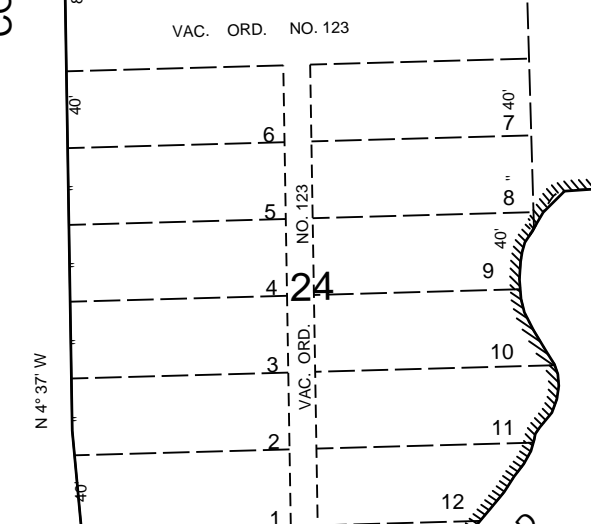
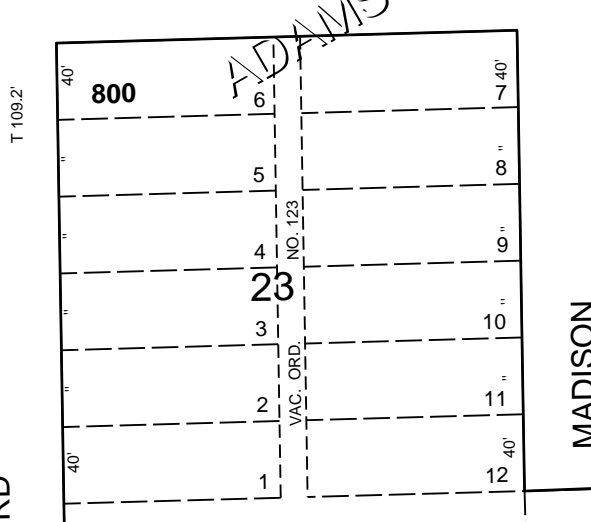
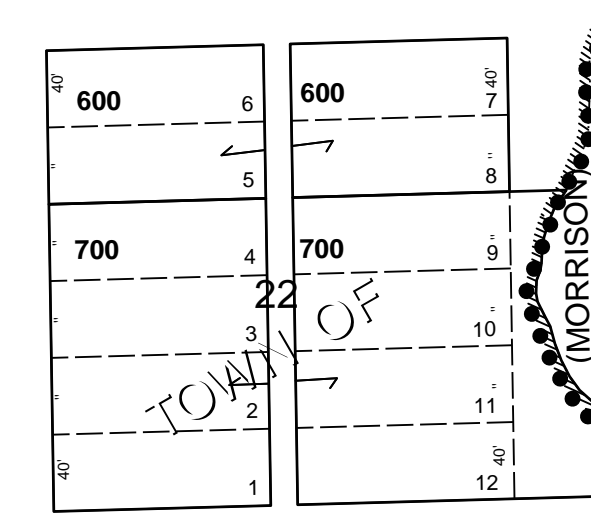
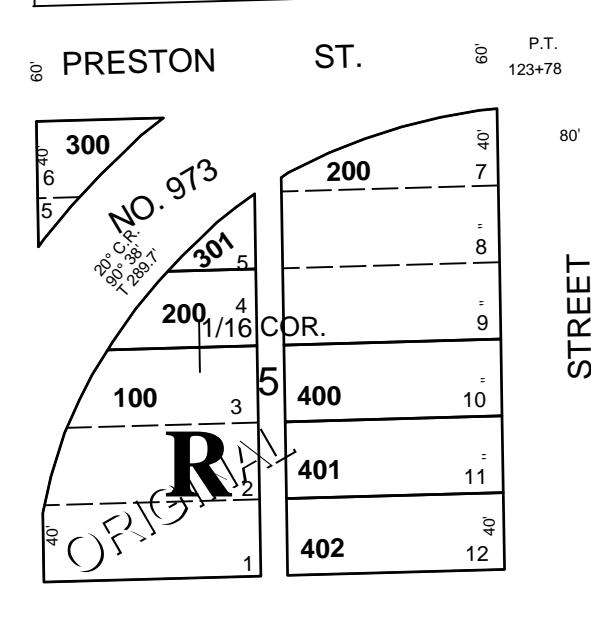
28 27 26 25

HOMER VAC. ORD. NO. 123

29 30 31 32

NEW YORK VAC. ORD. NO. 123 KEPLER VAC. ORD. NO. 123 RAILROAD VAC. ORD. NO. 123

SEE MAP 3N 34



3N 34 04DC